

À des fins de recherche uniquement

Anticorps Polyclonal de lapin anti-MX1



Numéro de catalogue: 13750-1-AP

Phare

83 Publications

Informations de base

Numéro de catalogue: 13750-1-AP	Numéro d'acquisition GenBank: BC032602	Méthode de purification: Purification par affinité contre l'antigène
Taille: 150ul , Concentration: 550 µg/ml by Nanodrop;	Identification du gène (NCBI): 4599	Dilutions recommandées: WB 1:500-1:1000 IHC 1:50-1:500 IF 1:50-1:500
Hôte: Lapin	Nom complet: Myxovirus resistance protein 1	
Isotype: IgG	MW calculé 662 aa, 76 kDa	
Immunogen Catalog Number: AG4692	MW observés: 76 kDa	

Applications

Applications testées:
FC, IF, IHC, IP, WB, ELISA

Demandes citées:
FC, IF, IHC, IP, WB

Spécificité de l'espèce:
Humain, souris

Espèces citées:
canin, Humain, porc, poulet, singe, souris, Hamster, Macaque

Remarque-IHC: il est suggéré de démasquer l'antigène avec un tampon de TE buffer pH 9,0; (*) A défaut, 'le démasquage de l'antigène peut être 'effectué avec un tampon citrate pH 6,0.

Contrôles positifs:

WB : cellules A549, tissu pulmonaire de souris

IHC : tissu d'amygdalite humaine, tissu de cancer du poumon humain

IF : cellules A549,

Informations générales

Mx1 (also known as MxA) is a GTPase that belongs to the Mx family of proteins, which are ubiquitous in eukaryotes and involved in the immune response to viral infections. The human Mx1 is localized in the cytoplasm interfering with the translation of viral proteins, whereas the mouse Mx1 accumulates in the nucleus and inhibits the primary transcription of viral RNA. Mx1 expression is induced by treatment with α/β IFN. This antibody can recognize the endogenous Mx1 protein in several tissues like lung and spleen.

Publications notables

Autrice	Pubmed ID	Journal	Application
Yuki Kurebayashi	34529742	PLoS Pathog	WB,IF
Xiaodan Yang	27527594	J Immunol	WB
Kang An	25357264	J Proteome Res	WB

Stockage

Stockage:

Stocker à -20°C. Stable pendant un an après l'expédition.

Tampon de stockage:

PBS avec azoture de sodium à 0,02 % et glycérol à 50 % pH 7,3

L'aliquotage n'est pas nécessaire pour le stockage à -20C

*** Les 20ul contiennent 0,1% de BSA.

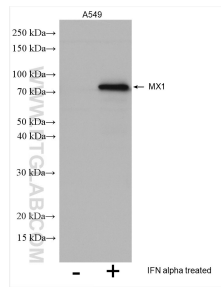
For technical support and original validation data for this product please contact:

T: 1 (888) 4PTGLAB (1-888-478-4522) (toll free in USA), or 1(312) 455-8498 (outside USA)

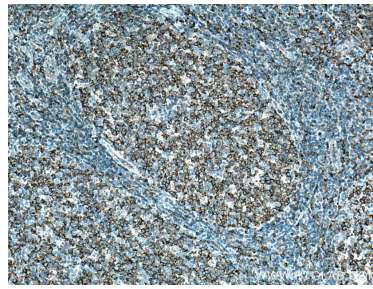
E: proteintech@ptglab.com
W: ptglab.com

This product is exclusively available under Proteintech Group brand and is not available to purchase from any other manufacturer.

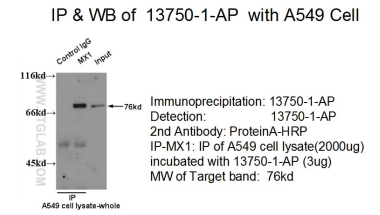
Données de validation sélectionnées



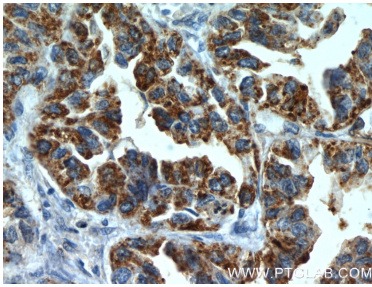
Lysates of A549 cells treated or non-treated with IFN-alpha were subjected to SDS PAGE followed by western blot with 13750-1-AP (MX1 antibody) at dilution of 1:600 incubated at room temperature for 1.5 hours.



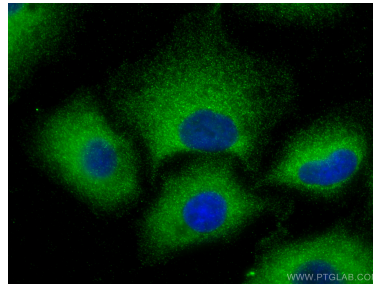
Immunohistochemical analysis of paraffin-embedded human tonsillitis tissue slide using 13750-1-AP (MX1 antibody) at dilution of 1:200 (under 10x Lens). Heat mediated antigen retrieval with Tris-EDTA buffer (pH 9.0).



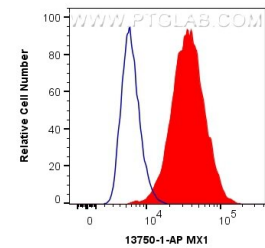
IP result of anti-MX1 (13750-1-AP for IP and Detection) with A549 cell.



Immunohistochemical analysis of paraffin-embedded human lung cancer slide using 13750-1-AP (MX1 Antibody) at dilution of 1:50.



Immunofluorescent analysis of (-20°C Methanol) fixed A549 cells using MX1 antibody (13750-1-AP) at dilution of 1:200 and CoraLite®488-Conjugated AffiniPure Goat Anti-Rabbit IgG(H+L).



1×10^6 A549 cells were intracellularly stained with 0.4 ug Anti-Human MX1 (13750-1-AP) and CoraLite®488-Conjugated AffiniPure Goat Anti-Rabbit IgG(H+L) at dilution 1:1000 (red), or 0.4 ug Isotype Control. Cells were fixed with 4% PFA and permeabilized with Flow Cytometry Perm Buffer (PF00011-C).