

À des fins de recherche uniquement

# Anticorps Polyclonal de lapin anti-RNase T2



Numéro de catalogue: 13753-1-AP

4 Publications

## Informations de base

Numéro de catalogue:

13753-1-AP

Taille:

150ul, Concentration: 150 µg/ml by Nanodrop and 133 µg/ml by Bradford method using BSA as the standard;

Hôte:

Lapin

Isotype:

IgG

Immunogen Catalog Number:

AG4695

Numéro d'acquisition GenBank:

BC039713

Identification du gène (NCBI):

8635

Nom complet:

ribonuclease T2

MW calculé

256 aa, 29 kDa

MW observés:

29 kDa

Méthode de purification:

Purification par affinité contre l'antigène

Dilutions recommandées:

IP 0.5-4.0 ug for IP and 1:200-1:1000 for WB

IHC 1:20-1:200

IF 1:20-1:200

## Applications

Applications testées:

IF, IHC, IP, ELISA

Demandes citées:

IHC

Spécificité de l'espèce:

Humain, souris

Espèces citées:

Humain, souris

**Remarque-IHC: il est suggéré de démasquer l'antigène avec un tampon de TE buffer pH 9,0; (\*) À défaut, 'le démasquage de l'antigène peut être 'effectué avec un tampon citrate pH 6,0.**

Contrôles positifs:

IP: cellules BxPC-3,

IHC: tissu de cancer du pancréas humain,

IF: cellules transfectées,

## Informations générales

RNASET2(Ribonuclease T2) is also named as RNASE6PL(Ribonuclease 6) and belongs to the RNase T2 family. It is a unique member of the growing family of tumor-antagonizing genes and behaves as a class II tumor suppressor and abolish the tumorigenic potential of an ovarian cancer-derived cell line. This protein has 2 isoforms produced by alternative splicing. Both mildly glycosylated (ranging from 38 to 45 kDa) and highly glycosylated forms (ranging from 50 to 80 kDa) of human tumor suppressor protein RNASET2 can be detected in immunoblotting in P. Pastoris(PMID: 21446958).

## Publications notables

Autrice	Pubmed ID	Journal	Application
Stefan Schorr	32133789	FEBS J	WB
Juanjuan Ou	30842415	Nat Commun	WB
Mi Tian	33626918	Cell Transplant	WB,IHC

## Stockage

Stockage:

Stocker à -20°C. Stable pendant un an après l'expédition.

Tampon de stockage:

PBS avec azoture de sodium à 0,02 % et glycérol à 50 % pH 7,3

L'aliquotage n'est pas nécessaire pour le stockage à -20C

\*\*\* Les 20ul contiennent 0,1% de BSA.

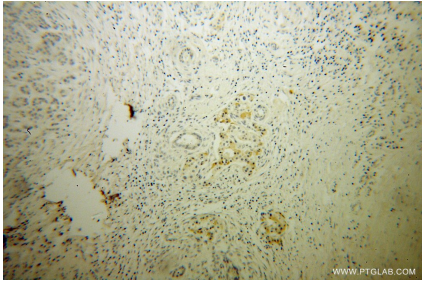
For technical support and original validation data for this product please contact:

T: 1 (888) 4PTGLAB (1-888-478-4522) (toll free in USA), or 1(312) 455-8498 (outside USA)

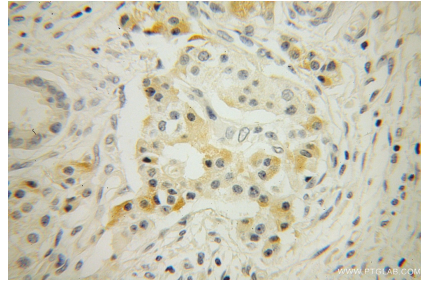
E: proteintech@ptglab.com  
W: ptglab.com

This product is exclusively available under Proteintech Group brand and is not available to purchase from any other manufacturer.

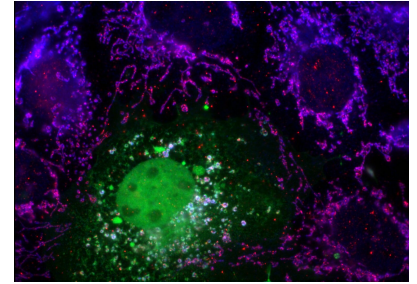
## Données de validation sélectionnées



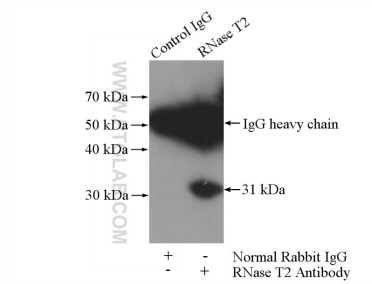
Immunohistochemical analysis of paraffin-embedded human pancreas cancer using 13753-1-AP (RNase T2 antibody) at dilution of 1:100 (under 10x lens).



Immunohistochemical analysis of paraffin-embedded human pancreas cancer using 13753-1-AP (RNase T2 antibody) at dilution of 1:100 (under 40x lens).



IF result of 13753-1-AP (anti-RNASET2) in COS7 cell by Dr. Nancy Kedersha. COS7 cells transiently transfected with FAST-KD4-YFP, counterstained with PTG RNASET2 antibody (red) and human anti-mitochondrial antigen in blue. Note that FAST-KD4-YFP overexpression alters mitochondrial morphology, and is also present at stress granules (green only).



IP Result of anti-RNase T2 (IP:13753-1-AP, 4ug; Detection:13753-1-AP 1:300) with BxPC-3 cells lysate 4000ug.