

À des fins de recherche uniquement

# Anticorps Polyclonal de lapin anti-GPRIN1



Numéro de catalogue: 13771-1-AP

Phare

3 Publications

## Informations de base

Numéro de catalogue:  
13771-1-AP

Taille:  
150ul, Concentration: 650 µg/ml by Nanodrop and 333 µg/ml by Bradford method using BSA as the standard;

Hôte:  
Lapin

Isotype:  
IgG

Immunogen Catalog Number:  
AG4754

Numéro d'acquisition GenBank:  
BC052950

Identification du gène (NCBI):  
114787

Nom complet:  
G protein regulated inducer of neurite outgrowth 1

MW calculé:  
1008 aa, 102 kDa

MW observés:  
100-110 kDa

Méthode de purification:  
Purification par affinité contre l'antigène

Dilutions recommandées:  
WB 1:500-1:1000  
IP 0.5-4.0 ug for IP and 1:500-1:1000 for WB

## Applications

Applications testées:  
IP, WB, ELISA

Demandes citées:  
IF, IHC, WB

Spécificité de l'espèce:  
Humain, souris

Espèces citées:  
Humain, souris

Contrôles positifs:

WB : tissu cérébral de souris,

IP : tissu cérébral de souris,

## Informations générales

GPRIN1 (G protein-regulated inducer of neurite outgrowth 1), also named GRIN1, may be involved in neurite outgrowth. Western blotting analysis has confirmed its expression in mouse neuroblastoma and rat pheochromocytoma cells. And both GPRIN1 and GNAO1 are membrane-bound proteins that are enriched in the growth cones of neurites (PMID:10480904). It has 2 isoforms produced by alternative splicing. This antibody detects GRIN1 at bands around 110 kDa.

## Publications notables

Autrice	Pubmed ID	Journal	Application
Hongbo Wang	29581737	Exp Ther Med	WB
Camille N Pujol	32047117	Sci Signal	WB,IHC,IF
Li Yi Y	20178993	J Biol Chem	WB

## Stockage

Stockage:

Stocker à -20°C. Stable pendant un an après l'expédition.

Tampon de stockage:

PBS avec azoture de sodium à 0,02 % et glycérol à 50 % pH 7,3

L'aliquotage n'est pas nécessaire pour le stockage à -20C

\*\*\* Les 20ul contiennent 0,1% de BSA.

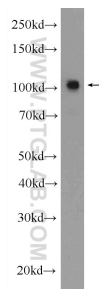
For technical support and original validation data for this product please contact:

T: 1 (888) 4PTGLAB (1-888-478-4522) (toll free in USA), or 1(312) 455-8498 (outside USA)

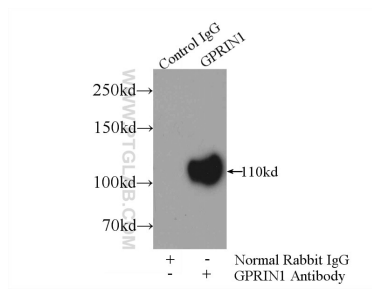
E: proteintech@ptglab.com  
W: ptglab.com

This product is exclusively available under Proteintech Group brand and is not available to purchase from any other manufacturer.

## Données de validation sélectionnées



mouse brain tissue were subjected to SDS PAGE followed by western blot with 13771-1-AP (GPRIN1 antibody at dilution of 1:600 incubated at room temperature for 1.5 hours.



IP Result of anti-GPRIN1 (IP:13771-1-AP, 3ug; Detection:13771-1-AP 1:500) with mouse brain tissue lysate 3600ug.