

À des fins de recherche uniquement

# Anticorps Polyclonal de lapin anti-PDE1C



Numéro de catalogue: 13785-1-AP

2 Publications

## Informations de base

Numéro de catalogue:  
13785-1-AP

Taille:  
150ul, Concentration: 350 µg/ml by Nanodrop and 207 µg/ml by Bradford method using BSA as the standard;

Hôte:  
Lapin

Isotype:  
IgG

Immunogen Catalog Number:  
AG4798

Numéro d'acquisition GenBank:  
BC022525

Identification du gène (NCBI):  
5137

Nom complet:  
phosphodiesterase 1C, calmodulin-dependent 70kDa

MW calculé:  
634 aa, 72 kDa

MW observés:  
68 kDa

Méthode de purification:  
Purification par affinité contre l'antigène

Dilutions recommandées:  
WB 1:500-1:2000  
IP 0.5-4.0 ug for IP and 1:500-1:1000 for WB

## Applications

Applications testées:  
IP, WB, ELISA

Demandes citées:  
WB

Spécificité de l'espèce:  
Humain, rat, souris

Espèces citées:  
rat, souris

Contrôles positifs:

WB : tissu cardiaque humain,

IP : tissu cardiaque de souris,

## Informations générales

Cyclic nucleotide phosphodiesterases (PDEs) catalyze hydrolysis of the cyclic nucleotides cAMP and cGMP to the corresponding nucleoside 5-prime-monophosphates. PDE1C, is calmodulin-dependent PDEs (CaM-PDEs) that are stimulated by a calcium-calmodulin complex. Expression of PDE1C may be an important component in signal transduction pathways mediated by calcium that permit cell cycle traverse and proliferation (PMID:9366577). It has 2 isoforms produced by alternative splicing.

## Publications notables

Autrice	Pubmed ID	Journal	Application
Makoto Ando	28870522	Free Radic Biol Med	WB
Mehdi Eshraghi	32426479	Sci Adv	WB

## Stockage

Stockage:

Stocker à -20°C. Stable pendant un an après l'expédition.

Tampon de stockage:

PBS avec azoture de sodium à 0,02 % et glycérol à 50 % pH 7,3

L'aliquotage n'est pas nécessaire pour le stockage à -20C

\*\*\* Les 20ul contiennent 0,1% de BSA.

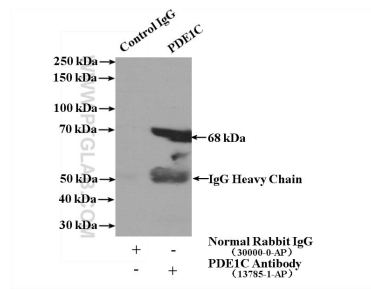
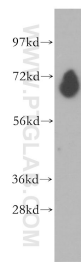
For technical support and original validation data for this product please contact:

T: 1 (888) 4PTGLAB (1-888-478-4522) (toll free in USA), or 1(312) 455-8498 (outside USA)

E: proteintech@ptglab.com  
W: ptglab.com

This product is exclusively available under Proteintech Group brand and is not available to purchase from any other manufacturer.

## Données de validation sélectionnées



human heart tissue were subjected to SDS PAGE followed by western blot with 13785-1-AP (PDE1C antibody) at dilution of 1:500 incubated at room temperature for 1.5 hours.

IP Result of anti-PDE1C (IP:13785-1-AP, 4ug; Detection:13785-1-AP 1:500) with mouse heart tissue lysate 4000ug.