

À des fins de recherche uniquement

Anticorps Polyclonal de lapin anti-EAF1



Numéro de catalogue: 13787-1-AP

4 Publications

Informations de base

Numéro de catalogue:
13787-1-AP

Taille:
150ul, Concentration: 350 µg/ml by Nanodrop and 233 µg/ml by Bradford method using BSA as the standard;

Hôte:
Lapin

Isotype:
IgG

Immunogen Catalog Number:
AG4804

Numéro d'acquisition GenBank:
BC041329

Identification du gène (NCBI):
85403

Nom complet:
ELL associated factor 1

MW calculé
268 aa, 29 kDa

MW observés:
43 kDa

Méthode de purification:
Purification par affinité contre l'antigène

Dilutions recommandées:
WB 1:500-1:1000
IP 0.5-4.0 ug for IP and 1:500-1:1000 for WB
IF 1:20-1:200

Applications

Applications testées:
IF, IP, WB, ELISA

Demandes citées:
WB

Spécificité de l'espèce:
Humain, rat, souris

Espèces citées:
Humain

Contrôles positifs:

WB : cellules K-562, cellules HeLa, tissu cérébral de souris

IP : cellules HeLa,

IF : cellules SH-SY5Y,

Informations générales

ELL associated factor 1 and ELL associated factor 2 (EAF1/2 factors) are reported to play important roles in tumor suppression and embryogenesis. The tumor suppressor EAF2 is regulated by androgen signaling and associated with prostate cancer. Eaf factors have been revealed to modulate mesoderm and neural patterning by inhibiting canonical Wnt signaling, and high activity of canonical Wnt/ β -catenin is revealed in eafs morphants (PMID: 23364330). Catalog# 13787-1-AP is a rabbit polyclonal antibody raised against the full-length of human EAF1.

Publications notables

Autrice	Pubmed ID	Journal	Application
Jing-Xia Liu	28887217	Biochim Biophys Acta	WB
Bijan Sobhian	20471949	Mol Cell	WB
Ping Liu	34215846	Cell Death Differ	WB

Stockage

Stockage:

Stocker à -20°C. Stable pendant un an après l'expédition.

Tampon de stockage:

PBS avec azoture de sodium à 0,02 % et glycérol à 50 % pH 7,3

L'aliquotage n'est pas nécessaire pour le stockage à -20C

*** Les 20ul contiennent 0,1% de BSA.

For technical support and original validation data for this product please contact:

T: 1 (888) 4PTGLAB (1-888-478-4522) (toll free in USA), or 1(312) 455-8498 (outside USA)

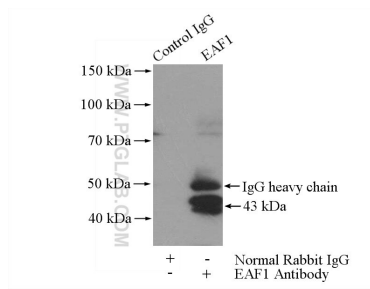
E: proteintech@ptglab.com
W: ptglab.com

This product is exclusively available under Proteintech Group brand and is not available to purchase from any other manufacturer.

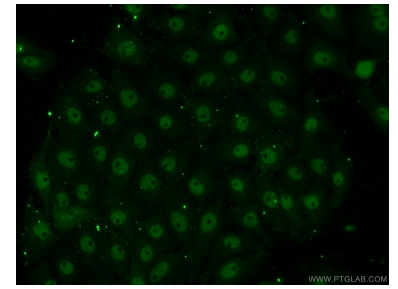
Données de validation sélectionnées



K-562 cells were subjected to SDS PAGE followed by western blot with 13787-1-AP (EAF1 antibody) at dilution of 1:500 incubated at room temperature for 1.5 hours.



IP Result of anti-EAF1 (IP:13787-1-AP, 4ug; Detection:13787-1-AP 1:500) with HeLa cells lysate 1200ug.



Immunofluorescent analysis of SH-SY5Y cells using 13787-1-AP (EAF1 antibody) at dilution of 1:50 and Alexa Fluor 488-conjugated AffiniPure Goat Anti-Rabbit IgG(H+L).