

À des fins de recherche uniquement

# Anticorps Polyclonal de lapin anti-ELP2



Numéro de catalogue: 13793-1-AP

## Informations de base

<b>Numéro de catalogue:</b> 13793-1-AP	<b>Numéro d'acquisition GenBank:</b> BC032553	<b>Méthode de purification:</b> Purification par affinité contre l'antigène
<b>Taille:</b> 150ul, Concentration: 500 µg/ml by Nanodrop and 353 µg/ml by Bradford method using BSA as the standard;	<b>Identification du gène (NCBI):</b> 55250	<b>Dilutions recommandées:</b> IHC 1:250-1:1000
<b>Hôte:</b> Lapin	<b>Nom complet:</b> elongation protein 2 homolog (S. cerevisiae)	
<b>Isotype:</b> IgG	<b>MW calculé</b> 826 aa, 93 kDa	
<b>Immunogen Catalog Number:</b> AG4581		

## Applications

### Applications testées:

IHC, ELISA

### Spécificité de l'espèce:

Humain, rat, souris

**Remarque-IHC: il est suggéré de démasquer l'antigène avec un tampon de TE buffer pH 9,0; (\*) À défaut, le démasquage de l'antigène peut être effectué avec un tampon citrate pH 6,0.**

### Contrôles positifs:

IHC : tissu de cancer de l'estomac humain, tissu de cancer du côlon humain, tissu hépatique de rat, tissu hépatique de souris, tissu rénal de rat, tissu rénal de souris

## Informations générales

ELP2 is a component of the elongator complex which is required for multiple tRNA modifications. The elongator complex catalyzes the formation of carboxymethyluridine in the wobble base at position 34 in tRNAs.

## Stockage

### Stockage:

Stocker à -20°C. Stable pendant un an après l'expédition.

### Tampon de stockage:

PBS avec azoture de sodium à 0,02 % et glycérol à 50 % pH 7,3

L'aliquotage n'est pas nécessaire pour le stockage à -20C

\*\*\* Les 20ul contiennent 0,1% de BSA.

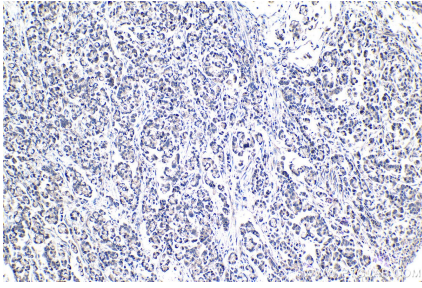
For technical support and original validation data for this product please contact:

T: 1 (888) 4PTGLAB (1-888-478-4522) (toll free in USA), or 1(312) 455-8498 (outside USA)

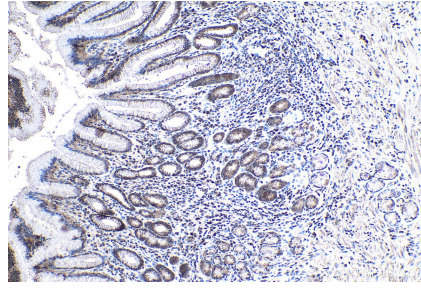
E: proteintech@ptglab.com  
W: ptglab.com

This product is exclusively available under Proteintech Group brand and is not available to purchase from any other manufacturer.

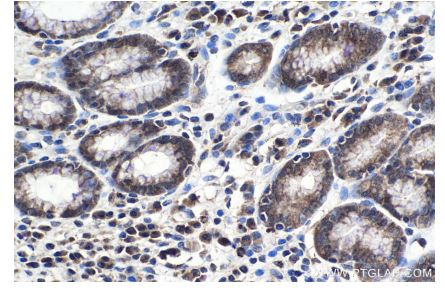
## Données de validation sélectionnées



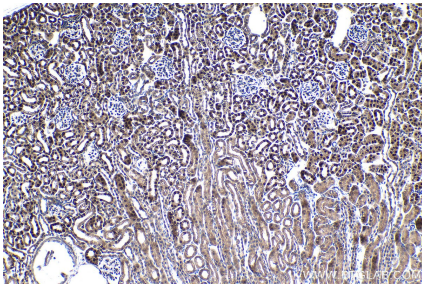
Immunohistochemical analysis of paraffin-embedded human colon cancer tissue slide using 13793-1-AP (ELP2 antibody) at dilution of 1:500 (under 10x lens). Heat mediated antigen retrieval with Tris-EDTA buffer (pH 9.0).



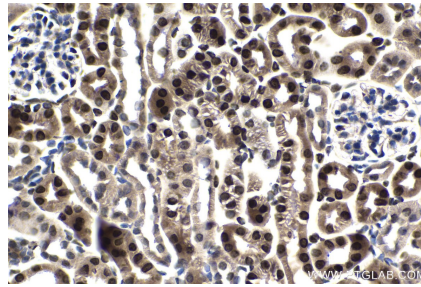
Immunohistochemical analysis of paraffin-embedded human stomach cancer tissue slide using 13793-1-AP (ELP2 antibody) at dilution of 1:500 (under 10x lens). Heat mediated antigen retrieval with Tris-EDTA buffer (pH 9.0).



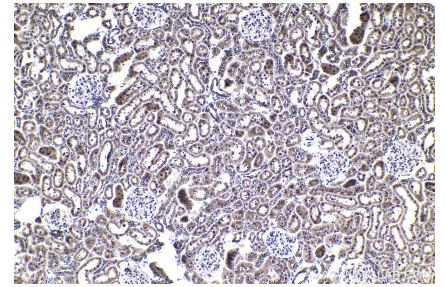
Immunohistochemical analysis of paraffin-embedded human stomach cancer tissue slide using 13793-1-AP (ELP2 antibody) at dilution of 1:500 (under 40x lens). Heat mediated antigen retrieval with Tris-EDTA buffer (pH 9.0).



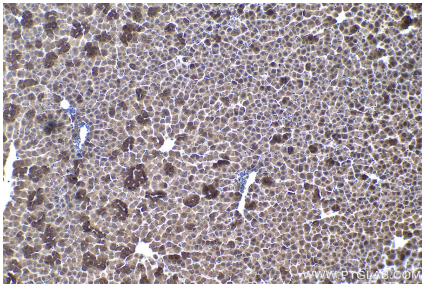
Immunohistochemical analysis of paraffin-embedded mouse kidney tissue slide using 13793-1-AP (ELP2 antibody) at dilution of 1:500 (under 10x lens). Heat mediated antigen retrieval with Tris-EDTA buffer (pH 9.0).



Immunohistochemical analysis of paraffin-embedded mouse kidney tissue slide using 13793-1-AP (ELP2 antibody) at dilution of 1:500 (under 40x lens). Heat mediated antigen retrieval with Tris-EDTA buffer (pH 9.0).



Immunohistochemical analysis of paraffin-embedded rat kidney tissue slide using 13793-1-AP (ELP2 antibody) at dilution of 1:500 (under 10x lens). Heat mediated antigen retrieval with Tris-EDTA buffer (pH 9.0).



Immunohistochemical analysis of paraffin-embedded rat liver tissue slide using 13793-1-AP (ELP2 antibody) at dilution of 1:500 (under 10x lens). Heat mediated antigen retrieval with Tris-EDTA buffer (pH 9.0).