

À des fins de recherche uniquement

# Anticorps Polyclonal de lapin anti-PAI-1



Numéro de catalogue: 13801-1-AP

38 Publications

## Informations de base

Numéro de catalogue:

13801-1-AP

Taille:

150ul, Concentration: 550 µg/ml by Nanodrop;

Hôte:

Lapin

Isotype:

IgG

Immunogen Catalog Number:

AG4777

Numéro d'acquisition GenBank:

BC010860

Identification du gène (NCBI):

5054

Nom complet:

serpin peptidase inhibitor, clade E (nexin, plasminogen activator inhibitor type 1), member 1

MW calculé

402 aa, 45 kDa

MW observés:

45 kDa

Méthode de purification:

Purification par affinité contre l'antigène

Dilutions recommandées:

WB 1:500-1:2000

IP 0.5-4.0 ug for IP and 1:500-1:2000 for WB

IHC 1:50-1:500

IF 1:50-1:500

## Applications

Applications testées:

IF, IHC, IP, WB, ELISA

Demandes citées:

CoIP, IF, IHC, WB

Spécificité de l'espèce:

Humain

Espèces citées:

bovin, Humain

Contrôles positifs:

WB : cellules HuH-7, cellules HepG2, cellules PC-12, cellules U2OS, tissu placentaire humain

IP : cellules HepG2,

IHC : tissu de cancer du poumon humain,

IF : cellules HUVEC,

**Remarque-IHC: il est suggéré de démasquer l'antigène avec un tampon de TE buffer pH 9,0; (\*) À défaut, 'le démasquage de l'antigène peut être 'effectué avec un tampon citrate pH 6,0.**

## Informations générales

SERPINE1, also named as Plasminogen activator inhibitor type 1 (PAI-1), is a member of the serine protease inhibitor (SERPIN) superfamily. PAI-1 is the principal inhibitor of tPA and uPA, and hence is an inhibitor of fibrinolysis. Defects in this gene are the cause of plasminogen activator inhibitor-1 deficiency (PAI-1 deficiency), and high concentrations of the gene product are associated with thrombophilia. In western blotting, we got two bands 50 kDa and 90-110 kDa, and 90-110 kDa consistent with PAI-1 in complex with its target protease, t-PA (PMID: 21596853).

## Publications notables

| Autrice        | Pubmed ID | Journal                    | Application |
|----------------|-----------|----------------------------|-------------|
| Yasuhiro Nanri | 31505128  | Am J Respir Cell Mol Biol  | IHC         |
| Zengqiang Miao | 31734109  | J Microbiol Immunol Infect | WB          |
| Muhammad Khan  | 36389725  | Front Immunol              | IHC         |

## Stockage

Stockage:

Stocker à -20°C. Stable pendant un an après l'expédition.

Tampon de stockage:

PBS avec azoture de sodium à 0,02 % et glycérol à 50 % pH 7,3

L'aliquotage n'est pas nécessaire pour le stockage à -20C

\*\*\* Les 20ul contiennent 0,1% de BSA.

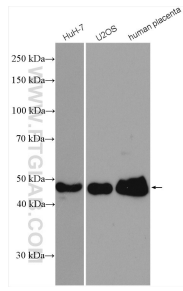
For technical support and original validation data for this product please contact:

T: 1 (888) 4PTGLAB (1-888-478-4522) (toll free in USA), or 1(312) 455-8498 (outside USA)

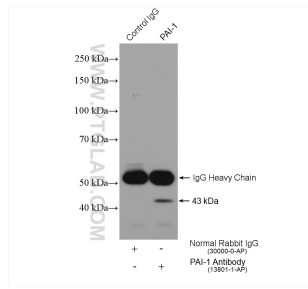
E: [proteintech@ptglab.com](mailto:proteintech@ptglab.com)  
W: [ptglab.com](http://ptglab.com)

This product is exclusively available under Proteintech Group brand and is not available to purchase from any other manufacturer.

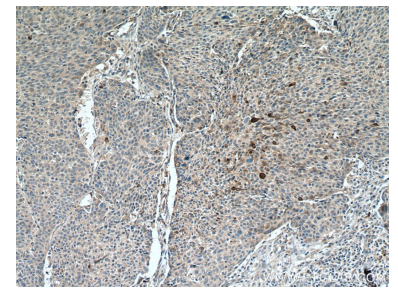
## Données de validation sélectionnées



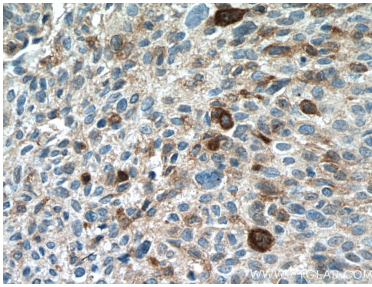
Various lysates were subjected to SDS PAGE followed by western blot with 13801-1-AP (PAI-1 antibody) at dilution of 1:1000 incubated at room temperature for 1.5 hours.



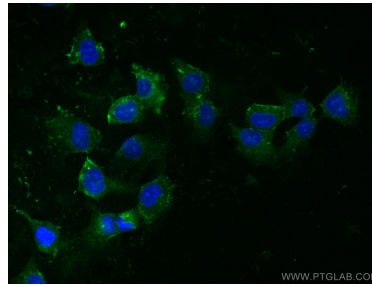
IP result of anti-PAI-1 (IP:13801-1-AP, 4 $\mu$ g; Detection:13801-1-AP 1:1000) with HepG2 cells lysate 880  $\mu$ g.



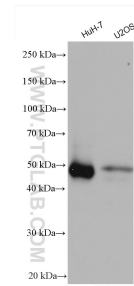
Immunohistochemical analysis of paraffin-embedded human lung cancer tissue slide using 13801-1-AP (PAI-1 antibody) at dilution of 1:200 (under 10x lens. Heat mediated antigen retrieval with Tris-EDTA buffer (pH 9.0).



Immunohistochemical analysis of paraffin-embedded human lung cancer tissue slide using 13801-1-AP (PAI-1 antibody) at dilution of 1:200 (under 40x lens. Heat mediated antigen retrieval with Tris-EDTA buffer (pH 9.0).



Immunofluorescent analysis of (-20°C Ethanol) fixed HUVEC cells using PAI-1 antibody (13801-1-AP) at dilution of 1:200 and CoraLite® 488-Conjugated AffiniPure Goat Anti-Rabbit IgG(H+L).



HuH-7 cells were subjected to SDS PAGE followed by western blot with 13801-1-AP (PAI-1 antibody) at dilution of 1:3000 incubated at room temperature for 1.5 hours.