

À des fins de recherche uniquement

# Anticorps Polyclonal de lapin anti-TKTL1



Numéro de catalogue: 13819-1-AP

## Informations de base

Numéro de catalogue: 13819-1-AP	Numéro d'acquisition GenBank: BC025382	Méthode de purification: Purification par affinité contre l'antigène
Taille: 150ul , Concentration: 450 µg/ml by Nanodrop;	Identification du gène (NCBI): 8277	Dilutions recommandées: WB 1:500-1:2000
Hôte: Lapin	Nom complet: transketolase-like 1	
Isotype: IgG	MW calculé 65 kDa	
Immunogen Catalog Number: AG4913	MW observés: 65 kDa	

## Applications

Applications testées: WB, ELISA	Contrôles positifs: WB : cellules HeLa, cellules HepG2, cellules MCF-7, cellules U-251
Spécificité de l'espèce: Humain	

## Informations générales

Transketolase (TKT) is an enzyme that is ubiquitously expressed in all living organisms and has been identified as an important regulator of cancer. The TKT family includes the TKT gene and two TKT-like (TKTL) genes; TKTL1 and TKTL2. The basic components ribose-5-phosphate and acetyl-CoA, which are formed by TKTL1, provide essential building blocks for the formation of new cells. TKTL1 also allows survival in the absence of oxygen (hypoxia). TKTL1 also has been shown to be involved in regulating neuronal development in the cerebral cortex.

## Stockage

**Stockage:**  
Stocker à -20°C. Stable pendant un an après l'expédition.  
**Tampon de stockage:**  
PBS avec azoture de sodium à 0,02 % et glycérol à 50 % pH 7,3  
L'aliquotage n'est pas nécessaire pour le stockage à -20C

**\*\*\* Les 20ul contiennent 0,1% de BSA.**

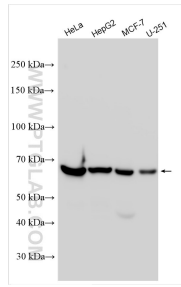
For technical support and original validation data for this product please contact:

T: 1 (888) 4PTGLAB (1-888-478-4522) (toll free in USA), or 1(312) 455-8498 (outside USA)

E: [proteintech@ptglab.com](mailto:proteintech@ptglab.com)  
W: [ptglab.com](http://ptglab.com)

This product is exclusively available under Proteintech Group brand and is not available to purchase from any other manufacturer.

## Données de validation sélectionnées



Various lysates were subjected to SDS PAGE followed by western blot with 13819-1-AP (TKL1 antibody) at dilution of 1:1000 incubated at room temperature for 1.5 hours.