

À des fins de recherche uniquement

Anticorps Polyclonal de lapin anti-SAP18



Numéro de catalogue: 13841-1-AP

1 Publications

Informations de base

Numéro de catalogue:

13841-1-AP

Taille:

150ul, Concentration: 350 µg/ml by Nanodrop and 233 µg/ml by Bradford method using BSA as the standard;

Hôte:

Lapin

Isotype:

IgG

Immunogen Catalog Number:

AG4795

Numéro d'acquisition GenBank:

BC030836

Identification du gène (NCBI):

10284

Nom complet:

Sin3A-associated protein, 18kDa

MW calculé

153 aa, 18 kDa

MW observés:

18 kDa

Méthode de purification:

Purification par affinité contre l'antigène

Dilutions recommandées:

WB 1:500-1:1000

IP 0.5-4.0 ug for IP and 1:500-1:1000 for WB

IHC 1:20-1:200

IF 1:20-1:200

Applications

Applications testées:

IF, IHC, IP, WB, ELISA

Demandes citées:

WB

Spécificité de l'espèce:

Humain, rat, souris

Espèces citées:

Humain

Remarque-IHC: il est suggéré de démasquer l'antigène avec un tampon de TE buffer pH 9,0; (*) A défaut, le démasquage de l'antigène peut être effectué avec un tampon citrate pH 6,0.

Contrôles positifs:

WB : cellules K-562,

IP : cellules K-562,

IHC : tissu de cancer du col de l'utérus humain,

IF : cellules HeLa,

Informations générales

SAP18 is part of the SIN3-repressing complex, which enhances the ability of SIN3-HDAC1-mediated transcriptional repression. When tethered to the promoter, it can direct the formation of a repressive complex to core histone proteins. Component of a splicing-dependent multiprotein exon junction complex (EJC) deposited at splice junction on mRNAs. The EJC is a dynamic structure consisting of a few core proteins and several more peripheral nuclear and cytoplasmic associated factors that join the complex only transiently either during EJC assembly or during subsequent mRNA metabolism

Publications notables

Autrice	Pubmed ID	Journal	Application
Mio Iwasaki	35573189	iScience	WB

Stockage

Stockage:

Stocker à -20°C. Stable pendant un an après l'expédition.

Tampon de stockage:

PBS avec azoture de sodium à 0,02 % et glycérol à 50 % pH 7,3

L'aliquotage n'est pas nécessaire pour le stockage à -20C

*** Les 20ul contiennent 0,1% de BSA.

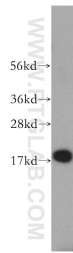
For technical support and original validation data for this product please contact:

T: 1 (888) 4PTGLAB (1-888-478-4522) (toll free in USA), or 1(312) 455-8498 (outside USA)

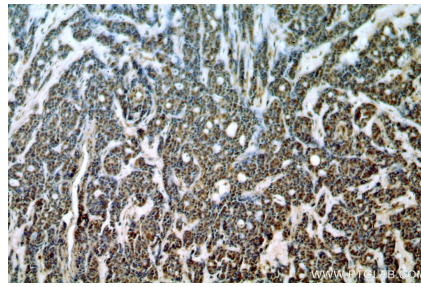
E: proteintech@ptglab.com
W: ptglab.com

This product is exclusively available under Proteintech Group brand and is not available to purchase from any other manufacturer.

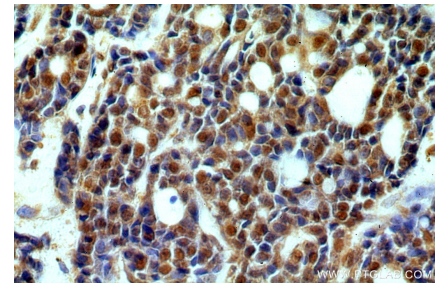
Données de validation sélectionnées



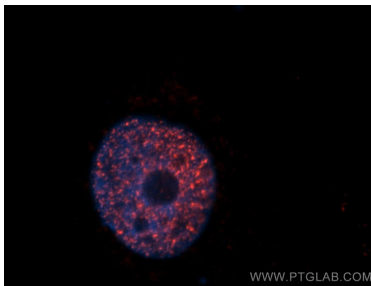
K-562 cells were subjected to SDS PAGE followed by western blot with 13841-1-AP (SAP18 antibody) at dilution of 1:500 incubated at room temperature for 1.5 hours.



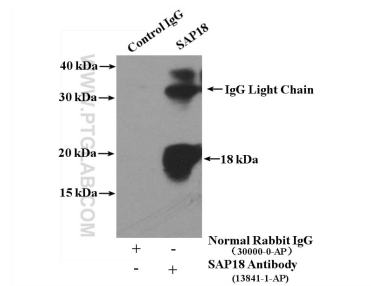
Immunohistochemical analysis of paraffin-embedded human cervical cancer using 13841-1-AP (SAP18 antibody) at dilution of 1:50 (under 10x lens).



Immunohistochemical analysis of paraffin-embedded human cervical cancer using 13841-1-AP (SAP18 antibody) at dilution of 1:50 (under 40x lens).



Immunofluorescent analysis of HeLa cells, using SAP18 antibody 13841-1-AP at 1:50 dilution and Rhodamine-labeled goat anti-rabbit IgG (red). Blue pseudocolor = DAPI (fluorescent DNA dye).



IP Result of anti-SAP18 (IP:13841-1-AP, 4ug; Detection:13841-1-AP 1:500) with K-562 cells lysate 3200ug.