

À des fins de recherche uniquement

Anticorps Polyclonal de lapin anti-AEG-1/MTDH-Specific



Numéro de catalogue: 13860-1-AP

Phare

49 Publications

Informations de base

Numéro de catalogue:

13860-1-AP

Taille:

150ul, Concentration: 900 µg/ml by Nanodrop and 353 µg/ml by Bradford method using BSA as the standard;

Hôte:

Lapin

Isotype:

IgG

Immunogen Catalog Number:

AG4840

Numéro d'acquisition GenBank:

BC045642

Identification du gène (NCBI):

92140

Nom complet:

metadherin

MW calculé

582 aa, 64 kDa

MW observés:

65-70 kDa

Méthode de purification:

Purification par affinité contre l'antigène

Dilutions recommandées:

WB 1:500-1:2000

IP 0.5-4.0 ug for IP and 1:500-1:2000 for WB

IHC 1:200-1:800

IF 1:20-1:200

Applications

Applications testées:

IF, IHC, IP, WB, ELISA

Demandes citées:

CoIP, IF, IHC, IP, RIP, WB

Spécificité de l'espèce:

Humain, rat, souris

Espèces citées:

Humain, rat, souris

Remarque-IHC: il est suggéré de démasquer l'antigène avec un tampon de TE buffer pH 9,0; (*) À défaut, 'le démasquage de l'antigène peut être 'effectué avec un tampon citrate pH 6,0.

Contrôles positifs:

WB : cellules MCF-7, cellules A375, cellules A549, cellules DU 145, cellules HeLa, cellules HepG2, cellules HL-60, cellules PC-3, cellules RAW 264.7, tissu splénique de souris

IP : cellules MCF-7,

IHC : tissu de cancer du sein humain, tissu cérébral de souris, tissu de cancer du foie humain

IF : cellules MCF-7,

Informations générales

MTDH, also known as AEG-1, is a single-pass transmembrane protein with its gene located at chromosome 8q22, the abnormalities of which have been identified in several tumor types. MTDH is overexpressed in a number of malignancies, such as breast cancer, malignant glioma, and neuroblastoma, and its overexpression is associated with poor clinical outcome. MTDH plays an important role in the regulation of carcinogenesis and tumor progression. This antibody got two bands about 70 kDa and 80 kDa in western blotting, possibly due to posttranslational modification. This antibody is specific to AEG-1/MTDH.

Publications notables

Autrice	Pubmed ID	Journal	Application
Kai-Lin Peng	36067288	Proc Natl Acad Sci U S A	RIP
Kunmei Liu	36237597	Exp Ther Med	WB
Junqi Fu	36133745	Mediators Inflamm	WB

Stockage

Stockage:

Stocker à -20°C. Stable pendant un an après l'expédition.

Tampon de stockage:

PBS avec azoture de sodium à 0,02 % et glycérol à 50 % pH 7,3

L'aliquotage n'est pas nécessaire pour le stockage à -20C

*** Les 20ul contiennent 0,1% de BSA.

For technical support and original validation data for this product please contact:

T: 1 (888) 4PTGLAB (1-888-478-4522) (toll free in USA), or 1(312) 455-8498 (outside USA)

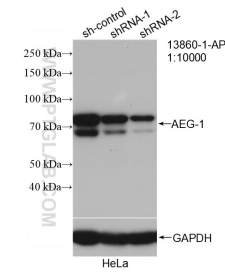
E: proteintech@ptglab.com
W: ptglab.com

This product is exclusively available under Proteintech Group brand and is not available to purchase from any other manufacturer.

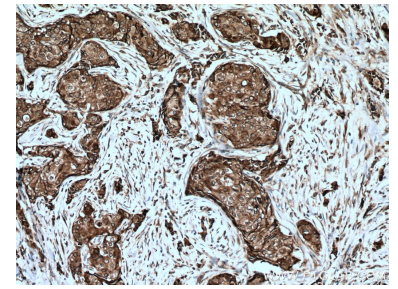
Données de validation sélectionnées



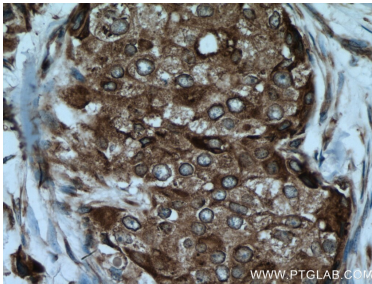
MCF-7 cells were subjected to SDS PAGE followed by western blot with 13860-1-AP (AEG-1/MTDH-Specific antibody) at dilution of 1:1000 incubated at room temperature for 1.5 hours.



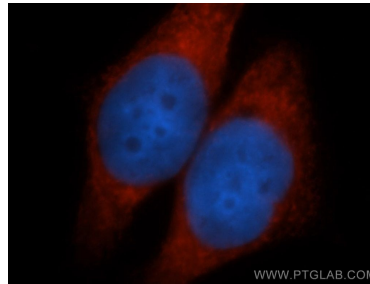
WB result of AEG-1/MTDH-Specific antibody (13860-1-AP; 1:10000; incubated at room temperature for 1.5 hours) with sh-Control and sh-AEG-1/MTDH-Specific transfected HeLa cells.



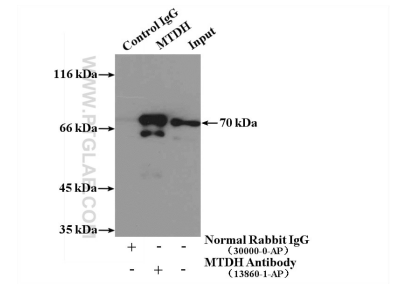
Immunohistochemical analysis of paraffin-embedded human breast cancer tissue slide using 13860-1-AP (AEG-1/MTDH-Specific antibody) at dilution of 1:400 (under 10x lens). Heat mediated antigen retrieval with Tris-EDTA buffer (pH 9.0).



Immunohistochemical analysis of paraffin-embedded human breast cancer tissue slide using 13860-1-AP (AEG-1/MTDH-Specific antibody) at dilution of 1:400 (under 40x lens). Heat mediated antigen retrieval with Tris-EDTA buffer (pH 9.0).



Immunofluorescent analysis of MCF-7 cells, using MTDH antibody 13860-1-AP at 1:50 dilution and Rhodamine-labeled goat anti-rabbit IgG (red). Blue pseudocolor = DAPI (fluorescent DNA dye).



IP Result of anti-AEG-1/MTDH-Specific (IP:13860-1-AP, 3ug; Detection:13860-1-AP 1:1000) with MCF-7 cells lysate 3250ug.