

À des fins de recherche uniquement

# Anticorps Polyclonal de lapin anti-KBTBD2



Numéro de catalogue: 13871-1-AP

## Informations de base

<b>Numéro de catalogue:</b> 13871-1-AP	<b>Numéro d'acquisition GenBank:</b> BC047107	<b>Méthode de purification:</b> Purification par affinité contre l'antigène
<b>Taille:</b> 150ul , Concentration: 240 µg/ml by Nanodrop;	<b>Identification du gène (NCBI):</b> 25948	<b>Dilutions recommandées:</b> WB 1:500-1:1000 IHC 1:20-1:200
<b>Hôte:</b> Lapin	<b>Nom complet:</b> kelch repeat and BTB (POZ) domain containing 2	
<b>Isotype:</b> IgG	<b>MW calculé</b> 622 aa, 71 kDa	
<b>Immunogen Catalog Number:</b> AG4823	<b>MW observés:</b> 60-70 kDa	

## Applications

**Applications testées:**  
IHC, WB, ELISA

**Spécificité de l'espèce:**  
Humain, rat, souris

**Remarque-IHC: il est suggéré de démasquer l'antigène avec un tampon de TE buffer pH 9.0; (\*) À défaut, 'le démasquage de l'antigène peut être effectué avec un tampon citrate pH 6,0.**

**Contrôles positifs:**

WB : cellules COLO 320, cellules A549  
IHC : tissu de cancer du côlon humain,

## Informations générales

Kelch repeat and BTB domain containing 2(KBTBD2), also known as BTB and kelch domain-containing protein 1, encodes a BTB-Kelch family subunit that p85a-specific recognition for the Cullin3-based E3 ubiquitin ligase complex, which regulates p85a protein ubiquitination and subsequently regulates phosphoinositide-3 kinases (PI3K) signaling (PMID:27708159). However, the expression profile and functional significance of Kbtbd2 is still largely unknown. The Human Protein Atlas which is an online source shows high Kbtbd2 expression in the spleen and thymus, suggesting that Kbtbd2 might involved in immunization (PMID:29331106). In addition, Kbtbd2 is related to Src-induced phosphorylation of protein, spermatogonial stem cell activity(PMID:15623525, 29331106). A 60-70 kDa band has also been reported(PMID:27708159).

## Stockage

**Stockage:**

Stocker à -20°C. Stable pendant un an après l'expédition.

**Tampon de stockage:**

PBS avec azotate de sodium à 0,02 % et glycérol à 50 % pH 7,3

L'aliquotage n'est pas nécessaire pour le stockage à -20C

**\*\*\* Les 20ul contiennent 0,1% de BSA.**

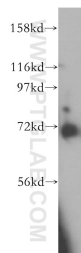
For technical support and original validation data for this product please contact:

T: 1 (888) 4PTGLAB (1-888-478-4522) (toll free in USA), or 1(312) 455-8498 (outside USA)

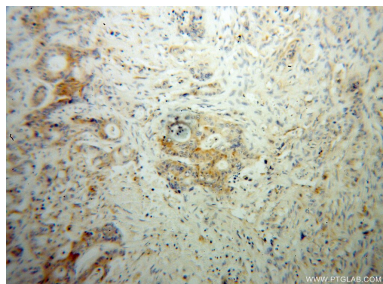
E: proteintech@ptglab.com  
W: ptglab.com

**This product is exclusively available under Proteintech Group brand and is not available to purchase from any other manufacturer.**

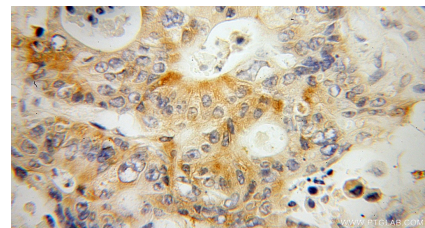
## Données de validation sélectionnées



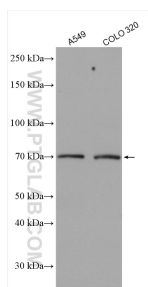
COLO 320 cells were subjected to SDS PAGE followed by western blot with 13871-1-AP (KBTBD2 antibody) at dilution of 1:500 incubated at room temperature for 1.5 hours.



Immunohistochemical analysis of paraffin-embedded human colon cancer using 13871-1-AP (KBTBD2 antibody) at dilution of 1:50 (under 10x lens).



Immunohistochemical analysis of paraffin-embedded human colon cancer using 13871-1-AP (KBTBD2 antibody) at dilution of 1:50 (under 40x lens).



Various lysates were subjected to SDS PAGE followed by western blot with 13871-1-AP (KBTBD2 antibody) at dilution of 1:1000 incubated at room temperature for 1.5 hours.