

À des fins de recherche uniquement

Anticorps Polyclonal de lapin anti-DGKH



Numéro de catalogue: 13873-1-AP

Phare

7 Publications

Informations de base

Numéro de catalogue:

13873-1-AP

Taille:

150ul, Concentration: 700 µg/ml by Nanodrop and 300 µg/ml by Bradford method using BSA as the standard;

Hôte:

Lapin

Isotype:

IgG

Immunogen Catalog Number:

AG4926

Numéro d'acquisition GenBank:

BC043292

Identification du gène (NCBI):

160851

Nom complet:

diacylglycerol kinase, eta

MW calculé

1100 aa, 122 kDa

MW observés:

135 kDa

Méthode de purification:

Purification par affinité contre l'antigène

Dilutions recommandées:

WB 1:500-1:2400

IP 0.5-4.0 ug for IP and 1:500-1:1000 for WB

IHC 1:50-1:500

IF 1:50-1:500

Applications

Applications testées:

IF, IHC, IP, WB, ELISA

Demandes citées:

IF, IHC, WB

Spécificité de l'espèce:

Humain, rat, souris

Espèces citées:

Humain, rat, souris

Remarque-IHC: il est suggéré de démasquer l'antigène avec un tampon de TE buffer pH 9,0; (*) A défaut, 'le démasquage de l'antigène peut être effectué avec un tampon citrate pH 6,0.

Contrôles positifs:

WB : tissu cérébral de souris,

IP : tissu cérébral de souris,

IHC : tissu testiculaire humain,

IF : cellules SH-SY5Y,

Informations générales

DGKH(Diacylglycerol kinase eta) is also named as DGK-eta and belongs to the eukaryotic diacylglycerol kinase family. It is a key protein in the lithium-sensitive phosphatidylinositol pathway, and recently a link between environmental stress and schizophrenia/bipolar disorder has been revealed. DGKH has some isoforms produced by alternative splicing. Two isoforms DGKH1 and DGKH2 with the molecular weight of 128 kDa and 135 kDa shows diacylglycerol kinase activity; however, the 2 isoforms differed in several other characteristics(PMID:12810723).

Publications notables

Autrice	Pubmed ID	Journal	Application
Takako Usuki	25362140	J Histochem Cytochem	WB
Yimin Sun	36366731	Cancer Med	WB
Takao Shionoya	25613821	BMC Dev Biol	WB

Stockage

Stockage:

Stocker à -20°C. Stable pendant un an après l'expédition.

Tampon de stockage:

PBS avec azoture de sodium à 0,02 % et glycérol à 50 % pH 7,3

L'aliquotage n'est pas nécessaire pour le stockage à -20C

*** Les 20ul contiennent 0,1% de BSA.

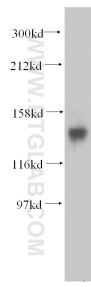
For technical support and original validation data for this product please contact:

T: 1 (888) 4PTGLAB (1-888-478-4522) (toll free in USA), or 1(312) 455-8498 (outside USA)

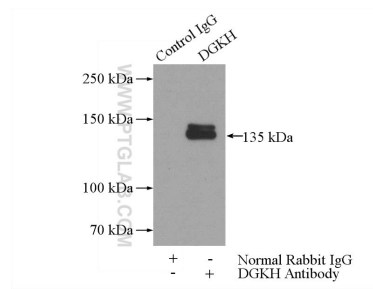
E: proteintech@ptglab.com
W: ptglab.com

This product is exclusively available under Proteintech Group brand and is not available to purchase from any other manufacturer.

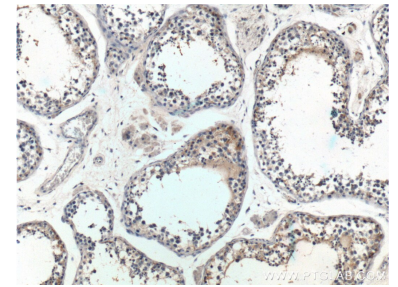
Données de validation sélectionnées



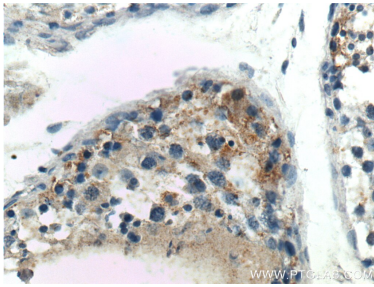
mouse brain tissue were subjected to SDS PAGE followed by western blot with 13873-1-AP (DGKH antibody) at dilution of 1:300 incubated at room temperature for 1.5 hours.



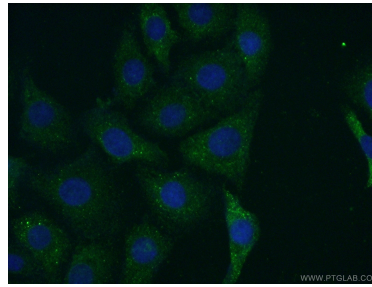
IP Result of anti-DGKH (IP:13873-1-AP, 5ug; Detection:13873-1-AP 1:500) with mouse brain tissue lysate 2640ug.



Immunohistochemical analysis of paraffin-embedded human testis tissue slide using 13873-1-AP (DGKH Antibody) at dilution of 1:200 (under 10x lens).



Immunohistochemical analysis of paraffin-embedded human testis tissue slide using 13873-1-AP (DGKH Antibody) at dilution of 1:200 (under 40x lens).



Immunofluorescent analysis of (-20°C Acetone) fixed SH-SY5Y cells using 13873-1-AP (DGKH antibody) at dilution of 1:50 and Alexa Fluor 488-conjugated AffiniPure Goat Anti-Rabbit IgG(H+L).