

À des fins de recherche uniquement

Anticorps Polyclonal de lapin anti-S1PR5/EDG8



Numéro de catalogue: 13874-1-AP

2 Publications

Informations de base

Numéro de catalogue:

13874-1-AP

Taille:

150ul, Concentration: 350 µg/ml by Nanodrop and 200 µg/ml by Bradford method using BSA as the standard;

Hôte:

Lapin

Isotype:

IgG

Immunogen Catalog Number:

AG4928

Numéro d'acquisition GenBank:

BC034703

Identification du gène (NCBI):

53637

Nom complet:

sphingosine-1-phosphate receptor 5

MW calculé

398 aa, 42 kDa

MW observés:

50-55 kDa

Méthode de purification:

Purification par affinité contre l'antigène

Dilutions recommandées:

WB 1:500-1:1000

Applications

Applications testées:

FC, WB, ELISA

Demandes citées:

WB

Spécificité de l'espèce:

Humain, souris

Espèces citées:

Humain, souris

Contrôles positifs:

WB : tissu cérébral de souris, cellules HEK-293, cellules HeLa, cellules Jurkat, cellules K-562

Informations générales

Sphingosine 1-phosphate (S1P) is a biologically active lysophospholipid that elicits diverse physiological effect on most types of cells and tissues via five G protein-coupled receptors, S1PR1 to S1PR5. S1PRs differ in their tissue expression and cell lineage: S1PR1-3 are expressed throughout the immune, central nervous system (CNS), and cardiovascular system; S1PR4 is primarily expressed in lymphoid tissue; and S1PR5 is a predominant receptor in CNS white matter, spleen and natural killer cells (PMID: 21707490). S1PR5 (also known as EDG8) has been involved in the trafficking of NK cells and monocytes (PMID: 21911833; 23519784).

Publications notables

Autrice	Pubmed ID	Journal	Application
Dianna Liu	35210754	Drug Des Devel Ther	WB
Rie Matsushima-Nishiwaki	30543684	PLoS One	WB

Stockage

Stockage:

Stocker à -20°C. Stable pendant un an après l'expédition.

Tampon de stockage:

PBS avec azotate de sodium à 0,02 % et glycérol à 50 % pH 7,3

L'aliquotage n'est pas nécessaire pour le stockage à -20C

*** Les 20ul contiennent 0,1% de BSA.

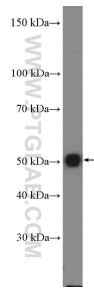
For technical support and original validation data for this product please contact:

T: 1 (888) 4PTGLAB (1-888-478-4522) (toll free in USA), or 1(312) 455-8498 (outside USA)

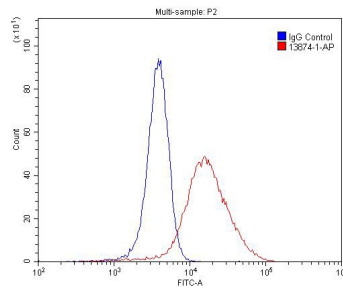
E: proteintech@ptglab.com
W: ptglab.com

This product is exclusively available under Proteintech Group brand and is not available to purchase from any other manufacturer.

Données de validation sélectionnées



mouse brain tissue were subjected to SDS PAGE followed by western blot with 13874-1-AP (S1PR5/EDG8 antibody at dilution of 1:600 incubated at room temperature for 1.5 hours.



1×10^6 SH-SY5Y cells were stained with 0.2ug S1PR5/EDG8 antibody (13874-1-AP, red) and control antibody (blue). Fixed with 4% PFA blocked with 3% BSA (30 min). Alexa Fluor 488-conjugated AffiniPure Goat Anti-Rabbit IgG(H+L) with dilution 1:1500.