

À des fins de recherche uniquement

# Anticorps Polyclonal de lapin anti- PKC Iota



Numéro de catalogue: 13883-1-AP

Phare

5 Publications

## Informations de base

Numéro de catalogue:

13883-1-AP

Taille:

150ul, Concentration: 550 µg/ml by Nanodrop;

Hôte:

Lapin

Isotype:

IgG

Immunogen Catalog Number:

AG4990

Numéro d'acquisition GenBank:

BC022016

Identification du gène (NCBI):

5584

Nom complet:

protein kinase C, iota

MW calculé

68 kDa

MW observés:

67 kDa

Méthode de purification:

Purification par affinité contre l'antigène

Dilutions recommandées:

WB 1:1000-1:6000

IP 0.5-4.0 ug for IP and 1:1000-1:4000 for WB

IHC 1:50-1:500

IF 1:200-1:800

## Applications

Applications testées:

FC (Intra), IF, IHC, IP, WB, ELISA

Demandes citées:

CoIP, IF, IHC, WB

Spécificité de l'espèce:

Humain

Espèces citées:

Humain, poulet, souris

Contrôles positifs:

WB : cellules HeLa, cellules MCF-7

IP : cellules HeLa,

IHC : tissu de cancer du sein humain, tissu de cancer du poumon humain

IF : cellules HeLa,

**Remarque-IHC: il est suggéré de démasquer l'antigène avec un tampon de TE buffer pH 9,0; (\*) À défaut, le démasquage de l'antigène peut être effectué avec un tampon citrate pH 6,0.**

## Informations générales

### Publications notables

Auteur	Pubmed ID	Journal	Application
Wei Gao	33234130	Mol Cancer	WB,IF
Liu Liu	31410027	Onco Targets Ther	WB,IHC
Fangfei Li	35173550	Int J Biol Sci	WB

## Stockage

Stockage:

Stocker à -20°C. Stable pendant un an après l'expédition.

Tampon de stockage:

PBS avec azoture de sodium à 0,02 % et glycérol à 50 % pH 7,3

L'aliquote n'est pas nécessaire pour le stockage à -20C

\*\*\* Les 20ul contiennent 0,1% de BSA.

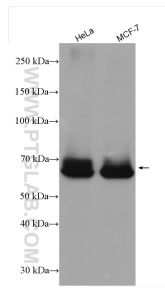
For technical support and original validation data for this product please contact:

T: 1 (888) 4PTGLAB (1-888-478-4522) (toll free in USA), or 1(312) 455-8498 (outside USA)

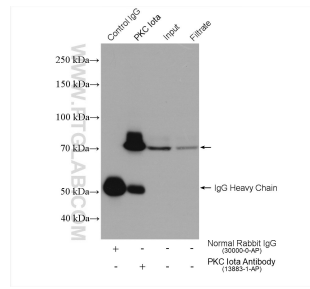
E: proteintech@ptglab.com  
W: ptglab.com

This product is exclusively available under Proteintech Group brand and is not available to purchase from any other manufacturer.

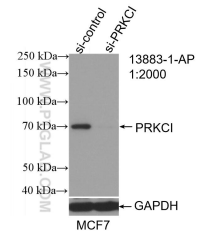
## Données de validation sélectionnées



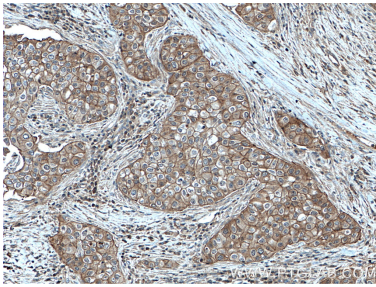
Various lysates were subjected to SDS PAGE followed by western blot with 13883-1-AP (PKC iota antibody) at dilution of 1:3000 incubated at room temperature for 1.5 hours.



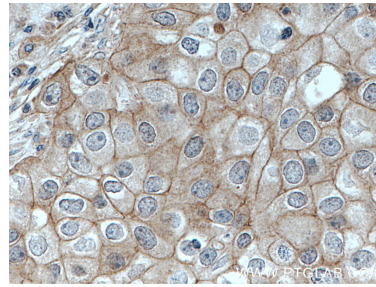
IP result of anti-PKC iota (IP:13883-1-AP, 4ug; Detection:13883-1-AP 1:2000) with HeLa cells lysate 1720 ug.



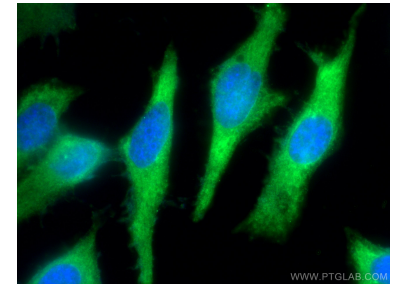
WB result of PKC iota antibody (13883-1-AP; 1:2000; incubated at room temperature for 1.5 hours) with sh-Control and sh-PKC iota transfected MCF-7 cells.



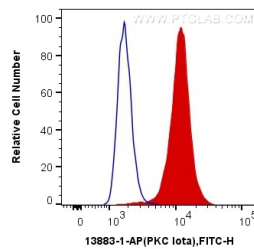
Immunohistochemical analysis of paraffin-embedded human breast cancer tissue slide using 13883-1-AP (PKC iota antibody) at dilution of 1:200 (under 10x lens). Heat mediated antigen retrieval with Tris-EDTA buffer (pH 9.0).



Immunohistochemical analysis of paraffin-embedded human breast cancer tissue slide using 13883-1-AP (PKC iota antibody) at dilution of 1:200 (under 40x lens). Heat mediated antigen retrieval with Tris-EDTA buffer (pH 9.0).



Immunofluorescent analysis of (-20°C Methanol) fixed HeLa cells using PKC iota antibody (13883-1-AP) at dilution of 1:400 and CoraLite@488-Conjugated AffiniPure Goat Anti-Rabbit IgG(H+L).



1X10<sup>6</sup> HeLa cells were intracellularly stained with 0.2 ug Anti-Human PKC iota (13883-1-AP) and CoraLite@488-Conjugated AffiniPure Goat Anti-Rabbit IgG(H+L) at dilution 1:1000 (red), or 0.2 ug Control Antibody. Cells were fixed with 4% PFA and permeabilized with Flow Cytometry Perm Buffer (PF00011-C).