

À des fins de recherche uniquement

# Anticorps Polyclonal de lapin anti-CX3CR1



Numéro de catalogue: 13885-1-AP

Phare

27 Publications

## Informations de base

Numéro de catalogue:

13885-1-AP

Taille:

150ul, Concentration: 600 µg/ml by Nanodrop;

Hôte:

Lapin

Isotype:

IgG

Immunogen Catalog Number:

AG4149

Numéro d'acquisition GenBank:

BC028078

Identification du gène (NCBI):

1524

Nom complet:

chemokine (C-X3-C motif) receptor 1

MW calculé

40 kDa

MW observés:

44-47 kDa

Méthode de purification:

Purification par affinité contre l'antigène

Dilutions recommandées:

WB 1:1000-1:4000

IP 0.5-4.0 µg for IP and 1:500-1:2000 for WB

IHC 1:20-1:200

## Applications

Applications testées:

FC, IHC, IP, WB, ELISA

Demandes citées:

Cell treatment, CoIP, FC, IF, IHC, IP, WB

Spécificité de l'espèce:

Humain

Espèces citées:

Humain, rat, souris

Contrôles positifs:

WB : cellules HeLa, cellules HEK-293, cellules HL-60, cellules K-562, cellules SH-SY5Y, cellules U-937

IP : cellules SH-SY5Y,

IHC : tissu d'amygdalite humain, tissu cérébral de souris

**Remarque-IHC: il est suggéré de démasquer l'antigène avec un tampon de TE buffer pH 9,0; (\*) À défaut, le démasquage de l'antigène peut être effectué avec un tampon citrate pH 6,0.**

## Informations générales

CX3CR1, also known as GPR13, V28 and fractalkine receptor, belongs to the 7-transmembrane G protein-coupled receptor (GPCR) family. It is expressed on microglia, astrocytes, NK cells, monocytes/macrophages, and a subpopulation of T cells. CX3CR1 is the receptor for fractalkine (CX3CL1) and mediates both its adhesive and migratory functions. It also acts as coreceptor with CD4 for HIV-1 virus envelope protein (in vitro), and some variations in the gene of CX3CR1 lead to increased susceptibility to HIV-1 infection and rapid progression to AIDS. Defects in CX3CR1 are a cause of susceptibility to age-related macular degeneration type 12 (ARMD12).

## Publications notables

Autrice	Pubmed ID	Journal	Application
Jie Li	34561797	Environ Sci Pollut Res Int	WB
Haiyuan Liu	32980177	Gastroenterol Hepatol	WB
Ricardo Bonfante	30248434	Neuroscience	IHC

## Stockage

Stockage:

Stocker à -20°C. Stable pendant un an après l'expédition.

Tampon de stockage:

PBS avec azoture de sodium à 0,02 % et glycérol à 50 % pH 7,3

L'aliquotage n'est pas nécessaire pour le stockage à -20C

\*\*\* Les 20ul contiennent 0,1% de BSA.

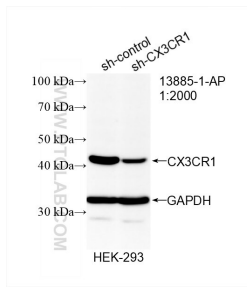
For technical support and original validation data for this product please contact:

T: 1 (888) 4PTGLAB (1-888-478-4522) (toll free in USA), or 1(312) 455-8498 (outside USA)

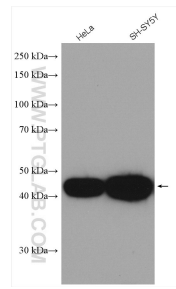
E: [proteintech@ptglab.com](mailto:proteintech@ptglab.com)  
W: [ptglab.com](http://ptglab.com)

This product is exclusively available under Proteintech Group brand and is not available to purchase from any other manufacturer.

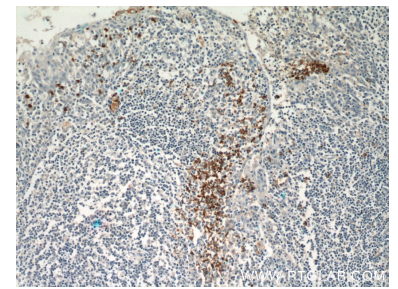
## Données de validation sélectionnées



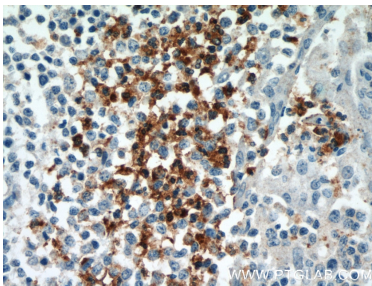
WB result of CX3CR1 antibody (13885-1-AP; 1:2000; incubated at room temperature for 1.5 hours) with sh-Control and sh-CX3CR1 transfected HEK-293 cells.



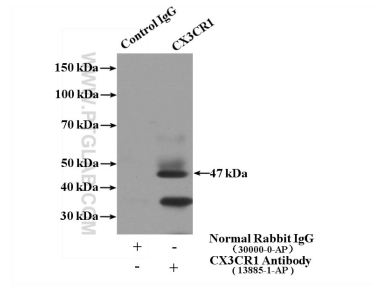
Various lysates were subjected to SDS PAGE followed by western blot with 13885-1-AP (CX3CR1 antibody) at dilution of 1:2000 incubated at room temperature for 1.5 hours.



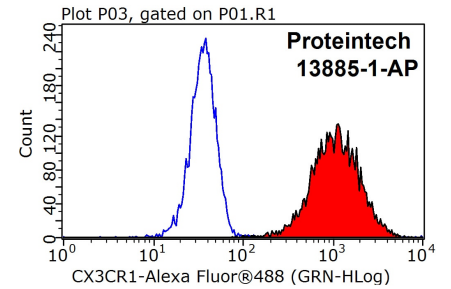
Immunohistochemical analysis of paraffin-embedded human tonsillitis using 13885-1-AP (CX3CR1 antibody) at dilution of 1:50 (under 10x lens).



Immunohistochemical analysis of paraffin-embedded human tonsillitis using 13885-1-AP (CX3CR1 antibody) at dilution of 1:50 (under 40x lens).



IP Result of anti-CX3CR1 (IP:13885-1-AP, 4ug; Detection:13885-1-AP 1:1000) with SH-SY5Y cells lysate 1600ug.



1X10<sup>6</sup> K-562 cells were stained with 0.2ug CX3CR1 antibody (13885-1-AP, red) and control antibody (blue). Fixed with 90% MeOH blocked with 3% BSA (30 min). Alexa Fluor 488-conjugated AffiniPure Goat Anti-Rabbit IgG(H+L) with dilution 1:1000.