

À des fins de recherche uniquement

Anticorps Polyclonal de lapin anti-D2HGDH



Numéro de catalogue: 13895-1-AP

Phare

13 Publications

Informations de base

Numéro de catalogue:
13895-1-AP

Taille:
150ul, Concentration: 300 µg/ml by Nanodrop and 267 µg/ml by Bradford method using BSA as the standard;

Hôte:
Lapin

Isotype:
IgG

Immunogen Catalog Number:
AG4857

Numéro d'acquisition GenBank:
BC036604

Identification du gène (NCBI):
728294

Nom complet:
D-2-hydroxyglutarate dehydrogenase

MW calculé
521 aa, 56 kDa

MW observés:
56 kDa

Méthode de purification:
Purification par affinité contre l'antigène

Dilutions recommandées:
WB 1:500-1:2000
IP 0.5-4.0 ug for IP and 1:500-1:1000 for WB
IHC 1:50-1:500
IF 1:20-1:200

Applications

Applications testées:
IF, IHC, IP, WB, ELISA

Demandes citées:
IF, IHC, WB

Spécificité de l'espèce:
Humain, rat, souris

Espèces citées:
Humain, souris

Remarque-IHC: il est suggéré de démasquer l'antigène avec un tampon de TE buffer pH 9,0; (*) A défaut, 'le démasquage de l'antigène peut être effectué avec un tampon citrate pH 6,0.

Contrôles positifs:

WB : tissu rénal de souris, tissu cardiaque humain, tissu hépatique de rat, tissu hépatique de souris, tissu hépatique humain

IP : tissu hépatique de souris,

IHC : tissu de cancer du foie humain,

IF : cellules HepG2,

Informations générales

D2HGDH(D-2-hydroxyglutarate dehydrogenase, mitochondrial) is also named as D2HGD and belongs to the FAD-binding oxidoreductase/transferase type 4 family. It catalyzes the oxidation of D-2-hydroxyglutarate to alpha-ketoglutarate. Defects in D2HGDH are the cause of D-2-hydroxyglutaric aciduria type 1 (D2HGA1). It has 2 isoforms produced by alternative splicing.

Publications notables

Autrice	Pubmed ID	Journal	Application
Giulia Notarangelo	36173860	Science	WB
Krell Daniel D	21625441	PLoS One	IHC
Raffaella S Berger	31092874	Sci Rep	

Stockage

Stockage:

Stocker à -20°C. Stable pendant un an après l'expédition.

Tampon de stockage:

PBS avec azoture de sodium à 0,02 % et glycérol à 50 % pH 7,3

L'aliquotage n'est pas nécessaire pour le stockage à -20C

*** Les 20ul contiennent 0,1% de BSA.

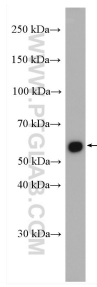
For technical support and original validation data for this product please contact:

T: 1 (888) 4PTGLAB (1-888-478-4522) (toll free in USA), or 1(312) 455-8498 (outside USA)

E: proteintech@ptglab.com
W: ptglab.com

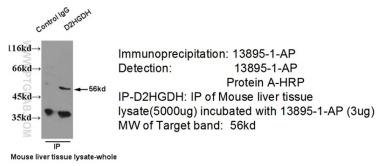
This product is exclusively available under Proteintech Group brand and is not available to purchase from any other manufacturer.

Données de validation sélectionnées

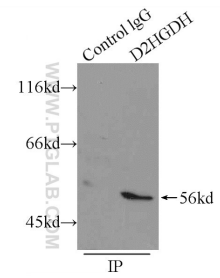


mouse kidney tissue were subjected to SDS PAGE followed by western blot with 13895-1-AP (D2HGDH antibody) at dilution of 1:1000 incubated at room temperature for 1.5 hours.

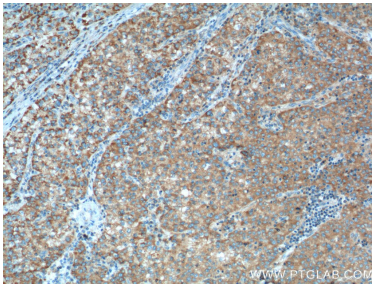
IP & WB of 13895-1-AP with Mouse liver tissue



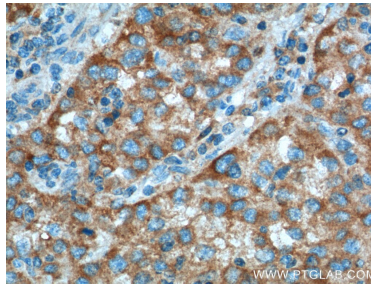
IP result of anti-D2HGDH (13895-1-AP for IP and Detection) with mouse liver tissue lysate.



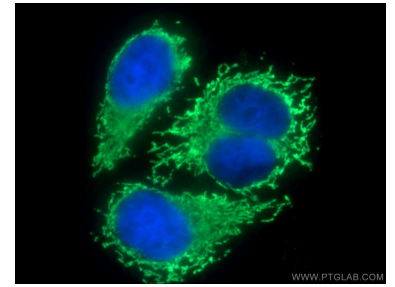
IP Result of anti-D2HGDH (IP:13895-1-AP, 3ug; Detection:13895-1-AP 1:500) with mouse liver tissue lysate 5000ug.



Immunohistochemical analysis of paraffin-embedded human liver cancer tissue slide using 13895-1-AP (D2HGDH Antibody) at dilution of 1:200 (under 10x lens). Heat mediated antigen retrieval with Tris-EDTA buffer (pH 9.0).



Immunohistochemical analysis of paraffin-embedded human liver cancer tissue slide using 13895-1-AP (D2HGDH Antibody) at dilution of 1:200 (under 40x lens). Heat mediated antigen retrieval with Tris-EDTA buffer (pH 9.0).



Immunofluorescent analysis of (-20°C Ethanol) fixed HepG2 cells using 13895-1-AP (D2HGDH antibody) at dilution of 1:100 and Alexa Fluor 488-conjugated AffiniPure Goat Anti-Rabbit IgG(H+L).