

À des fins de recherche uniquement

Anticorps Polyclonal de lapin anti-GTPBP4



Numéro de catalogue: 13897-1-AP

Phare

5 Publications

Informations de base

Numéro de catalogue:
13897-1-AP

Taille:
150ul, Concentration: 550 µg/ml by Nanodrop and 367 µg/ml by Bradford method using BSA as the standard;

Hôte:
Lapin

Isotype:
IgG

Immunogen Catalog Number:
AG4859

Numéro d'acquisition GenBank:
BC038975

Identification du gène (NCBI):
23560

Nom complet:
GTP binding protein 4

MW calculé
634 aa, 74 kDa

MW observés:
74 kDa

Méthode de purification:
Purification par affinité contre l'antigène

Dilutions recommandées:
WB 1:2000-1:8000
IP 0.5-4.0 ug for IP and 1:500-1:1000 for WB
IF 1:50-1:500

Applications

Applications testées:
IF, IP, WB, ELISA

Demandes citées:
IF, IHC, WB

Spécificité de l'espèce:
Humain, souris

Espèces citées:
Drosophile, Humain, souris

Contrôles positifs:

WB : cellules HeLa, cellules HepG2, tissu rénal humain, tissu testiculaire de souris

IP : tissu testiculaire de souris,

IF : cellules HeLa,

Informations générales

GTP-binding proteins are GTPases and function as molecular switches that can flip between two states: active, when GTP is bound, and inactive, when GDP is bound. 'Active' in this context usually means that the molecule acts as a signal to trigger other events in the cell. When an extracellular ligand binds to a G-protein-linked receptor, the receptor changes its conformation and switches on the trimeric G proteins that associate with it by causing them to eject their GDP and replace it with GTP. The switch is turned off when the G protein hydrolyzes its own bound GTP, converting it back to GDP. But before that occurs, the active protein has an opportunity to diffuse away from the receptor and deliver its message for a prolonged period to its downstream target.

Publications notables

Autrice	Pubmed ID	Journal	Application
Zhiqian Zhang	33134380	Biomed Res Int	WB
Haitao Yu	27720713	Biochem Biophys Res Commun	WB, IHC
Andrew J Finch	21536732	Genes Dev	WB

Stockage

Stockage:

Stocker à -20°C. Stable pendant un an après l'expédition.

Tampon de stockage:

PBS avec azoture de sodium à 0,02 % et glycérol à 50 % pH 7,3

L'aliquotage n'est pas nécessaire pour le stockage à -20C

*** Les 20ul contiennent 0,1% de BSA.

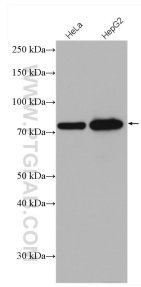
For technical support and original validation data for this product please contact:

T: 1 (888) 4PTGLAB (1-888-478-4522) (toll free in USA), or 1(312) 455-8498 (outside USA)

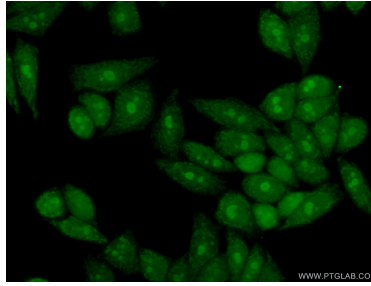
E: proteintech@ptglab.com
W: ptglab.com

This product is exclusively available under Proteintech Group brand and is not available to purchase from any other manufacturer.

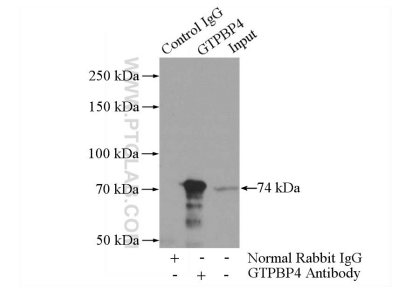
Données de validation sélectionnées



Various lysates were subjected to SDS PAGE followed by western blot with 13897-1-AP (GTPBP4 antibody) at dilution of 1:8000 incubated at room temperature for 1.5 hours.



Immunofluorescent analysis of (4% PFA) fixed HeLa cells using 13897-1-AP (GTPBP4 antibody) at dilution of 1:50 and Alexa Fluor 488-conjugated AffiniPure Goat Anti-Rabbit IgG(H+L).



IP Result of anti-GTPBP4 (IP:13897-1-AP, 4ug; Detection:13897-1-AP 1:800) with mouse testis tissue lysate 4000ug.