

À des fins de recherche uniquement

# Anticorps Polyclonal de lapin anti-KLHDC3



Numéro de catalogue: 13905-1-AP

## Informations de base

<b>Numéro de catalogue:</b> 13905-1-AP	<b>Numéro d'acquisition GenBank:</b> BC041793	<b>Méthode de purification:</b> Purification par affinité contre l'antigène
<b>Taille:</b> 150ul , Concentration: 520 µg/ml by Bradford method using BSA as the standard;	<b>Identification du gène (NCBI):</b> 116138	<b>Dilutions recommandées:</b> IHC 1:20-1:200 IF 1:20-1:200
<b>Hôte:</b> Lapin	<b>Nom complet:</b> kelch domain containing 3	
<b>Isotype:</b> IgG	<b>MW calculé:</b> 382 aa, 43 kDa	
<b>Immunogen Catalog Number:</b> AG4879		

## Applications

<b>Applications testées:</b> IF, IHC, ELISA	<b>Contrôles positifs:</b> IHC : tissu testiculaire humain, IF : cellules PC-3,
<b>Spécificité de l'espèce:</b> Humain	
<b>Remarque-IHC: il est suggéré de démasquer l'antigène avec un tampon de TE buffer pH 9.0; (*) À défaut, le démasquage de l'antigène peut être effectué avec un tampon citrate pH 6,0.</b>	

## Informations générales

The BTB (Broad-Complex, Tramtrack and Bric a brac) domain, also known as the POZ (Poxvirus and Zinc finger) domain, is an N-terminal homodimerization domain that contains multiple copies of kelch repeats and/or C2H2-type zinc fingers. Proteins that contain BTB domains are thought to be involved in transcriptional regulation via control of chromatin structure and function. The Kelch domain-containing protein 3 (KLHDC3), also designated PEAS, contains 5 Kelch repeats and may be involved in meiotic recombination process. The gene encoding KLHDC3 maps to chromosome 6, which contains around 1,200 genes within 170 million base pairs of sequence. Deletion of a portion of the q arm of chromosome 6 is associated with early onset intestinal cancer suggesting the presence of a cancer susceptibility locus. Porphyria cutanea tarda, Parkinson's disease, Stickler syndrome, 21-hydroxylase deficiency and maple syrup urine disease are also associated with genes on chromosome 6. KLHDC3 protein is mainly expressed in cytoplasm, also found in meiotic chromatin.

## Stockage

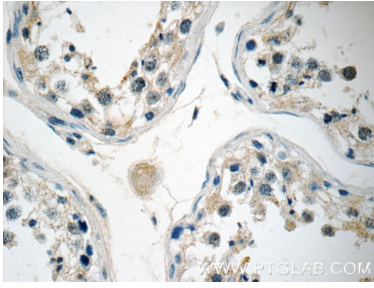
**Stockage:**  
Stocker à -20°C. Stable pendant un an après l'expédition.  
**Tampon de stockage:**  
PBS avec azotate de sodium à 0,02 % et glycérol à 50 % pH 7,3  
L'aliquoteage n'est pas nécessaire pour le stockage à -20C

\*\*\* Les 20ul contiennent 0,1% de BSA.

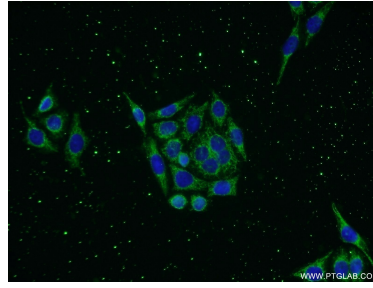
For technical support and original validation data for this product please contact:  
T: 1 (888) 4PTGLAB (1-888-478-4522) (toll free in USA), or 1(312) 455-8498 (outside USA)  
E: proteintech@ptglab.com  
W: ptglab.com

This product is exclusively available under Proteintech Group brand and is not available to purchase from any other manufacturer.

## Données de validation sélectionnées



Immunohistochemical analysis of paraffin-embedded human testis tissue slide using 13905-1-AP (KLHDC3 Antibody) at dilution of 1:50 (under 40x lens).



Immunofluorescent analysis of PC-3 cells using 13905-1-AP (KLHDC3 antibody) at dilution of 1:50 and Alexa Fluor 488-conjugated AffiniPure Goat Anti-Rabbit IgG(H+L).