

À des fins de recherche uniquement

Anticorps Polyclonal de lapin anti-MTM1



Numéro de catalogue: 13924-1-AP

Informations de base

Numéro de catalogue: 13924-1-AP	Numéro d'acquisition GenBank: BC030779	Méthode de purification: Purification par affinité contre l'antigène
Taille: 150ul , Concentration: 700 µg/ml by Nanodrop and 347 µg/ml by Bradford method using BSA as the standard;	Identification du gène (NCBI): 4534	Dilutions recommandées: WB 1:500-1:2000 IHC 1:50-1:500 IF 1:50-1:500
Hôte: Lapin	Nom complet: myotubularin 1	
Isotype: IgG	MW calculé: 70 kDa	
Immunogen Catalog Number: AG4940	MW observés: 65-70 kDa	

Applications

Applications testées: IF, IHC, WB, ELISA	Contrôles positifs: WB : cellules L02, cellules Jurkat IHC : tissu de muscle squelettique de rat, IF : cellules L02,
Spécificité de l'espèce: Humain, rat, souris	
Remarque-IHC: il est suggéré de démasquer l'antigène avec un tampon de TE buffer pH 9,0; (*) À défaut, 'le démasquage de l'antigène peut être 'effectué avec un tampon citrate pH 6,0.	

Informations générales

The MTM1(Myotubularin) gene encodes a protein that belongs to a family of putative tyrosine phosphatases. It is required for muscle cell differentiation. The protein is also a potent phosphatidylinositol 3-phosphate (PI3P) phosphatase, which is a 66 kDa ubiquitous protein that is found mutated in the X-linked genetic disorder myotubular myopathy(XLMTM).MTM1 could therefore act as a regulator of the highly active phosphoinositide (PI) metabolism in cells, where interconversions of the eight PIs described so far is controlled by a set of specific kinases and phosphatases(PMID:14660569). MTM1 has two isoforms with the molecular mass of 66kDa and 70 kDa.

Stockage

Stockage:
Stocker à -20°C. Stable pendant un an après l'expédition.
Tampon de stockage:
PBS avec azoture de sodium à 0,02 % et glycérol à 50 % pH 7,3
L'aliquotage n'est pas nécessaire pour le stockage à -20C

*** Les 20ul contiennent 0,1% de BSA.

For technical support and original validation data for this product please contact:

T: 1 (888) 4PTGLAB (1-888-478-4522) (toll free in USA), or 1(312) 455-8498 (outside USA)

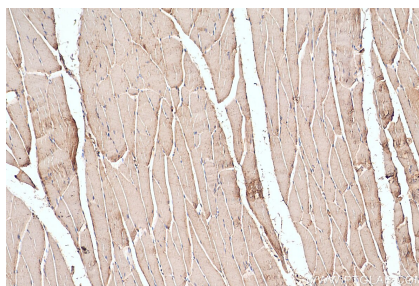
E: proteintech@ptglab.com
W: ptglab.com

This product is exclusively available under Proteintech Group brand and is not available to purchase from any other manufacturer.

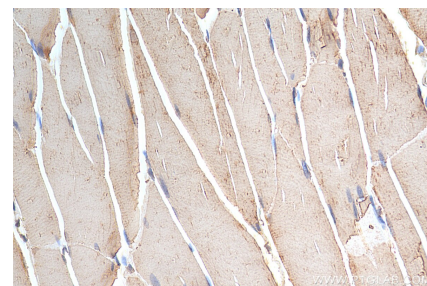
Données de validation sélectionnées



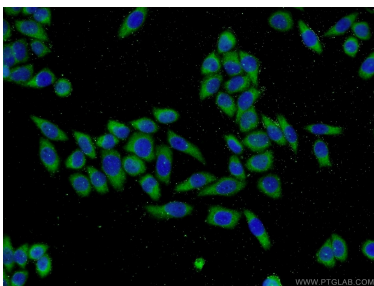
L02 cells were subjected to SDS PAGE followed by western blot with 13924-1-AP (MTM1 antibody) at dilution of 1:1000 incubated at room temperature for 1.5 hours.



Immunohistochemical analysis of paraffin-embedded rat skeletal muscle tissue slide using 13924-1-AP (MTM1 antibody) at dilution of 1:200 (under 10x lens). Heat mediated antigen retrieval with Tris-EDTA buffer (pH 9.0).



Immunohistochemical analysis of paraffin-embedded rat skeletal muscle tissue slide using 13924-1-AP (MTM1 antibody) at dilution of 1:200 (under 40x lens). Heat mediated antigen retrieval with Tris-EDTA buffer (pH 9.0).



Immunofluorescent analysis of L02 cells using 13924-1-AP (MTM1 antibody) at dilution of 1:50 and Alexa Fluor 488-conjugated AffiniPure Goat Anti-Rabbit IgG(H+L).