

À des fins de recherche uniquement

# Anticorps Polyclonal de lapin anti-DCX



Numéro de catalogue: 13925-1-AP

19 Publications

## Informations de base

Numéro de catalogue: 13925-1-AP	Numéro d'acquisition GenBank: BC027925	Méthode de purification: Purification par affinité contre l'antigène
Taille: 150ul, Concentration: 600 µg/ml by Nanodrop;	Identification du gène (NCBI): 1641	Dilutions recommandées: WB 1:2000-1:12000 IHC 1:50-1:500 IF 1:300-1:1200
Hôte: Lapin	Nom complet: doublecortin	
Isotype: IgG	MW calculé: 402 aa, 45 kDa	
Immunogen Catalog Number: AG4945	MW observés: 40 kDa	

## Applications

### Applications testées:

IF, IHC, WB, ELISA

### Demandes citées:

IF, WB

### Spécificité de l'espèce:

Humain, souris

### Espèces citées:

Humain, rat, souris, Hamster

**Remarque-IHC: il est suggéré de démasquer l'antigène avec un tampon de TE buffer pH 9,0; (\*) À défaut, le démasquage de l'antigène peut être effectué avec un tampon citrate pH 6,0.**

### Contrôles positifs:

WB : cellules SH-SY5Y, tissu cérébral humain foetal

IHC : tissu de gliome humain, tissu cérébral de rat, tissu cérébral de souris

IF : tissu cérébral de souris, cellules SH-SY5Y

## Informations générales

DCX (Doublecortin) is a microtubule-associated protein that is essential for normal brain development. DCX is expressed in migrating neurons throughout the central and peripheral nervous system during embryonic and postnatal development. Anti-DCX antibodies are widely used for detection of neurogenesis. It's also a common neuron marker since its expression is specific to neurons.

## Publications notables

Autrice	Pubmed ID	Journal	Application
Li Cheng	36212696	Front Cell Neurosci	IF
Jia Wang	36499306	Int J Mol Sci	WB,IF
Alison A Chomiak	35601919	iScience	WB

## Stockage

### Stockage:

Stocker à -20°C. Stable pendant un an après l'expédition.

### Tampon de stockage:

PBS avec azoture de sodium à 0,02 % et glycérol à 50 % pH 7,3

L'aliquotage n'est pas nécessaire pour le stockage à -20C

\*\*\* Les 20ul contiennent 0,1% de BSA.

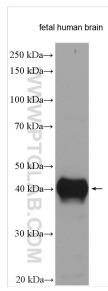
For technical support and original validation data for this product please contact:

T: 1 (888) 4PTGLAB (1-888-478-4522) (toll free in USA), or 1(312) 455-8498 (outside USA)

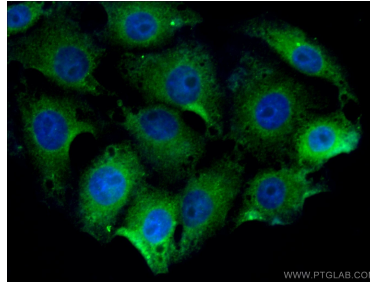
E: proteintech@ptglab.com  
W: ptglab.com

This product is exclusively available under Proteintech Group brand and is not available to purchase from any other manufacturer.

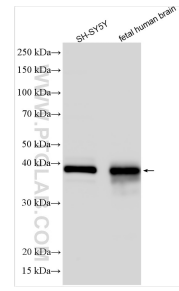
## Données de validation sélectionnées



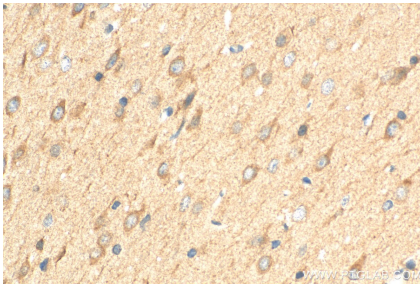
Fetal human brain lysates were subjected to SDS PAGE followed by western blot with 13925-1-AP (DCX antibody) at dilution of 1:1000 incubated at room temperature for 1.5 hours.



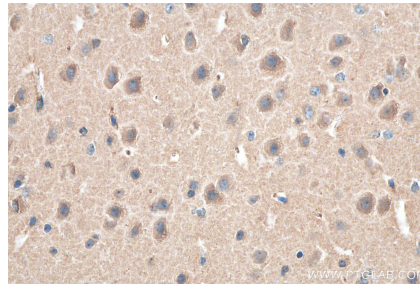
Immunofluorescent analysis of (-20°C Methanol) fixed SH-SY5Y cells using 13925-1-AP (DCX antibody) at dilution of 1:100 and CoraLite488-Conjugated AffiniPure Goat Anti-Rabbit IgG(H+L).



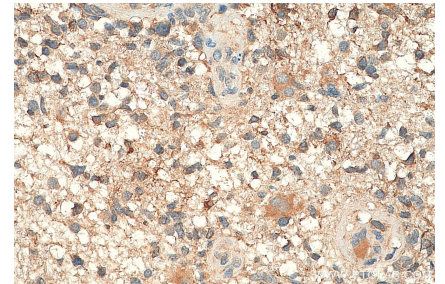
Various lysates were subjected to SDS PAGE followed by western blot with 13925-1-AP (DCX antibody) at dilution of 1:6000 incubated at room temperature for 1.5 hours.



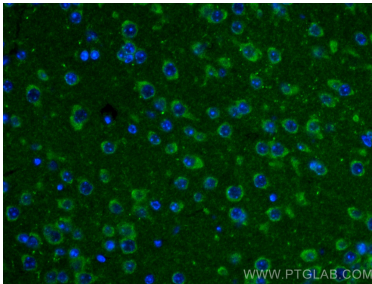
Immunohistochemical analysis of paraffin-embedded rat brain tissue slide using 13925-1-AP (DCX antibody) at dilution of 1:200 (under 40x lens). Heat mediated antigen retrieval with Tris-EDTA buffer (pH 9.0).



Immunohistochemical analysis of paraffin-embedded mouse brain tissue slide using 13925-1-AP (DCX antibody) at dilution of 1:200 (under 40x lens). Heat mediated antigen retrieval with Tris-EDTA buffer (pH 9.0).



Immunohistochemical analysis of paraffin-embedded human gliomas tissue slide using 13925-1-AP (DCX antibody) at dilution of 1:200 (under 40x lens). Heat mediated antigen retrieval with Tris-EDTA buffer (pH 9.0).



Immunofluorescent analysis of (4% PFA) fixed mouse brain tissue using DCX antibody (13925-1-AP) at dilution of 1:600 and CoraLite®488-Conjugated AffiniPure Goat Anti-Rabbit IgG(H+L).