

À des fins de recherche uniquement

# Anticorps Polyclonal de lapin anti-KIF3A



Numéro de catalogue: 13930-1-AP

Phare

12 Publications

## Informations de base

Numéro de catalogue:  
13930-1-AP

Taille:  
150ul, Concentration: 500 µg/ml by Nanodrop and 333 µg/ml by Bradford method using BSA as the standard;

Hôte:  
Lapin

Isotype:  
IgG

Immunogen Catalog Number:  
AG4954

Numéro d'acquisition GenBank:  
BC045542

Identification du gène (NCBI):  
11127

Nom complet:  
kinesin family member 3A

MW calculé  
80 kDa

MW observés:  
80 kDa

Méthode de purification:  
Purification par affinité contre l'antigène

Dilutions recommandées:  
WB 1:500-1:2000  
IP 0.5-4.0 ug for IP and 1:500-1:1000 for WB  
IHC 1:20-1:200

## Applications

Applications testées:  
IHC, IP, WB, ELISA

Demandes citées:  
IF, WB

Spécificité de l'espèce:  
Humain, souris

Espèces citées:  
Humain, souris

**Remarque-IHC: il est suggéré de démasquer l'antigène avec un tampon de TE buffer pH 9.0; (\*) A défaut, 'le démasquage de l'antigène peut être effectué avec un tampon citrate pH 6,0.**

Contrôles positifs:

WB : tissu cérébral de souris, tissu de cervelet de souris, tissu de cervelet humain

IP : tissu cérébral de souris,

IHC : tissu de gliome humain,

## Informations générales

KIF3A is a subunit of Kinesin II that is essential for intraflagellar transport (IFT). It functions as the anterograde motor to deliver ciliary components to the tip where the axoneme is assembled. Disruption of KIF3A has been reported to block mammalian ciliogenesis. Recently KIF3A has been found to localize to the mother centriole and is required for centrioles organization. This antibody specifically recognizes the endogenous KIF3A protein in mouse embryonic fibroblasts (MEFs) but not in KIF3A<sup>-/-</sup> lysate. (23386061)

## Publications notables

Autrice	Pubmed ID	Journal	Application
Molly M Wilson	34705506	Sci Adv	WB
Michal Pruski	31850339	Front Cell Dev Biol	WB
Vincent J Guen	29158396	Proc Natl Acad Sci U S A	WB

## Stockage

Stockage:

Stocker à -20°C. Stable pendant un an après l'expédition.

Tampon de stockage:

PBS avec azoture de sodium à 0,02 % et glycérol à 50 % pH 7,3

L'aliquotage n'est pas nécessaire pour le stockage à -20C

\*\*\* Les 20ul contiennent 0,1% de BSA.

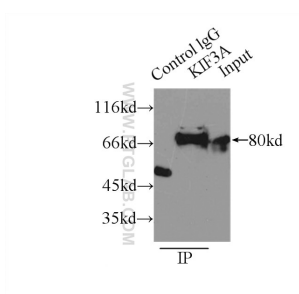
For technical support and original validation data for this product please contact:

T: 1 (888) 4PTGLAB (1-888-478-4522) (toll free in USA), or 1(312) 455-8498 (outside USA)

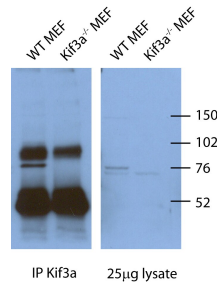
E: proteintech@ptglab.com  
W: ptglab.com

This product is exclusively available under Proteintech Group brand and is not available to purchase from any other manufacturer.

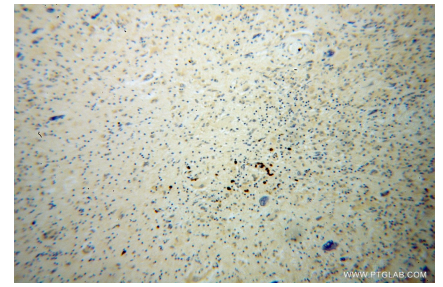
## Données de validation sélectionnées



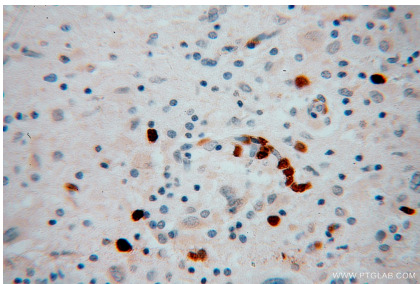
IP Result of anti-KIF3A (IP:13930-1-AP, 4ug; Detection:13930-1-AP 1:500) with mouse brain tissue lysate 8000ug.



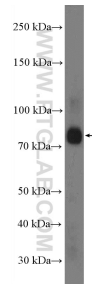
WB and IP result of the antibody anti-KIF3A (13930-1-AP) in mouse cell from Corbit, Kevin.



Immunohistochemical analysis of paraffin-embedded human gliomas using 13930-1-AP (KIF3A antibody) at dilution of 1:100 (under 10x lens).



Immunohistochemical analysis of paraffin-embedded human gliomas using 13930-1-AP (KIF3A antibody) at dilution of 1:100 (under 40x lens).



mouse brain tissue were subjected to SDS PAGE followed by western blot with 13930-1-AP (KIF3A Antibody) at dilution of 1:1000 incubated at room temperature for 1.5 hours.