

À des fins de recherche uniquement

Anticorps Polyclonal de lapin anti-GAPDHS



Numéro de catalogue: 13937-1-AP

14 Publications

Informations de base

Numéro de catalogue:

13937-1-AP

Taille:

150ul, Concentration: 600 µg/ml by Nanodrop;

Hôte:

Lapin

Isotype:

IgG

Immunogen Catalog Number:

AG4988

Numéro d'acquisition GenBank:

BC036373

Identification du gène (NCBI):

26330

Nom complet:

glyceraldehyde-3-phosphate dehydrogenase, spermatogenic

MW calculé

45 kDa

MW observés:

64 kDa

Méthode de purification:

Purification par affinité contre l'antigène

Dilutions recommandées:

WB 1:500-1:3000

Applications

Applications testées:

WB, ELISA

Demandes citées:

WB

Spécificité de l'espèce:

rat, souris

Espèces citées:

Humain, poulet, rat, souris

Contrôles positifs:

WB : tissu testiculaire de souris, tissu testiculaire de rat

Informations générales

GAPDHS (Glyceraldehyde-3-phosphate dehydrogenase, testis-specific) is also named as GAPD2, GAPDH2, GAPDS and belongs to the glyceraldehyde-3-phosphate dehydrogenase family. It may play an important role in regulating the switch between different pathways for energy production during spermiogenesis and in the spermatozoon. GAPDHS is a promising contraceptive target because it is specific to male germ cells, essential for sperm motility and male fertility, and well suited to pharmacological inhibition (PMID:20828617).

Publications notables

Autrice	Pubmed ID	Journal	Application
Jingya Gu	33029279	Oxid Med Cell Longev	WB
Zijun Peng	34741939	J Hazard Mater	WB
Guodong Liu	29344176	Oncol Lett	WB

Stockage

Stockage:

Stocker à -20°C. Stable pendant un an après l'expédition.

Tampon de stockage:

PBS avec azoture de sodium à 0,02 % et glycérol à 50 % pH 7,3

L'aliquotage n'est pas nécessaire pour le stockage à -20C

*** Les 20ul contiennent 0,1% de BSA.

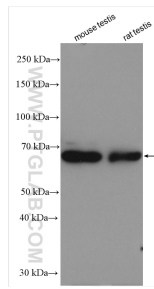
For technical support and original validation data for this product please contact:

T: 1 (888) 4PTGLAB (1-888-478-4522) (toll free in USA), or 1(312) 455-8498 (outside USA)

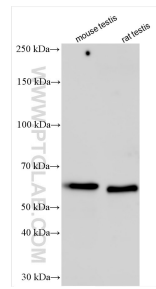
E: proteintech@ptglab.com
W: ptglab.com

This product is exclusively available under Proteintech Group brand and is not available to purchase from any other manufacturer.

Données de validation sélectionnées



Various lysates were subjected to SDS PAGE followed by western blot with 13937-1-AP (GAPDH antibody) at dilution of 1:1500 incubated at room temperature for 1.5 hours.



Various lysates were subjected to SDS PAGE followed by western blot with 13937-1-AP (GAPDH antibody) at dilution of 1:5000 incubated at room temperature for 1.5 hours.