

À des fins de recherche uniquement

# Anticorps Polyclonal de lapin anti-Calponin



Numéro de catalogue: 13938-1-AP

Phare

33 Publications

## Informations de base

Numéro de catalogue:

13938-1-AP

Taille:

150ul, Concentration: 500 µg/ml by Nanodrop;

Hôte:

Lapin

Isotype:

IgG

Immunogen Catalog Number:

AG4989

Numéro d'acquisition GenBank:

BC022015

Identification du gène (NCBI):

1264

Nom complet:

calponin 1, basic, smooth muscle

MW calculé

33 kDa

MW observés:

35 kDa

Méthode de purification:

Purification par affinité contre l'antigène

Dilutions recommandées:

WB 1:500-1:2000

IP 0.5-4.0 ug for IP and 1:500-1:2000 for WB

IHC 1:50-1:4000

IF 1:50-1:500

## Applications

Applications testées:

FC, IF, IHC, IP, WB, ELISA

Demandes citées:

IF, IHC, WB

Spécificité de l'espèce:

Humain, rat, souris

Espèces citées:

Humain, porc, rat, souris

**Remarque-IHC: il est suggéré de démasquer l'antigène avec un tampon de TE buffer pH 9,0; (\*) À défaut, le démasquage de l'antigène peut être effectué avec un tampon citrate pH 6,0.**

Contrôles positifs:

WB : tissu cardiaque de souris, tissu pulmonaire de souris

IP : tissu pulmonaire de souris,

IHC : tissu cardiaque humain, tissu cutané humain, tissu d'appendicite humaine, tissu de cancer du sein humain, tissu de tumeur ovarienne humaine, tissu d'hystéromyome humain, tissu vésical humain

IF : tissu cardiaque de souris, cellules C2C12

## Informations générales

Calponin is a family of actin filament-associated proteins which regulate smooth muscle cell contraction. Three isoforms of calponin exist: calponin h1 (CNN1), calponin h2 (CNN2) and calponin 3 (CNN3). CNN1 is a basic 34-kD protein specifically expressed in smooth muscle and a marker of smooth muscle cell differentiation. This antibody raised against the full-length of human CNN1 may cross-react with CNN2 and CNN3.

## Publications notables

Autrice	Pubmed ID	Journal	Application
Yang Yang	31523025	Acta Biomater	IF
Yan Yan	36068532	Reprod Biol Endocrinol	IHC
Meng Wang	30651790	Exp Ther Med	IF

## Stockage

Stockage:

Stocker à -20°C. Stable pendant un an après l'expédition.

Tampon de stockage:

PBS avec azoture de sodium à 0,02 % et glycérol à 50 % pH 7,3

L'aliquotage n'est pas nécessaire pour le stockage à -20C

\*\*\* Les 20ul contiennent 0,1% de BSA.

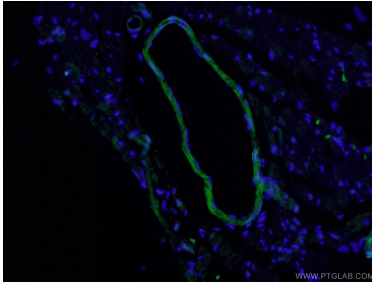
For technical support and original validation data for this product please contact:

T: 1 (888) 4PTGLAB (1-888-478-4522) (toll free in USA), or 1(312) 455-8498 (outside USA)

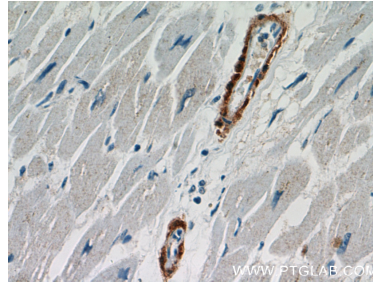
E: proteintech@ptglab.com  
W: ptglab.com

This product is exclusively available under Proteintech Group brand and is not available to purchase from any other manufacturer.

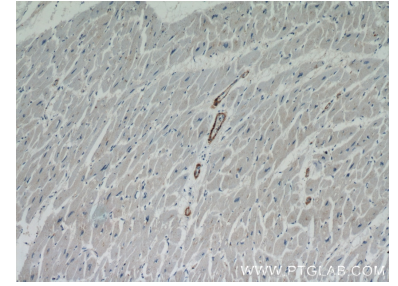
## Données de validation sélectionnées



Immunofluorescent analysis of (4% PFA) fixed mouse heart tissue using 13938-1-AP (Calponin antibody) at dilution of 1:50 and Alexa Fluor 488-conjugated AffiniPure Goat Anti-Rabbit IgG(H+L).



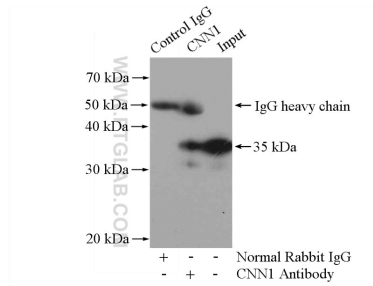
Immunohistochemical analysis of paraffin-embedded human heart using 13938-1-AP (CNN1 antibody) at dilution of 1:50 (under 40x lens).



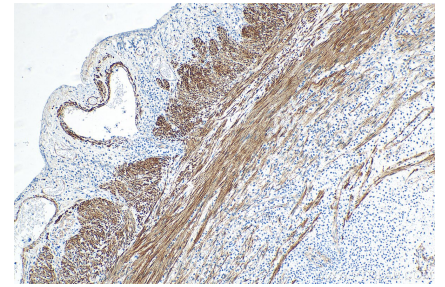
Immunohistochemical analysis of paraffin-embedded human heart using 13938-1-AP (CNN1 antibody) at dilution of 1:50 (under 10x lens).



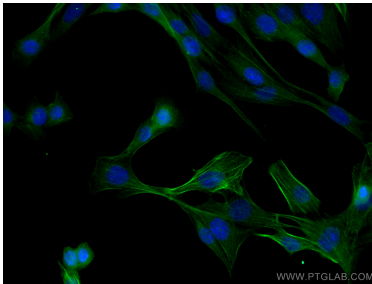
mouse heart tissue were subjected to SDS PAGE followed by western blot with 13938-1-AP (CNN1 antibody) at dilution of 1:1000 incubated at room temperature for 1.5 hours.



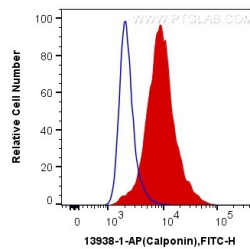
IP Result of anti-Calponin (IP:13938-1-AP, 4ug; Detection:13938-1-AP 1:1000) with mouse lung tissue lysate 2800ug.



Immunohistochemical analysis of paraffin-embedded human appendicitis tissue slide using 13938-1-AP (Calponin antibody) at dilution of 1:4000 (under 10x lens). Heat mediated antigen retrieval with Tris-EDTA buffer (pH 9.0).



Immunofluorescent analysis of (-20°C Methanol) fixed C2C12 cells using Calponin antibody (13938-1-AP) at dilution of 1:200 and CoraLite®488-Conjugated AffiniPure Goat Anti-Rabbit IgG(H+L).



1X10<sup>6</sup> C2C12 cells were intracellularly stained with 0.4 ug Anti-Human Calponin (13938-1-AP) and CoraLite®488-Conjugated AffiniPure Goat Anti-Rabbit IgG(H+L) at dilution 1:1000 (red), or 0.4 ug Control Antibody. Cells were fixed with 4% PFA and permeabilized with Flow Cytometry Perm Buffer (PF00011-C).