

À des fins de recherche uniquement

# Anticorps Polyclonal de lapin anti-ALDH1A2



Numéro de catalogue: 13951-1-AP

8 Publications

## Informations de base

Numéro de catalogue:

13951-1-AP

Taille:

150ul, Concentration: 550 µg/ml by Nanodrop and 353 µg/ml by Bradford method using BSA as the standard;

Hôte:

Lapin

Isotype:

IgG

Immunogen Catalog Number:

AG5062

Numéro d'acquisition GenBank:

BC030589

Identification du gène (NCBI):

8854

Nom complet:

aldehyde dehydrogenase 1 family, member A2

MW calculé

518 aa, 57 kDa

MW observés:

53-57 kDa

Méthode de purification:

Purification par affinité contre l'antigène

Dilutions recommandées:

WB 1:500-1:2000

IP 0.5-4.0 ug for IP and 1:200-1:1000 for WB

IHC 1:50-1:500

## Applications

Applications testées:

IHC, IP, WB, ELISA

Demandes citées:

IHC, WB

Spécificité de l'espèce:

Humain, rat, souris

Espèces citées:

Humain, rat, souris

**Remarque-IHC: il est suggéré de démasquer l'antigène avec un tampon de TE buffer pH 9.0; (\*) A défaut, le démasquage de l'antigène peut être effectué avec un tampon citrate pH 6,0.**

Contrôles positifs:

WB : cellules K-562, tissu testiculaire de souris

IP : tissu testiculaire de souris,

IHC : tissu testiculaire humain,

## Informations générales

ALDH1A2(aldehyde dehydrogenase family 1 member A2) is also named as RALDH2(retinal dehydrogenase 2) and belongs to the aldehyde dehydrogenase family. It is a cytosolic homotetramer(56.7 kDa subunits) exhibiting complex expression patterns throughout embryonic development. ALDH1A2 plays a role in retinoid metabolism during embryonic development where it is considered to be the major retinoic acid-synthesizing enzyme during early embryogenesis(PMID:20735668). Its expression is reduced in primary prostate tumors compared with normal prostate tissue suggested that it is normally expressed in the epithelial compartment of prostate tissue(PMID:16166285).It has 2 isoforms produced by alternative splicing.

## Publications notables

Autrice	Pubmed ID	Journal	Application
Bilbija Dusan D	23028599	PLoS One	WB
My-Thanh Beedle	30247516	Biol Reprod	IHC
Carlos J Diaz Osterman	31478830	Elife	WB

## Stockage

Stockage:

Stocker à -20°C. Stable pendant un an après l'expédition.

Tampon de stockage:

PBS avec azoture de sodium à 0,02 % et glycérol à 50 % pH 7,3

L'aliquoteage n'est pas nécessaire pour le stockage à -20C

\*\*\* Les 20ul contiennent 0,1% de BSA.

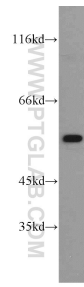
For technical support and original validation data for this product please contact:

T: 1 (888) 4PTGLAB (1-888-478-4522) (toll free in USA), or 1(312) 455-8498 (outside USA)

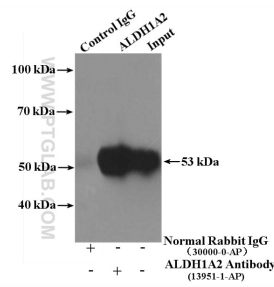
E: proteintech@ptglab.com  
W: ptglab.com

This product is exclusively available under Proteintech Group brand and is not available to purchase from any other manufacturer.

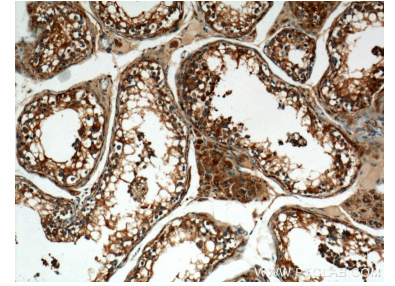
## Données de validation sélectionnées



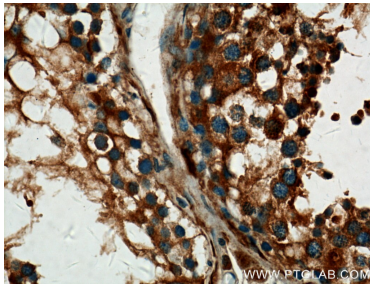
K-562 cells were subjected to SDS PAGE followed by western blot with 13951-1-AP (ALDH1A2 antibody) at dilution of 1:1000 incubated at room temperature for 1.5 hours.



IP Result of anti-ALDH1A2 (IP:13951-1-AP, 4ug; Detection:13951-1-AP 1:300) with mouse testis tissue lysate 4400ug.



Immunohistochemical analysis of paraffin-embedded human testis tissue slide using 13951-1-AP (ALDH1A2 Antibody) at dilution of 1:200 (under 10x lens).



Immunohistochemical analysis of paraffin-embedded human testis tissue slide using 13951-1-AP (ALDH1A2 Antibody) at dilution of 1:200 (under 40x lens).