

À des fins de recherche uniquement

Anticorps Polyclonal de lapin anti-ADAM2



Numéro de catalogue: 13952-1-AP

Informations de base

Numéro de catalogue:

13952-1-AP

Taille:

150ul , Concentration: 133 µg/ml by Bradford method using BSA as the standard;

Hôte:

Lapin

Isotype:

IgG

Immunogen Catalog Number:

AG5063

Numéro d'acquisition GenBank:

BC034957

Identification du gène (NCBI):

2515

Nom complet:

ADAM metallopeptidase domain 2

MW calculé

82 kDa

MW observés:

50-55 kDa, 65-75 kDa

Méthode de purification:

Purification par affinité contre l'antigène

Dilutions recommandées:

WB 1:500-1:2000

Applications

Applications testées:

WB, ELISA

Spécificité de l'espèce:

Humain, souris

Contrôles positifs:

WB : tissu testiculaire de souris, tissu testiculaire humain

Informations générales

The members of the ADAM (a disintegrin and metalloprotease) family are membrane-anchored multi-domain proteins that play prominent roles in male reproduction (PMID: 27341348). Fertilin, a heterodimeric protein complex composed of a(ADAM1) and b(ADAM2) subunits present on the sperm surface, has been believed to mediate adhesion and fusion between the sperm and egg plasma membranes. ADAM2-deficient mouse sperm is also defective in adhesion to and fusion with the egg membrane (PMID:16407235). It has 2 isoforms produced by alternative splicing and 5 glycosylation sites.

Stockage

Stockage:

Stocker à -20°C. Stable pendant un an après l'expédition.

Tampon de stockage:

PBS avec azoture de sodium à 0,02 % et glycérol à 50 % pH 7,3

L'aliquotage n'est pas nécessaire pour le stockage à -20C

*** Les 20ul contiennent 0,1% de BSA.

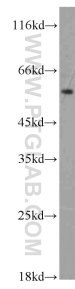
For technical support and original validation data for this product please contact:

T: 1 (888) 4PTGLAB (1-888-478-4522) (toll free in USA), or 1(312) 455-8498 (outside USA)

E: proteintech@ptglab.com
W: ptglab.com

This product is exclusively available under Proteintech Group brand and is not available to purchase from any other manufacturer.

Données de validation sélectionnées



mouse testis tissue were subjected to SDS PAGE followed by western blot with 13952-1-AP (ADAM2 antibody) at dilution of 1:1000 incubated at room temperature for 1.5 hours.