

À des fins de recherche uniquement

# Anticorps Polyclonal de lapin anti-CHEK2



Numéro de catalogue: 13954-1-AP

25 Publications

## Informations de base

<b>Numéro de catalogue:</b> 13954-1-AP	<b>Numéro d'acquisition GenBank:</b> BC004207	<b>Méthode de purification:</b> Purification par affinité contre l'antigène
<b>Taille:</b> 150ul , Concentration: 350 µg/ml by Nanodrop;	<b>Identification du gène (NCBI):</b> 11200	<b>Dilutions recommandées:</b> WB 1:500-1:1000
<b>Hôte:</b> Lapin	<b>Nom complet:</b> CHK2 checkpoint homolog (S. pombe)	IP 0.5-4.0 ug for IP and 1:500-1:1000 for WB
<b>Isotype:</b> IgG	<b>MW calculé:</b> 61 kDa	IF 1:50-1:500
<b>Immunogen Catalog Number:</b> AG5065	<b>MW observés:</b> 65 kDa	

## Applications

<b>Applications testées:</b> IF, IP, WB, ELISA	<b>Contrôles positifs:</b> WB : cellules HL-60, cellules HeLa
<b>Demandes citées:</b> WB	IP : cellules HL-60,
<b>Spécificité de l'espèce:</b> Humain, rat, souris	IF : cellules HepG2,
<b>Espèces citées:</b> Humain, rat, souris	

## Informations générales

Chk2(Checkpoint kinase 2) is also named as CDS1, CHEK2, RAD53 and belongs to the CHK2 subfamily. It is a protein kinase that is activated in response to DNA damage and involved in cell cycle arrest. It also mediates the induction of senescence in fibroblasts, but is dispensable for the induction of telomere dysfunction checkpoints at the stem and progenitor cell level(PMID:20577265). This protein can exist as a dimer (PMID:19782031). Active forms of CHEK2 devoid of phosphorylation at Thr-68 can form unstable dimers(PMID:12386164). Defects in CHEK2 is a cause of susceptibility to breast cancer (BC)(PMID:21618645). It has 12 isoforms produced by alternative splicing.

## Publications notables

Autrice	Pubmed ID	Journal	Application
Xin Wen	36249018	Front Oncol	WB
Yiti Zhang	36232630	Int J Mol Sci	WB
Yeunting Hsieh	32988875	Anticancer Res	WB

## Stockage

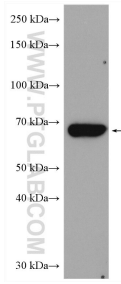
**Stockage:**  
Stocker à -20°C. Stable pendant un an après l'expédition.  
**Tampon de stockage:**  
PBS avec azoture de sodium à 0,02 % et glycérol à 50 % pH 7,3  
L'aliquotage n'est pas nécessaire pour le stockage à -20C

\*\*\* Les 20ul contiennent 0,1% de BSA.

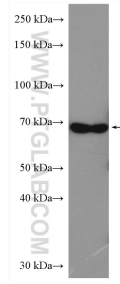
For technical support and original validation data for this product please contact:  
T: 1 (888) 4PTGLAB (1-888-478-4522) (toll free in USA), or 1(312) 455-8498 (outside USA)  
E: proteintech@ptglab.com  
W: ptglab.com

This product is exclusively available under Proteintech Group brand and is not available to purchase from any other manufacturer.

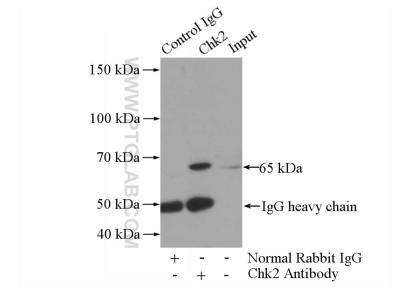
## Données de validation sélectionnées



HL-60 cells were subjected to SDS PAGE followed by western blot with 13954-1-AP (Chk2 antibody) at dilution of 1:600 incubated at room temperature for 1.5 hours.



HeLa cells were subjected to SDS PAGE followed by western blot with 13954-1-AP (Chk2 antibody) at dilution of 1:600 incubated at room temperature for 1.5 hours.



IP Result of anti-Chk2 (IP:13954-1-AP, 4ug; Detection:13954-1-AP 1:500) with HL-60 cells lysate 1600ug.



Immunofluorescent analysis of (4% PFA) fixed HepG2 cells using CHEK2 antibody (13954-1-AP) at dilution of 1:200 and CoralLite®488-Conjugated AffiniPure Goat Anti-Rabbit IgG(H+L), CL594-Phalloidin (red).