

À des fins de recherche uniquement

Anticorps Polyclonal de lapin anti-RFX4



Numéro de catalogue: 13971-1-AP

Informations de base

| | | |
|---|--|--|
| Numéro de catalogue: 13971-1-AP | Numéro d'acquisition GenBank: BC030644 | Méthode de purification: Purification par affinité contre l'antigène |
| Taille: 150ul , Concentration: 350 µg/ml by Nanodrop; | Identification du gène (NCBI): 5992 | Dilutions recommandées: WB 1:500-1:1000 |
| Hôte: Lapin | Nom complet: regulatory factor X, 4 (influences HLA class II expression) | |
| Isotype: IgG | MW calculé: 83 kDa | |
| Immunogen Catalog Number: AG5004 | MW observés: 84 kDa | |

Applications

| | |
|--|--|
| Applications testées: WB, ELISA | Contrôles positifs: WB : tissu cérébral de souris, tissu cérébral de rat |
| Spécificité de l'espèce: rat, souris | |

Informations générales

RFX4, also named as NYD-SP10, contains one RFX-type winged-helix DNA-binding domain and belongs to the RFX family. It may activate transcription by interacting directly with the X-box. The protein is structurally related to regulatory factors X1, X2, X3, and X5. It has been shown to interact with itself as well as with regulatory factors X2 and X3, but it does not interact with regulatory factor X1. This is a rabbit polyclonal antibody raised against the C terminus of human RFX4.

Stockage

Stockage:
Stocker à -20°C. Stable pendant un an après l'expédition.
Tampon de stockage:
PBS avec azoture de sodium à 0,02 % et glycérol à 50 % pH 7,3
L'aliquotage n'est pas nécessaire pour le stockage à -20C

***** Les 20ul contiennent 0,1% de BSA.**

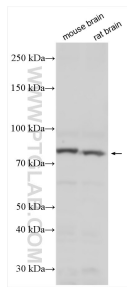
For technical support and original validation data for this product please contact:

T: 1 (888) 4PTGLAB (1-888-478-4522) (toll free in USA), or 1(312) 455-8498 (outside USA)

E: proteintech@ptglab.com
W: ptglab.com

This product is exclusively available under Proteintech Group brand and is not available to purchase from any other manufacturer.

Données de validation sélectionnées



Various lysates were subjected to SDS PAGE followed by western blot with 13971-1-AP (RFX4 antibody) at dilution of 1:600 incubated at room temperature for 1.5 hours.