

À des fins de recherche uniquement

Anticorps Polyclonal de lapin anti-TLK2



Numéro de catalogue: 13979-1-AP

1 Publications

Informations de base

Numéro de catalogue:

13979-1-AP

Taille:

150ul, Concentration: 450 µg/ml by Nanodrop and 173 µg/ml by Bradford method using BSA as the standard;

Hôte:

Lapin

Isotype:

IgG

Immunogen Catalog Number:

AG5022

Numéro d'acquisition GenBank:

BC044925

Identification du gène (NCBI):

11011

Nom complet:

tousled-like kinase 2

MW calculé

772 aa, 88 kDa

MW observés:

85 kDa

Méthode de purification:

Purification par affinité contre l'antigène

Dilutions recommandées:

WB 1:500-1:2000

IHC 1:50-1:500

IF 1:50-1:500

Applications

Applications testées:

IF, IHC, WB, ELISA

Demandes citées:

WB

Spécificité de l'espèce:

Humain, rat, souris

Espèces citées:

Humain

Remarque-IHC: il est suggéré de démasquer l'antigène avec un tampon de TE buffer pH 9,0; (*) A défaut, 'le démasquage de l'antigène peut être effectué avec un tampon citrate pH 6,0.

Contrôles positifs:

WB : cellules MCF-7, cellules HeLa

IHC : tissu de cancer du sein humain,

IF : cellules HeLa,

Informations générales

Tousled-like kinases (TLKs) are a family of serine/threonine kinases located in the nucleus that promote S-phase chromatin assembly and mitotic chromosome segregation. There are two genes in the TLK family-TLK1 and TLK2 (PMID: 14561777). Mutation in TLK2 are associated with an elevated risk of breast cancer (PMID: 27489360). Tousled-like kinase 2 (TLK2) is a key factor in glioblastoma that modulates SRC signaling, thereby driving tumor malignancy. TLK2 is commonly upregulated in glioblastoma, and such upregulation was associated with poor patient outcomes. TLK2 overexpression induced cell growth, migration, invasion, and epithelial-mesenchymal transition, and cell cycle arrest, while TLK2 knockdown had the opposite effect (PMID: 30207834). It can detect 3 isoforms of 88, 85 and 82 kDa.

Publications notables

Autrice	Pubmed ID	Journal	Application
Mingliang Wang	37542132	Cancer Gene Ther	WB

Stockage

Stockage:

Stocker à -20°C. Stable pendant un an après l'expédition.

Tampon de stockage:

PBS avec azoture de sodium à 0,02 % et glycérol à 50 % pH 7,3

L'aliquotage n'est pas nécessaire pour le stockage à -20C

*** Les 20ul contiennent 0,1% de BSA.

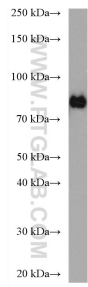
For technical support and original validation data for this product please contact:

T: 1 (888) 4PTGLAB (1-888-478-4522) (toll free in USA), or 1(312) 455-8498 (outside USA)

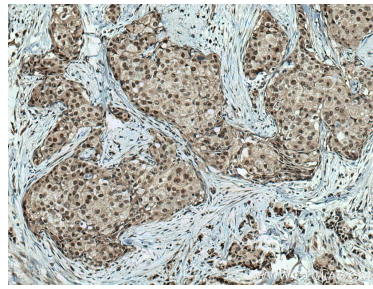
E: proteintech@ptglab.com
W: ptglab.com

This product is exclusively available under Proteintech Group brand and is not available to purchase from any other manufacturer.

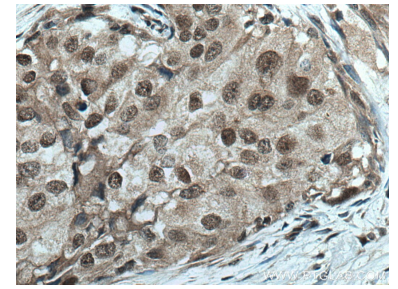
Données de validation sélectionnées



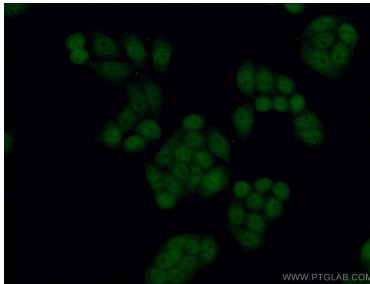
MCF-7 cells were subjected to SDS PAGE followed by western blot with 13979-1-AP (TLK2 antibody) at dilution of 1:1000 incubated at room temperature for 1.5 hours.



Immunohistochemical analysis of paraffin-embedded human breast cancer tissue slide using 13979-1-AP (TLK2 antibody) at dilution of 1:200 (under 10x lens). Heat mediated antigen retrieval with Tris-EDTA buffer (pH 9.0).



Immunohistochemical analysis of paraffin-embedded human breast cancer tissue slide using 13979-1-AP (TLK2 antibody) at dilution of 1:200 (under 40x lens). Heat mediated antigen retrieval with Tris-EDTA buffer (pH 9.0).



Immunofluorescent analysis of (4% PFA) fixed HeLa cells using 13979-1-AP (TLK2 antibody) at dilution of 1:100 and CoralLite488-Conjugated AffiniPure Goat Anti-Rabbit IgG(H+L).