

À des fins de recherche uniquement

Anticorps Polyclonal de lapin anti-IGFBP1



Numéro de catalogue: 13981-1-AP

9 Publications

Informations de base

Numéro de catalogue:

13981-1-AP

Taille:

150ul, Concentration: 850 µg/ml by Nanodrop and 433 µg/ml by Bradford method using BSA as the standard;

Hôte:

Lapin

Isotype:

IgG

Immunogen Catalog Number:

AG5026

Numéro d'acquisition GenBank:

BC057806

Identification du gène (NCBI):

3484

Nom complet:

IGF binding protein 1

MW calculé

28 kDa

MW observés:

28-35 kDa

Méthode de purification:

Purification par affinité contre l'antigène

Dilutions recommandées:

WB 1:5000-1:50000

Applications

Applications testées:

WB, ELISA

Demandes citées:

IHC, WB

Spécificité de l'espèce:

Humain

Espèces citées:

Humain

Contrôles positifs:

WB : cellules HepG2, placenta humain

Informations générales

IGF-binding proteins (IGFBPs) family contains members like IGFBP-1, -2, -3, -4, -5 and -6. IGFBPs prolong the half-life of the IGFs and have been shown to either inhibit or stimulate the growth promoting effects of the IGFs on cell culture. They alter the interaction of IGFs with their cell surface receptors. IGF-I physically interacts with IGFBP-1 and that IGFBP-1 also binds to an integrin receptor, but the effect of IGFBP-1 on cell migration may be independent of IGF-I and is probably mediated through the alpha 5 beta 1 integrin. Transgenic mice models demonstrated that IGFBPs played important roles in the pathogenesis of obesity and INS resistance. Studies conducted in humans demonstrated the close relation between IGFBPs and the components of the metabolic syndrome.

Publications notables

Autrice	Pubmed ID	Journal	Application
Min Jin	27628217	Biol Reprod	WB
Hongfei Zhou	36115171	Phytomedicine	WB
Tao Feng	25310700	Mol Med Rep	

Stockage

Stockage:

Stocker à -20°C. Stable pendant un an après l'expédition.

Tampon de stockage:

PBS avec azoture de sodium à 0,02 % et glycérol à 50 % pH 7,3

L'aliquotage n'est pas nécessaire pour le stockage à -20C

*** Les 20ul contiennent 0,1% de BSA.

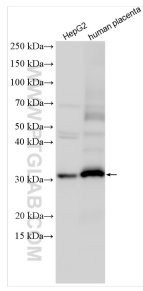
For technical support and original validation data for this product please contact:

T: 1 (888) 4PTGLAB (1-888-478-4522) (toll free in USA), or 1(312) 455-8498 (outside USA)

E: proteintech@ptglab.com
W: ptglab.com

This product is exclusively available under Proteintech Group brand and is not available to purchase from any other manufacturer.

Données de validation sélectionnées



Various lysates were subjected to SDS PAGE followed by western blot with 13981-1-AP (IGFBP1 antibody) at dilution of 1:12000 incubated at room temperature for 1.5 hours.