

À des fins de recherche uniquement

Anticorps Polyclonal de lapin anti-Cryptochrome 2



Numéro de catalogue: 13997-1-AP

Phare

24 Publications

Informations de base

Numéro de catalogue:

13997-1-AP

Taille:

150ul, Concentration: 650 µg/ml by Nanodrop and 400 µg/ml by Bradford method using BSA as the standard;

Hôte:

Lapin

Isotype:

IgG

Immunogen Catalog Number:

AG5085

Numéro d'acquisition GenBank:

BC041814

Identification du gène (NCBI):

1408

Nom complet:

cryptochrome 2 (photolyase-like)

MW calculé

593 aa, 67 kDa

MW observés:

65-70 kDa

Méthode de purification:

Purification par affinité contre l'antigène

Dilutions recommandées:

WB 1:500-1:1000

IP 0.5-4.0 ug for IP and 1:200-1:1000 for WB

IHC 1:50-1:500

IF 1:50-1:500

Applications

Applications testées:

IF, IHC, IP, WB, ELISA

Demandes citées:

IF, WB

Spécificité de l'espèce:

Humain, rat, souris

Espèces citées:

Humain, rat, souris

Remarque-IHC: il est suggéré de démasquer l'antigène avec un tampon de TE buffer pH 9,0; (*) A défaut, 'le démasquage de l'antigène peut être effectué avec un tampon citrate pH 6,0.

Contrôles positifs:

WB : tissu cérébral de souris, cellules Y79, tissu cérébral de rat

IP : tissu cérébral de souris,

IHC : tissu cérébral de souris,

IF : cellules SH-SY5Y,

Informations générales

Cryptochrome circadian clock 2 (CRY2) is a flavin adenine dinucleotide-binding protein that is a key component of the circadian core oscillator complex, which regulates the circadian clock. Loss of CRY2 stabilizes c-MYC and enhances cellular transformation. CRY2 can function as a co-factor for the SCF substrate adaptor FBXL3 (PMID: 27840026). CRY2 has two isoform with MW of 60 and 67 kDa. This antibody can recognize CRY1 and CRY2 due to the high homology.

Publications notables

Autrice	Pubmed ID	Journal	Application
Juan M Barajas	34599880	Am J Pathol	WB
Wen-Ya Huang	28986813	Chin J Integr Med	WB
Guohua Ji	31585206	Free Radic Biol Med	WB

Stockage

Stockage:

Stocker à -20°C. Stable pendant un an après l'expédition.

Tampon de stockage:

PBS avec azoture de sodium à 0,02 % et glycérol à 50 % pH 7,3

L'aliquotage n'est pas nécessaire pour le stockage à -20C

*** Les 20ul contiennent 0,1% de BSA.

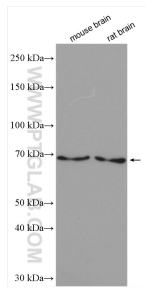
For technical support and original validation data for this product please contact:

T: 1 (888) 4PTGLAB (1-888-478-4522) (toll free in USA), or 1(312) 455-8498 (outside USA)

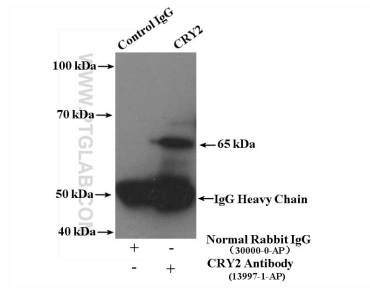
E: proteintech@ptglab.com
W: ptglab.com

This product is exclusively available under Proteintech Group brand and is not available to purchase from any other manufacturer.

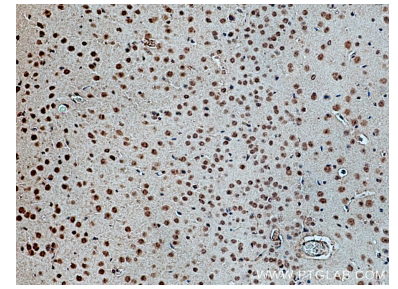
Données de validation sélectionnées



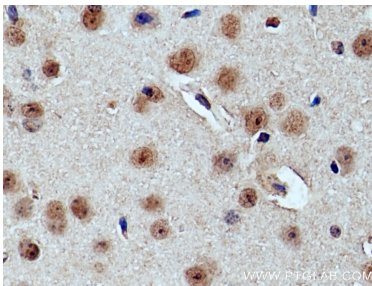
Various lysates were subjected to SDS PAGE followed by western blot with 13997-1-AP (Cryptochrome 2 antibody) at dilution of 1:800 incubated at room temperature for 1.5 hours.



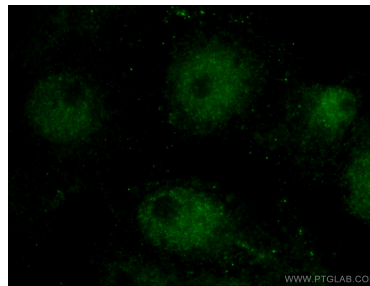
IP Result of anti-Cryptochrome 2 (IP:13997-1-AP, 4ug; Detection:13997-1-AP 1:300) with mouse brain tissue lysate 5200ug.



Immunohistochemical analysis of paraffin-embedded mouse brain tissue slide using 13997-1-AP (Cryptochrome 2 antibody) at dilution of 1:200 (under 10x lens). Heat mediated antigen retrieval with Tris-EDTA buffer (pH 9.0).



Immunohistochemical analysis of paraffin-embedded mouse brain tissue slide using 13997-1-AP (Cryptochrome 2 antibody) at dilution of 1:200 (under 40x lens). Heat mediated antigen retrieval with Tris-EDTA buffer (pH 9.0).



Immunofluorescent analysis of (10% Formaldehyde) fixed SH-SY5Y cells using 13997-1-AP (Cryptochrome 2 antibody) at dilution of 1:50 and Alexa Fluor 488-conjugated AffiniPure Goat Anti-Rabbit IgG(H+L).