

À des fins de recherche uniquement

Anticorps Polyclonal de lapin anti-SOX6



Numéro de catalogue: 14010-1-AP

6 Publications

Informations de base

Numéro de catalogue: 14010-1-AP	Numéro d'acquisition GenBank: BC047064	Méthode de purification: Purification par affinité contre l'antigène
Taille: 150ul , Concentration: 600 µg/ml by Nanodrop and 227 µg/ml by Bradford method using BSA as the standard;	Identification du gène (NCBI): 55553	Dilutions recommandées: WB 1:1000-1:4000
Hôte: Lapin	Nom complet: SRY (sex determining region Y)-box 6	
Isotype: IgG	MW calculé: 92 kDa	
Immunogen Catalog Number: AG5111	MW observés: 90 kDa	

Applications

Applications testées: WB, ELISA	Contrôles positifs: WB : cellules U-251, cellules C6, cellules Jurkat
Demandes citées: IF, WB	
Spécificité de l'espèce: Humain, rat	
Espèces citées: Humain, souris	

Informations générales

The Sex-determining Region Y (SRY)-related high-mobilitygroup box 6 (SOX6) is a transcription factor that was discovered in 1990s while searching for Sry-related genes. SOX6 belongs to the subfamily D of SOX protein and can recognize the conserved sequence of "(A/T)(A/T)CAA(A/ T)G" within the transcriptional regulation region of the target gene with its HMG domain. Sox6 contains DNA binding domain and binds to the minor groove of DNA. The ability of SOX6 to interact with different proteins at different places and times, makes it an intricate protein with roles in multiple processes. SOX6 has been implicated in diabetic nephropathy, adipogenesis, cardiomyopathy, inflammatory bowel disease, and cancer. (PMID: 33230925)

Publications notables

Autrice	Pubmed ID	Journal	Application
Zhen-Huan Jiang	31746345	Int J Mol Med	WB
Shi Shu	36181383	Nephrology (Carlton)	WB
Yuki Miyamoto	27876794	Nat Commun	WB

Stockage

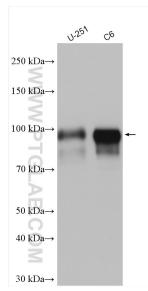
Stockage:
Stocker à -20°C. Stable pendant un an après l'expédition.
Tampon de stockage:
PBS avec azoture de sodium à 0,02 % et glycérol à 50 % pH 7,3
L'aliquotage n'est pas nécessaire pour le stockage à -20C

*** Les 20ul contiennent 0,1% de BSA.

For technical support and original validation data for this product please contact:
T: 1 (888) 4PTGLAB (1-888-478-4522) (toll free in USA), or 1(312) 455-8498 (outside USA)
E: proteintech@ptglab.com
W: ptglab.com

This product is exclusively available under Proteintech Group brand and is not available to purchase from any other manufacturer.

Données de validation sélectionnées



Various lysates were subjected to SDS PAGE followed by western blot with 14010-1-AP (SOX6 antibody) at dilution of 1:2000 incubated at room temperature for 1.5 hours.