

À des fins de recherche uniquement

# Anticorps Polyclonal de lapin anti-STAG1



Numéro de catalogue: 14015-1-AP

2 Publications

## Informations de base

Numéro de catalogue:

14015-1-AP

Taille:

150ul, Concentration: 300 µg/ml by Nanodrop and 327 µg/ml by Bradford method using BSA as the standard;

Hôte:

Lapin

Isotype:

IgG

Immunogen Catalog Number:

AG5123

Numéro d'acquisition GenBank:

BC064699

Identification du gène (NCBI):

10274

Nom complet:

stromal antigen 1

MW calculé

144 kDa

MW observés:

155 kDa

Méthode de purification:

Purification par affinité contre l'antigène

Dilutions recommandées:

WB 1:500-1:3000

IF 1:50-1:500

## Applications

Applications testées:

IF, WB, ELISA

Demandes citées:

WB

Spécificité de l'espèce:

Humain, rat, souris

Espèces citées:

Humain, rat

Contrôles positifs:

WB : cellules HEK-293T, cellules HeLa, cellules Jurkat, cellules MCF-7, cellules NIH/3T3, cellules Raji, tissu cardiaque humain

IF : cellules HeLa,

## Informations générales

STAG1, also named as SCC3 homolog 1, is a 1258 amino acid protein, which belongs to the SCC3 family. STAG1 interacts directly with RAD21 in cohesin complex and localizes in nucleus. STAG1 is a Component of cohesin complex, which is required for the cohesion of sister chromatids after DNA replication. The cohesin complex apparently forms a large proteinaceous ring within which sister chromatids can be trapped. At anaphase, the complex is cleaved and dissociates from chromatin, allowing sister chromatids to segregate. The cohesin complex may also play a role in spindle pole assembly during mitosis. The calculate molecular weight of STAG1 is 144 kDa, but modified STAG1 is about 145-150 kDa.

## Publications notables

Autrice	Pubmed ID	Journal	Application
Gaoyang Chen	35361779	Bone Res	WB
Ena Oreskovic	35149558	Proc Natl Acad Sci U S A	WB

## Stockage

Stockage:

Stocker à -20°C. Stable pendant un an après l'expédition.

Tampon de stockage:

PBS avec azoture de sodium à 0,02 % et glycérol à 50 % pH 7,3

L'aliquotage n'est pas nécessaire pour le stockage à -20C

\*\*\* Les 20ul contiennent 0,1% de BSA.

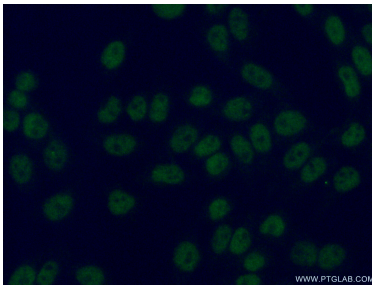
For technical support and original validation data for this product please contact:

T: 1 (888) 4PTGLAB (1-888-478-4522) (toll free in USA), or 1(312) 455-8498 (outside USA)

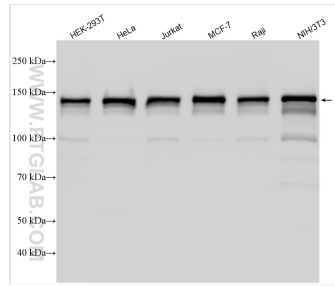
E: proteintech@ptglab.com  
W: ptglab.com

This product is exclusively available under Proteintech Group brand and is not available to purchase from any other manufacturer.

## Données de validation sélectionnées



Immunofluorescent analysis of (4% PFA) fixed HeLa cells using 14015-1-AP (STAG1 antibody) at dilution of 1:50 and Alexa Fluor 488-conjugated AffiniPure Goat Anti-Rabbit IgG(H+L).



Various lysates were subjected to SDS PAGE followed by western blot with 14015-1-AP (STAG1 antibody) at dilution of 1:1500 incubated at room temperature for 1.5 hours.