

À des fins de recherche uniquement

Anticorps Polyclonal de lapin anti-ESRRG



Numéro de catalogue: 14017-1-AP

Phare

3 Publications

Informations de base

Numéro de catalogue:

14017-1-AP

Taille:

150ul, Concentration: 600 µg/ml by Nanodrop and 353 µg/ml by Bradford method using BSA as the standard;

Hôte:

Lapin

Isotype:

IgG

Immunogen Catalog Number:

AG5127

Numéro d'acquisition GenBank:

BC064700

Identification du gène (NCBI):

2104

Nom complet:

estrogen-related receptor gamma

MW calculé

51 kDa

MW observés:

51 kDa

Méthode de purification:

Purification par affinité contre l'antigène

Dilutions recommandées:

WB 1:1000-1:4000

Applications

Applications testées:

WB, ELISA

Demandes citées:

IF, IHC, WB

Spécificité de l'espèce:

Humain, rat, souris

Espèces citées:

Humain, souris

Contrôles positifs:

WB : tissu splénique humain, tissu rénal humain

Informations générales

Estrogen-related receptor gamma (ERR-gamma), also known as NR3B3 (nuclear receptor subfamily 3, group B, member 3), is a member of nuclear hormone receptor family of steroid hormone receptors. As an orphan nuclear receptor, it binds specifically to an estrogen response element and activates reporter genes controlled by estrogen response elements. It behaves as a constitutive activator of transcription. 4-hydroxytamoxifen and diethylstilbestrol may act as inverse agonists and deactivate ESRRG. It also seems to be the target of bisphenol A. This antibody is a rabbit polyclonal antibody raised against residues near the C terminus of human ESRRG.

Publications notables

Autrice	Pubmed ID	Journal	Application
Wei Gong	27417234	Int J Biochem Cell Biol	WB
Olubankole Aladesuyi Arogundade	33588953	Acta Neuropathol Commun	IHC, IF
Hye-Young Nam	30131446	Mol Cancer Res	WB

Stockage

Stockage:

Stocker à -20°C. Stable pendant un an après l'expédition.

Tampon de stockage:

PBS avec azoture de sodium à 0,02 % et glycérol à 50 % pH 7,3

L'aliquotage n'est pas nécessaire pour le stockage à -20C

*** Les 20ul contiennent 0,1% de BSA.

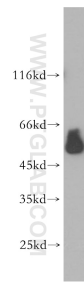
For technical support and original validation data for this product please contact:

T: 1 (888) 4PTGLAB (1-888-478-4522) (toll free in USA), or 1(312) 455-8498 (outside USA)

E: proteintech@ptglab.com
W: ptglab.com

This product is exclusively available under Proteintech Group brand and is not available to purchase from any other manufacturer.

Données de validation sélectionnées



human spleen tissue were subjected to SDS PAGE followed by western blot with 14017-1-AP (ESRRG antibody) at dilution of 1:1000 incubated at room temperature for 1.5 hours.