

À des fins de recherche uniquement

# Anticorps Polyclonal de lapin anti-AADACL1



Numéro de catalogue: 14021-1-AP

1 Publications

## Informations de base

Numéro de catalogue:

14021-1-AP

Taille:

150ul, Concentration: 240 µg/ml by Nanodrop and 180 µg/ml by Bradford method using BSA as the standard;

Hôte:

Lapin

Isotype:

IgG

Immunogen Catalog Number:

AG5136

Numéro d'acquisition GenBank:

BC047588

Identification du gène (NCBI):

57552

Nom complet:

arylacetamide deacetylase-like 1

MW calculé

46 kDa

MW observés:

40-50 kDa

Méthode de purification:

Purification par affinité contre l'antigène

Dilutions recommandées:

WB 1:1000-1:4000

IP 0.5-4.0 µg for IP and 1:500-1:1000 for WB

IHC 1:20-1:200

IF 1:10-1:100

## Applications

Applications testées:

IF, IHC, IP, WB, ELISA

Demandes citées:

WB

Spécificité de l'espèce:

Humain, rat, souris

Espèces citées:

rat

Contrôles positifs:

WB : cellules PC-3,

IP : cellules COLO 320,

IHC : tissu cérébral humain, tissu cutané humain, tissu ovarien humain, tissu pulmonaire humain, tissu rénal humain, tissu splénique humain

IF : cellules COLO 320,

**Remarque-IHC: il est suggéré de démasquer l'antigène avec un tampon de TE buffer pH 9,0; (\*) A défaut, le démasquage de l'antigène peut être effectué avec un tampon citrate pH 6,0.**

## Informations générales

AADACL1 (Arylacetamide deacetylase-like 1) is also named as NCEH1, KIAA1363 and belongs to the 'GDYG' lipolytic enzyme family. The transmembrane enzyme, AADACL1, controls the production of the monoalkylglycerol ether (MAGE) class of NELS in cancer cells and acts as a 2-acetyl MAGE hydrolase and is likely the principal source for this activity in tumor cells (PMID:21513884). The full length protein has three glycosylation sites and can be N-glycosylated (PMID:19159218). It has 3 isoforms produced by alternative splicing.

## Publications notables

Autrice	Pubmed ID	Journal	Application
Jingyi Duan	32240813	J Proteomics	WB

## Stockage

Stockage:

Stocker à -20°C. Stable pendant un an après l'expédition.

Tampon de stockage:

PBS avec azoture de sodium à 0,02 % et glycérol à 50 % pH 7,3

L'aliquotage n'est pas nécessaire pour le stockage à -20C

\*\*\* Les 20ul contiennent 0,1% de BSA.

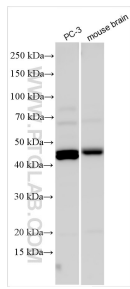
For technical support and original validation data for this product please contact:

T: 1 (888) 4PTGLAB (1-888-478-4522) (toll free in USA), or 1(312) 455-8498 (outside USA)

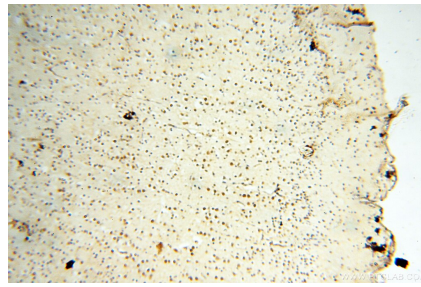
E: proteintech@ptglab.com  
W: ptglab.com

This product is exclusively available under Proteintech Group brand and is not available to purchase from any other manufacturer.

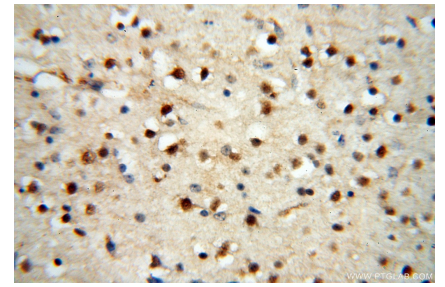
## Données de validation sélectionnées



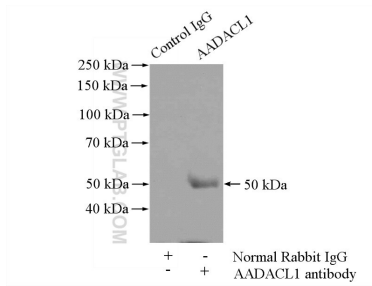
Various lysates were subjected to SDS PAGE followed by western blot with 14021-1-AP (AADACL1 antibody) at dilution of 1:2000 incubated at room temperature for 1.5 hours.



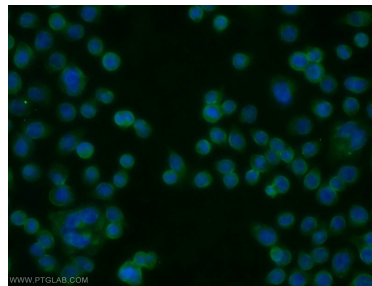
Immunohistochemical analysis of paraffin-embedded human brain using 14021-1-AP (AADACL1 antibody) at dilution of 1:50 (under 10x lens).



Immunohistochemical analysis of paraffin-embedded human brain using 14021-1-AP (AADACL1 antibody) at dilution of 1:50 (under 40x lens).



IP Result of anti-AADACL1 (IP:14021-1-AP, 4ug; Detection:14021-1-AP 1:500) with COLO 320 cells lysate 400ug.



Immunofluorescent analysis of COLO 320 cells using 14021-1-AP (AADACL1 antibody) at dilution of 1:25 and Alexa Fluor 488-conjugated AffiniPure Goat Anti-Rabbit IgG(H+L).