

À des fins de recherche uniquement

Anticorps Polyclonal de lapin anti-SOCS3



Numéro de catalogue: 14025-1-AP

Phare

54 Publications

Informations de base

Numéro de catalogue:

14025-1-AP

Taille:

150ul, Concentration: 700 µg/ml by Nanodrop;

Hôte:

Lapin

Isotype:

IgG

Immunogen Catalog Number:

AG5170

Numéro d'acquisition GenBank:

BC060858

Identification du gène (NCBI):

9021

Nom complet:

suppressor of cytokine signaling 3

MW calculé

25 kDa

MW observés:

25-30 kDa

Méthode de purification:

Purification par affinité contre l'antigène

Dilutions recommandées:

WB 1:1000-1:4000

IP 0.5-4.0 µg for IP and 1:500-1:1000 for WB

Applications

Applications testées:

IP, WB, ELISA

Demandes citées:

CoIP, IF, IHC, IP, WB

Spécificité de l'espèce:

Humain

Espèces citées:

Humain, porc, poulet, rat, souris

Contrôles positifs:

WB : cellules HeLa,

IP : cellules K-562,

Informations générales

The suppressor of cytokine signaling (SOCS) family proteins are negative feedback system that inhibits cytokine signal transduction. One of the SOCS family, SOCS3, also named CIS3 and SSI3, is involved in inhibition of JAK/STAT pathway which regulates IL-6 signaling in vivo. SOCS3 can be rapidly trigger by a number of factors including interleukins, IFN-gamma and TNF-alpha. Pathology such as inflammatory response, wound repair and obesity and so on have been linked to SOCS3. Observed MW of SOCS3 is from 22-30 kDa (PMID: 24827536, PMID: 26260587, PMID: 26797799), consistent with the result of Catalog#14025-1-AP.

Publications notables

Autrice	Pubmed ID	Journal	Application
Kai Yang	34586888	Int J Immunopathol Pharmacol	IHC
Pilar Argente-Arízón	29077836	Endocrinology	WB
Orawan Wonganan	29031523	Toxicol Appl Pharmacol	WB

Stockage

Stockage:

Stocker à -20°C. Stable pendant un an après l'expédition.

Tampon de stockage:

PBS avec azoture de sodium à 0,02 % et glycérol à 50 % pH 7,3

L'aliquotage n'est pas nécessaire pour le stockage à -20C

*** Les 20ul contiennent 0,1% de BSA.

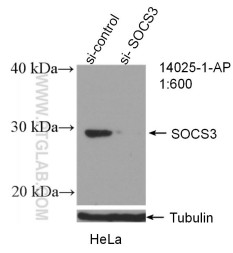
For technical support and original validation data for this product please contact:

T: 1 (888) 4PTGLAB (1-888-478-4522) (toll free in USA), or 1(312) 455-8498 (outside USA)

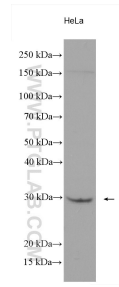
E: proteintech@ptglab.com
W: ptglab.com

This product is exclusively available under Proteintech Group brand and is not available to purchase from any other manufacturer.

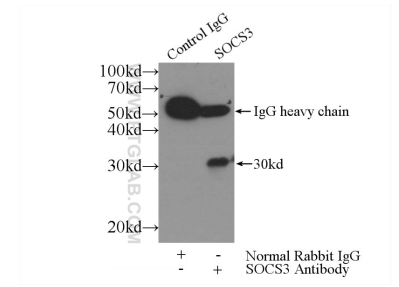
Données de validation sélectionnées



WB result of SOCS3 antibody (14025-1-AP; 1:600; incubated at room temperature for 1.5 hours) with sh-Control and sh-SOCS3 transfected HeLa cells.



HeLa cells were subjected to SDS PAGE followed by western blot with 14025-1-AP (SOCS3 antibody) at dilution of 1:2000 incubated at room temperature for 1.5 hours.



IP Result of anti-SOCS3 (IP:14025-1-AP, 4ug; Detection:14025-1-AP 1:500) with K-562 cells lysate 1720ug.