

À des fins de recherche uniquement

# Anticorps Polyclonal de lapin anti-ROD1



Numéro de catalogue: 14027-1-AP

Phare

5 Publications

## Informations de base

<b>Numéro de catalogue:</b> 14027-1-AP	<b>Numéro d'acquisition GenBank:</b> BC044585	<b>Méthode de purification:</b> Purification par affinité contre l'antigène
<b>Taille:</b> 150ul , Concentration: 700 µg/ml by Nanodrop;	<b>Identification du gène (NCBI):</b> 9991	<b>Dilutions recommandées:</b> WB 1:2000-1:12000 IHC 1:20-1:200
<b>Hôte:</b> Lapin	<b>Nom complet:</b> ROD1 regulator of differentiation 1 (S. pombe)	
<b>Isotype:</b> IgG	<b>MW calculé:</b> 60 kDa	
<b>Immunogen Catalog Number:</b> AG5172	<b>MW observés:</b> 50 kDa	

## Applications

**Applications testées:**  
IHC, WB, ELISA

**Demandes citées:**  
CoIP, IHC, WB

**Spécificité de l'espèce:**  
Humain, rat, souris

**Espèces citées:**  
Humain, souris

**Remarque-IHC: il est suggéré de démasquer l'antigène avec un tampon de TE buffer pH 9,0; (\*) À défaut, le démasquage de l'antigène peut être effectué avec un tampon citrate pH 6,0.**

**Contrôles positifs:**

WB : cellules HL-60, cellules HeLa, cellules Jurkat, tissu de thymus de rat, tissu de thymus de souris

IHC : tissu de lymphome humain,

## Informations générales

### Publications notables

Autrice	Pubmed ID	Journal	Application
Qiong Wu	32477006	Cancer Cell Int	WB,IHC
Ya Zhou	30013660	Oncol Lett	WB
Yingji Chen	35016691	Cancer Cell Int	WB

## Stockage

**Stockage:**

Stocker à -20°C. Stable pendant un an après l'expédition.

**Tampon de stockage:**

PBS avec azoture de sodium à 0,02 % et glycérol à 50 % pH 7,3

L'aliquotage n'est pas nécessaire pour le stockage à -20C

\*\*\* Les 20ul contiennent 0,1% de BSA.

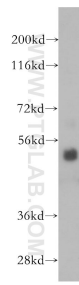
For technical support and original validation data for this product please contact:

T: 1 (888) 4PTGLAB (1-888-478-4522) (toll free in USA), or 1(312) 455-8498 (outside USA)

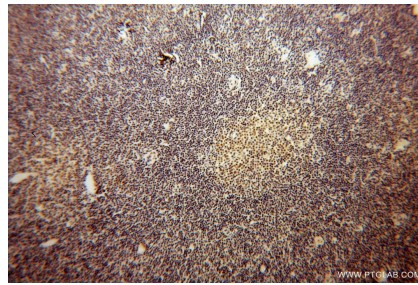
E: proteintech@ptglab.com  
W: ptglab.com

This product is exclusively available under Proteintech Group brand and is not available to purchase from any other manufacturer.

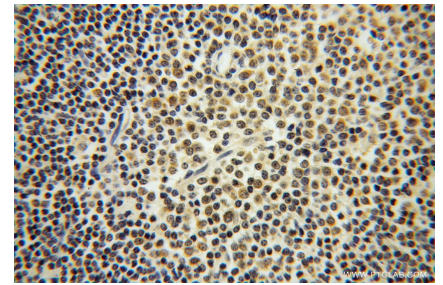
## Données de validation sélectionnées



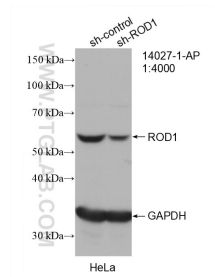
HL-60 cells were subjected to SDS PAGE followed by western blot with 14027-1-AP (ROD1 antibody) at dilution of 1:500 incubated at room temperature for 1.5 hours.



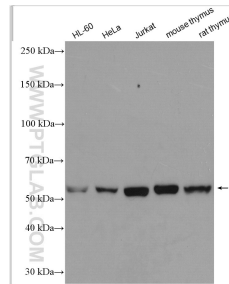
Immunohistochemical analysis of paraffin-embedded human lymphoma using 14027-1-AP (ROD1 antibody) at dilution of 1:100 (under 10x lens).



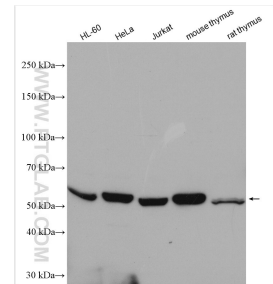
Immunohistochemical analysis of paraffin-embedded human lymphoma using 14027-1-AP (ROD1 antibody) at dilution of 1:100 (under 40x lens).



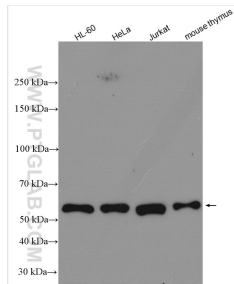
WB result of ROD1 antibody (14027-1-AP; 1:4000; incubated at room temperature for 1.5 hours) with sh-Control and sh-ROD1 transfected HeLa cells.



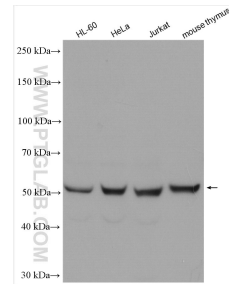
Various lysates were subjected to SDS PAGE followed by western blot with 14027-1-AP (ROD1 antibody) at dilution of 1:6000 incubated at room temperature for 1.5 hours.



Various lysates were subjected to SDS PAGE followed by western blot with 14027-1-AP (ROD1 antibody) at dilution of 1:6000 incubated at room temperature for 1.5 hours.



Various lysates subjected to SDS PAGE followed by western blot with 14027-1-AP (ROD1 antibody) at dilution of 1:6000 incubated at room temperature for 1.5 hours.



Various lysates were subjected to SDS PAGE followed by western blot with 14027-1-AP (ROD1 antibody) at dilution of 1:6000 incubated at room temperature for 1.5 hours.