

À des fins de recherche uniquement

Anticorps Polyclonal de lapin anti-FATP2



Numéro de catalogue: 14048-1-AP

Phare

30 Publications

Informations de base

Numéro de catalogue:

14048-1-AP

Taille:

150ul, Concentration: 500 µg/ml by Nanodrop;

Hôte:

Lapin

Isotype:

IgG

Immunogen Catalog Number:

AG5217

Numéro d'acquisition GenBank:

BC057770

Identification du gène (NCBI):

11001

Nom complet:

solute carrier family 27 (fatty acid transporter), member 2

MW calculé

567 aa, 65 kDa

MW observés:

70 kDa

Méthode de purification:

Purification par affinité contre l'antigène

Dilutions recommandées:

WB 1:2000-1:16000

IP 0.5-4.0 ug for IP and 1:500-1:1000 for WB

IHC 1:250-1:1000

IF 1:10-1:100

Applications

Applications testées:

IF, IHC, IP, WB, ELISA

Demandes citées:

CoIP, IF, IHC, WB

Spécificité de l'espèce:

Humain, rat, souris

Espèces citées:

Humain, rat, souris

Remarque-IHC: il est suggéré de démasquer l'antigène avec un tampon de TE buffer pH 9,0; (*) À défaut, le démasquage de l'antigène peut être effectué avec un tampon citrate pH 6,0.

Contrôles positifs:

WB : tissu rénal de souris, foie de rat, foie de souris, rein de rat, tissu hépatique de rat, tissu hépatique de souris

IP : cellules HepG2,

IHC : tissu de cancer du foie humain, tissu rénal humain

IF : cellules HepG2,

Informations générales

FATP2 is a member of the FATP family which functions in lipid and bile metabolism. It is a 70-kDa protein predominantly expressed in liver and kidney. Kidney FATP2 is localized exclusively to proximal tubule epithelial cells along the apical but not the basolateral membrane, and regulates lipoapoptosis. FATP2 is involved in metabolism-related diseases including nonalcoholic fatty liver disease (NAFLD) and type 2 diabetes mellitus (T2DM), and is a potential clinical biomarker and therapeutic target.

Publications notables

| Autrice | Pubmed ID | Journal | Application |
|------------|-----------|--------------------------------|-------------|
| Li-Sha Ran | 36115008 | J Nat Med | WB,IHC |
| Lili Cheng | 28871336 | Arch Toxicol | WB |
| Liping Luo | 36058506 | Cell Mol Gastroenterol Hepatol | WB |

Stockage

Stockage:

Stocker à -20°C. Stable pendant un an après l'expédition.

Tampon de stockage:

PBS avec azoture de sodium à 0,02 % et glycérol à 50 % pH 7,3

L'aliquotage n'est pas nécessaire pour le stockage à -20C

*** Les 20ul contiennent 0,1% de BSA.

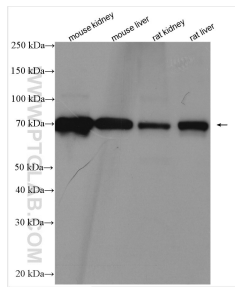
For technical support and original validation data for this product please contact:

T: 1 (888) 4PTGLAB (1-888-478-4522) (toll free in USA), or 1(312) 455-8498 (outside USA)

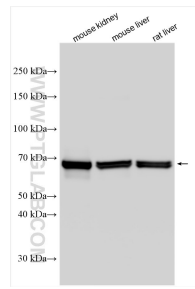
E: proteintech@ptglab.com
W: ptglab.com

This product is exclusively available under Proteintech Group brand and is not available to purchase from any other manufacturer.

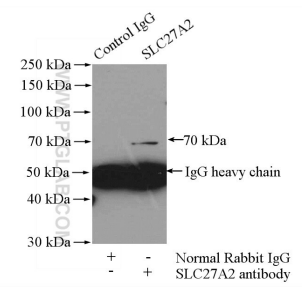
Données de validation sélectionnées



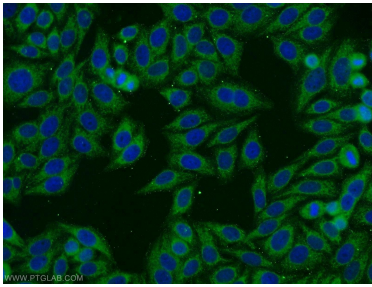
Various lysates were subjected to SDS PAGE followed by western blot with 14048-1-AP (FATP2 antibody) at dilution of 1:2000 incubated at room temperature for 1.5 hours.



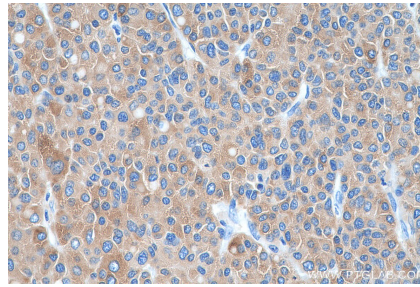
Various lysates were subjected to SDS PAGE followed by western blot with 14048-1-AP (FATP2 antibody) at dilution of 1:8000 incubated at room temperature for 1.5 hours.



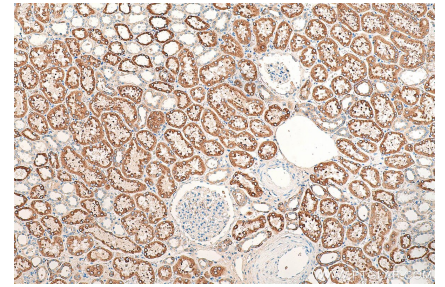
IP Result of anti-SLC27A2 (IP:14048-1-AP, 4ug; Detection:14048-1-AP 1:500) with HepG2 cells lysate 3200ug.



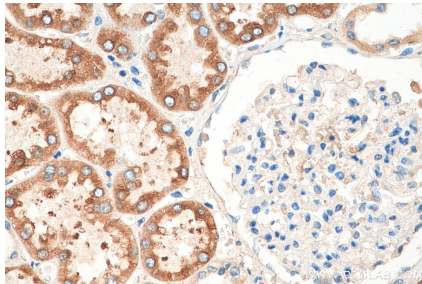
Immunofluorescent analysis of HepG2 cells using 14048-1-AP (SLC27A2 antibody) at dilution of 1:25 and Alexa Fluor 488-conjugated AffiniPure Goat Anti-Rabbit IgG(H+L).



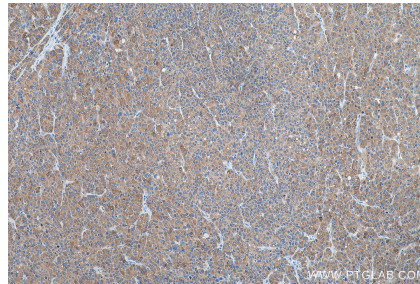
Immunohistochemical analysis of paraffin-embedded human liver cancer tissue slide using 14048-1-AP (FATP2 antibody) at dilution of 1:500 (under 40x lens). Heat mediated antigen retrieval with Tris-EDTA buffer (pH 9.0).



Immunohistochemical analysis of paraffin-embedded human kidney tissue slide using 14048-1-AP (FATP2 antibody) at dilution of 1:200 (under 10x lens). Heat mediated antigen retrieval with Tris-EDTA buffer (pH 9.0).



Immunohistochemical analysis of paraffin-embedded human kidney tissue slide using 14048-1-AP (FATP2 antibody) at dilution of 1:200 (under 40x lens). Heat mediated antigen retrieval with Tris-EDTA buffer (pH 9.0).



Immunohistochemical analysis of paraffin-embedded human liver cancer tissue slide using 14048-1-AP (FATP2 antibody) at dilution of 1:500 (under 10x lens). Heat mediated antigen retrieval with Tris-EDTA buffer (pH 9.0).