

À des fins de recherche uniquement

Anticorps Polyclonal de lapin anti-CDK6



Numéro de catalogue: 14052-1-AP

Phare

144 Publications

Informations de base

Numéro de catalogue:

14052-1-AP

Taille:

150ul, Concentration: 600 µg/ml by Nanodrop;

Hôte:

Lapin

Isotype:

IgG

Immunogen Catalog Number:

AG5275

Numéro d'acquisition GenBank:

BC027989

Identification du gène (NCBI):

1021

Nom complet:

cyclin-dependent kinase 6

MW calculé

326 aa, 36 kDa

MW observés:

36-40 kDa

Méthode de purification:

Purification par affinité contre l'antigène

Dilutions recommandées:

WB 1:1000-1:6000

IP 0.5-4.0 µg for IP and 1:500-1:2000 for WB

IHC 1:50-1:500

IF 1:50-1:500

Applications

Applications testées:

FC, IF, IHC, IP, WB, ELISA

Demandes citées:

CoIP, IF, IHC, WB

Spécificité de l'espèce:

Humain, rat, souris

Espèces citées:

Chèvre, Humain, poisson-zèbre, souris

Remarque-IHC: il est suggéré de démasquer l'antigène avec un tampon de TE buffer pH 9,0; (*) À défaut, le démasquage de l'antigène peut être effectué avec un tampon citrate pH 6,0.

Contrôles positifs:

WB : cellules HEK-293, cellules C2C12, cellules HeLa, cellules Jurkat, cellules K-562, cellules MOLT-4

IP : cellules Jurkat,

IHC : tissu de cancer du poumon humain, tissu de cancer de l'endomètre humain, tissu de carcinome urothélial humain, tissu testiculaire de rat

IF : cellules HeLa,

Informations générales

CDK6(Cyclin-dependent kinase 6) is involved in initiation and maintenance of cell cycle exit during cell differentiation and it prevents cell proliferation and regulates negatively cell differentiation, but is required for the proliferation of specific cell types. The molecular weight of CDK6 is 36-40 kDa (PMID: 23563707).

Publications notables

Autrice	Pubmed ID	Journal	Application
Xiaoman Chen	30207732	Mol Pharm	WB
He Cao	33046987	J Cancer	WB
Fang Li	36116238	Ecotoxicol Environ Saf	WB

Stockage

Stockage:

Stocker à -20°C. Stable pendant un an après l'expédition.

Tampon de stockage:

PBS avec azoture de sodium à 0,02 % et glycérol à 50 % pH 7,3

L'aliquotage n'est pas nécessaire pour le stockage à -20C

*** Les 20ul contiennent 0,1% de BSA.

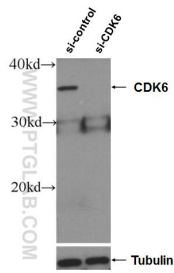
For technical support and original validation data for this product please contact:

T: 1 (888) 4PTGLAB (1-888-478-4522) (toll free in USA), or 1(312) 455-8498 (outside USA)

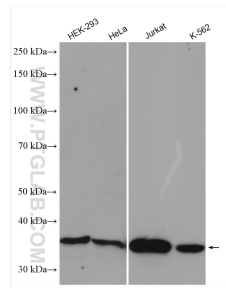
E: proteintech@ptglab.com
W: ptglab.com

This product is exclusively available under Proteintech Group brand and is not available to purchase from any other manufacturer.

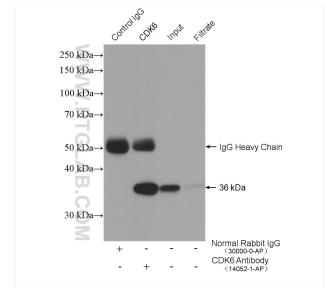
Données de validation sélectionnées



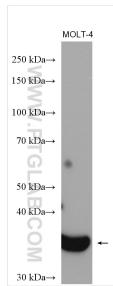
WB result of CDK6 antibody (14052-1-AP; 1:2000; incubated at room temperature for 1.5 hours) with sh-Control and sh-CDK6 transfected HeLa cells.



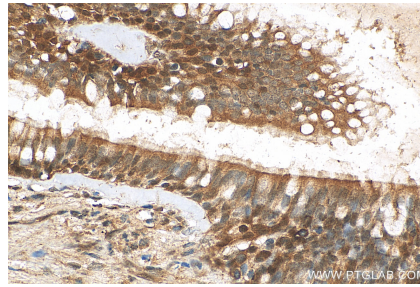
Various lysates were subjected to SDS PAGE followed by western blot with 14052-1-AP (CDK6 antibody) at dilution of 1:3000 incubated at room temperature for 1.5 hours.



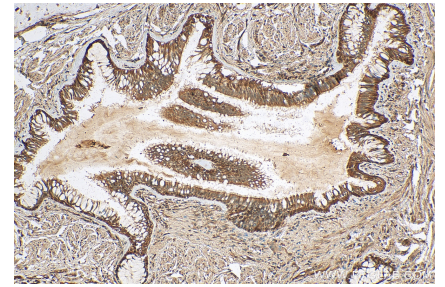
IP result of anti-CDK6 (IP:14052-1-AP, 4ug; Detection:14052-1-AP 1:1000) with Jurkat cells lysate 2880 ug.



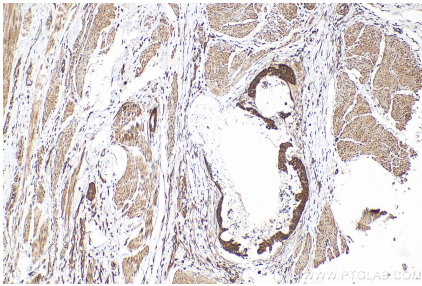
MOLT-4 cells were subjected to SDS PAGE followed by western blot with 14052-1-AP (CDK6 antibody) at dilution of 1:3000 incubated at room temperature for 1.5 hours.



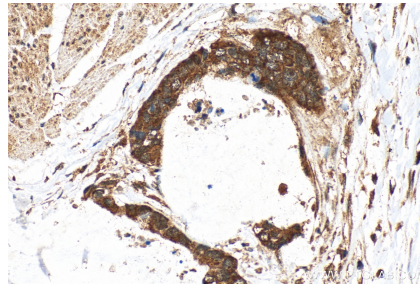
Immunohistochemical analysis of paraffin-embedded human lung cancer tissue slide using 14052-1-AP (CDK6 antibody) at dilution of 1:200 (under 40x lens). Heat mediated antigen retrieval with Tris-EDTA buffer (pH 9.0).



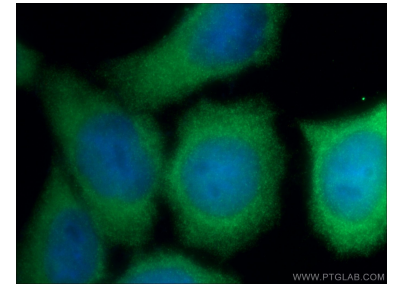
Immunohistochemical analysis of paraffin-embedded human lung cancer tissue slide using 14052-1-AP (CDK6 antibody) at dilution of 1:200 (under 10x lens). Heat mediated antigen retrieval with Tris-EDTA buffer (pH 9.0).



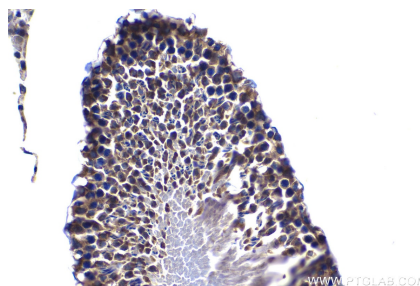
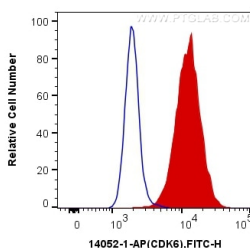
Immunohistochemical analysis of paraffin-embedded human urothelial carcinoma tissue slide using 14052-1-AP (CDK6 antibody) at dilution of 1:200 (under 10x lens). Heat mediated antigen retrieval with Tris-EDTA buffer (pH 9.0).



Immunohistochemical analysis of paraffin-embedded human urothelial carcinoma tissue slide using 14052-1-AP (CDK6 antibody) at dilution of 1:200 (under 40x lens). Heat mediated antigen retrieval with Tris-EDTA buffer (pH 9.0).



Immunofluorescent analysis of (-20°C Ethanol) fixed HeLa cells using 14052-1-AP (CDK6 antibody) at dilution of 1:50 and Alexa Fluor 488-conjugated AffiniPure Goat Anti-Rabbit IgG(H+L).



Immunohistochemical analysis of paraffin-embedded human urothelial carcinoma tissue slide using 14052-1-AP (CDK6 antibody) at dilution of 1:200 (under 40x lens). Heat mediated antigen retrieval with Tris-EDTA buffer (pH 9.0).

1X10⁶ HeLa cells were intracellularly stained with 0.4 ug Anti-Human CDK6 (14052-1-AP) and CoraLite®488-Conjugated AffiniPure Goat Anti-Rabbit IgG(H+L) at dilution 1:1000 (red), or 0.4 ug Control Antibody. Cells were fixed with 4% PFA and permeabilized with Flow Cytometry Perm Buffer (PF00011-C).

Immunohistochemical analysis of paraffin-embedded rat testis tissue slide using 14052-1-AP (CDK6 antibody) at dilution of 1:500 (under 40x lens). Heat mediated antigen retrieval with Tris-EDTA buffer (pH 9.0).