

À des fins de recherche uniquement

Anticorps Polyclonal de lapin anti-USP16



Numéro de catalogue: 14055-1-AP

Phare

4 Publications

Informations de base

Numéro de catalogue:

14055-1-AP

Taille:

150ul, Concentration: 400 µg/ml by Nanodrop;

Hôte:

Lapin

Isotype:

IgG

Immunogen Catalog Number:

AG4981

Numéro d'acquisition GenBank:

BC030777

Identification du gène (NCBI):

10600

Nom complet:

ubiquitin specific peptidase 16

MW calculé

94 kDa

MW observés:

100-120 kDa

Méthode de purification:

Purification par affinité contre l'antigène

Dilutions recommandées:

WB 1:500-1:2000

IP 0.5-4.0 µg for IP and 1:500-1:2000 for WB

IHC 1:50-1:500

Applications

Applications testées:

IHC, IP, WB, ELISA

Demandes citées:

CoIP, IF, IHC, WB

Spécificité de l'espèce:

Humain, rat, souris

Espèces citées:

Humain, souris

Contrôles positifs:

WB : cellules HeLa, cellules K-562

IP : cellules HeLa,

IHC : tissu hépatique humain, tissu cardiaque humain, tissu cérébral humain, tissu cutané humain, tissu ovarien humain, tissu rénal humain, tissu splénique humain, tissu testiculaire humain

Remarque-IHC: il est suggéré de démasquer l'antigène avec un tampon de TE buffer pH 9,0; (*) À défaut, le démasquage de l'antigène peut être effectué avec un tampon citrate pH 6,0.

Informations générales

USP16 (Ubiquitin specific peptidase 16) is originally identified as a DUB of histone H2A which is implicated in cell cycle progression and HOXD10 gene expression (PMID:17914355). Knock out study has reported that depletion of USP16 results in early embryonic lethality in mice (PMID:24784029). Moreover, USP16 mediated deubiquitination and stabilization of Drp1 through its direct interaction with Drp1 (PMID:37488647).

Publications notables

Autrice	Pubmed ID	Journal	Application
Christine Galant	30608617	Rheumatology (Oxford)	IHC
Nadine Sen Nkwe	34005181	J Cell Sci	WB,IF
Nadine Sen Nkwe	32005696	J Cell Sci	WB,IF

Stockage

Stockage:

Stocker à -20°C. Stable pendant un an après l'expédition.

Tampon de stockage:

PBS avec azoture de sodium à 0,02 % et glycérol à 50 % pH 7,3

L'aliquotage n'est pas nécessaire pour le stockage à -20C

*** Les 20ul contiennent 0,1% de BSA.

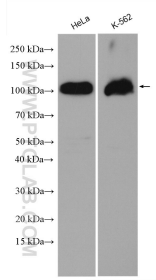
For technical support and original validation data for this product please contact:

T: 1 (888) 4PTGLAB (1-888-478-4522) (toll free in USA), or 1(312) 455-8498 (outside USA)

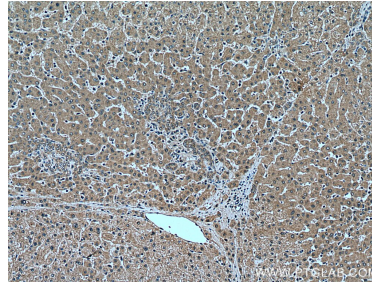
E: proteintech@ptglab.com
W: ptglab.com

This product is exclusively available under Proteintech Group brand and is not available to purchase from any other manufacturer.

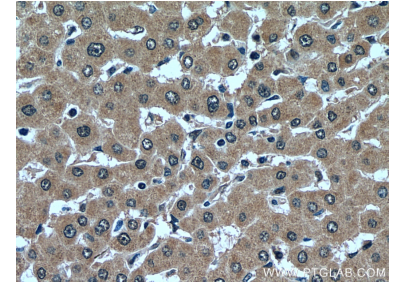
Données de validation sélectionnées



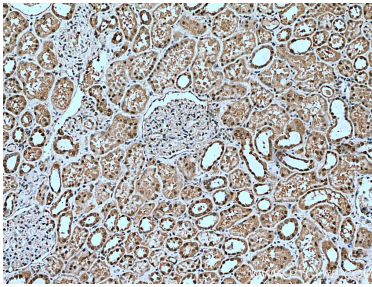
Various lysates were subjected to SDS PAGE followed by western blot with 14055-1-AP (USP16 antibody) at dilution of 1:1000 incubated at room temperature for 1.5 hours.



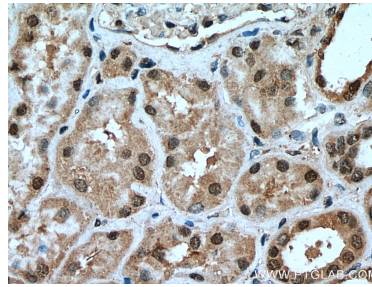
Immunohistochemical analysis of paraffin-embedded human liver tissue slide using 14055-1-AP (USP16 antibody) at dilution of 1:200 (under 10x lens). Heat mediated antigen retrieval with Tris-EDTA buffer (pH 9.0).



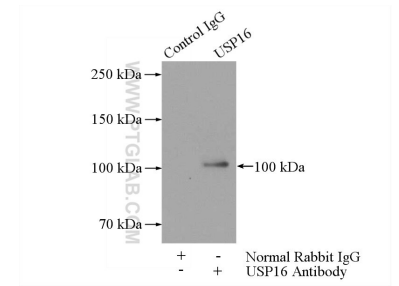
Immunohistochemical analysis of paraffin-embedded human liver tissue slide using 14055-1-AP (USP16 antibody) at dilution of 1:200 (under 40x lens). Heat mediated antigen retrieval with Tris-EDTA buffer (pH 9.0).



Immunohistochemical analysis of paraffin-embedded human kidney tissue slide using 14055-1-AP (USP16 antibody) at dilution of 1:200 (under 10x lens). Heat mediated antigen retrieval with Tris-EDTA buffer (pH 9.0).



Immunohistochemical analysis of paraffin-embedded human kidney tissue slide using 14055-1-AP (USP16 antibody) at dilution of 1:200 (under 40x lens). Heat mediated antigen retrieval with Tris-EDTA buffer (pH 9.0).



IP Result of anti-USP16 (IP:14055-1-AP, 5ug; Detection:14055-1-AP 1:1000) with HeLa cells lysate 880ug.