

À des fins de recherche uniquement

# Anticorps Polyclonal de lapin anti-SETD8



Numéro de catalogue: 14063-1-AP

Phare

22 Publications

## Informations de base

<b>Numéro de catalogue:</b> 14063-1-AP	<b>Numéro d'acquisition GenBank:</b> BC050346	<b>Méthode de purification:</b> Purification par affinité contre l'antigène
<b>Taille:</b> 150ul, Concentration: 900 µg/ml by Nanodrop;	<b>Identification du gène (NCBI):</b> 387893	<b>Dilutions recommandées:</b> WB 1:1000-1:4000 IHC 1:50-1:500
<b>Hôte:</b> Lapin	<b>Nom complet:</b> SET domain containing (lysine methyltransferase) 8	
<b>Isotype:</b> IgG	<b>MW calculé:</b> 43 kDa	
<b>Immunogen Catalog Number:</b> AG5114	<b>MW observés:</b> 43 kDa	

## Applications

### Applications testées:

IHC, WB, ELISA

### Demandes citées:

ChIP, CoIP, IF, IHC, IP, WB

### Spécificité de l'espèce:

Humain, souris

### Espèces citées:

Humain, rat, souris

### Contrôles positifs:

WB : cellules HeLa, cellules A549, cellules HepG2, cellules NIH/3T3, cellules RAW 264.7

IHC : tissu de cancer du sein humain,

**Remarque-IHC: il est suggéré de démasquer l'antigène avec un tampon de TE buffer pH 9,0; (\*) À défaut, le démasquage de l'antigène peut être effectué avec un tampon citrate pH 6,0.**

## Informations générales

SETD8, also known as Set8, PR-Set7, or KMT5A, is a member of the SET domain family of histone lysine methyltransferases and, to date, the only known enzyme that catalyzes monomethylation of H4K20 in eukaryotes, which is involved in DNA damage response, mitotic condensation, and DNA replication. SETD8 is overexpressed in various types of tumors, such as bladder cancer, non-small cell lung carcinoma, and small cell lung carcinoma, and is associated with a shorter survival time for gastric, esophageal, and prostate cancer patients.

## Publications notables

Autrice	Pubmed ID	Journal	Application
Xuefang Shen	33028948	Exp Mol Med	WB,IHC IF
Lihong Lu	34803485	Int J Biol Sci	WB,IHC,IF,CoIP
Mengqi Liu	34599596	Acta Biochim Biophys Sin (Shanghai)	WB,IHC

## Stockage

### Stockage:

Stocker à -20°C. Stable pendant un an après l'expédition.

### Tampon de stockage:

PBS avec azoture de sodium à 0,02 % et glycérol à 50 % pH 7,3

L'aliquotage n'est pas nécessaire pour le stockage à -20C

**\*\*\* Les 20ul contiennent 0,1% de BSA.**

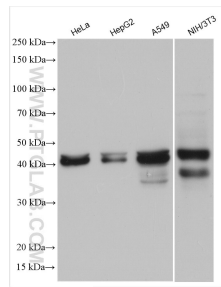
For technical support and original validation data for this product please contact:

T: 1 (888) 4PTGLAB (1-888-478-4522) (toll free in USA), or 1(312) 455-8498 (outside USA)

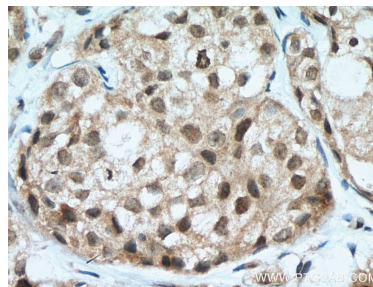
E: proteintech@ptglab.com  
W: ptglab.com

**This product is exclusively available under Proteintech Group brand and is not available to purchase from any other manufacturer.**

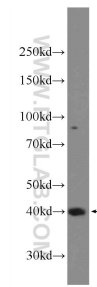
## Données de validation sélectionnées



Various lysates were subjected to SDS PAGE followed by western blot with 14063-1-AP (SETD8 antibody) at dilution of 1:2000 incubated at room temperature for 1.5 hours.



Immunohistochemical analysis of paraffin-embedded human breast cancer tissue slide using 14063-1-AP (SETD8 antibody) at dilution of 1:200 (under 40x lens). Heat mediated antigen retrieval with Tris-EDTA buffer (pH 9.0).



RAW 264.7 cells were subjected to SDS PAGE followed by western blot with 14063-1-AP (SETD8 Antibody) at dilution of 1:600 incubated at room temperature for 1.5 hours.