

À des fins de recherche uniquement

Anticorps Polyclonal de lapin anti-INTS5



Numéro de catalogue: 14069-1-AP

5 Publications

Informations de base

Numéro de catalogue:
14069-1-AP

Taille:
150ul, Concentration: 400 µg/ml by Nanodrop and 287 µg/ml by Bradford method using BSA as the standard;

Hôte:
Lapin

Isotype:
IgG

Immunogen Catalog Number:
AG5129

Numéro d'acquisition GenBank:
BC060841

Identification du gène (NCBI):
80789

Nom complet:
integrator complex subunit 5

MW calculé
108 kDa

MW observés:
108 kDa

Méthode de purification:
Purification par affinité contre l'antigène

Dilutions recommandées:
WB 1:1000-1:6000
IP 0.5-4.0 ug for IP and 1:500-1:2000 for WB
IHC 1:50-1:500
IF 1:20-1:200

Applications

Applications testées:
IF, IHC, IP, WB, ELISA

Demandes citées:
WB

Spécificité de l'espèce:
Humain, rat, souris

Espèces citées:
Humain, souris

Remarque-IHC: il est suggéré de démasquer l'antigène avec un tampon de TE buffer pH 9.0; (*) A défaut, 'le démasquage de l'antigène peut être effectué avec un tampon citrate pH 6,0.

Contrôles positifs:

WB : cellules HeLa, cellules NIH/3T3, cellules SKOV-3, tissu cérébral humain

IP : cellules HeLa,

IHC : tissu de cancer de la prostate humain,

IF : cellules HeLa,

Informations générales

INTS5, also named as INT5 and KIAA1698, is a component of the Integrator complex which involved in the small nuclear RNAs (snRNA) U1 and U2 transcription and in their 3'-box-dependent processing. The Integrator complex is associated with the C-terminal domain (CTD) of RNA polymerase II largest subunit (POLR2A) and is recruited to the U1 and U2 snRNAs genes.

Publications notables

Autrice	Pubmed ID	Journal	Application
Hai Zheng	33243860	Science	WB
Lauren G. Mascibroda	36229431	Nat Commun	WB
Xinxin Wang	35476980	Cell Rep	WB

Stockage

Stockage:

Stocker à -20°C. Stable pendant un an après l'expédition.

Tampon de stockage:

PBS avec azoture de sodium à 0,02 % et glycérol à 50 % pH 7,3

L'aliquotage n'est pas nécessaire pour le stockage à -20C

*** Les 20ul contiennent 0,1% de BSA.

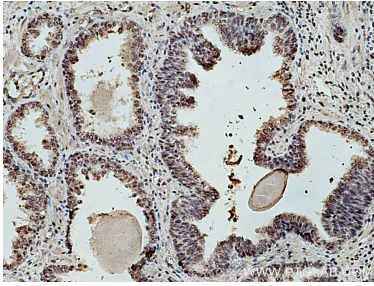
For technical support and original validation data for this product please contact:

T: 1 (888) 4PTGLAB (1-888-478-4522) (toll free in USA), or 1(312) 455-8498 (outside USA)

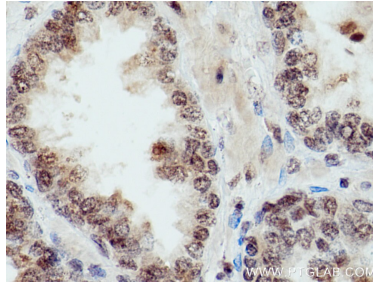
E: proteintech@ptglab.com
W: ptglab.com

This product is exclusively available under Proteintech Group brand and is not available to purchase from any other manufacturer.

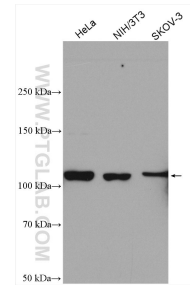
Données de validation sélectionnées



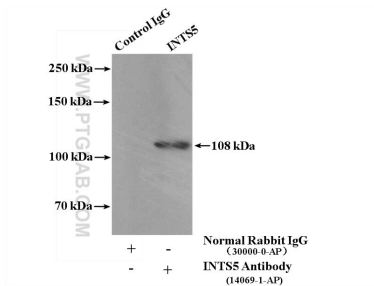
Immunohistochemical analysis of paraffin-embedded human prostate cancer tissue slide using 14069-1-AP (INTS5 antibody) at dilution of 1:200 (under 10x lens). Heat mediated antigen retrieval with Tris-EDTA buffer (pH 9.0).



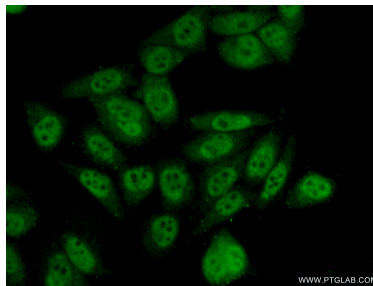
Immunohistochemical analysis of paraffin-embedded human prostate cancer tissue slide using 14069-1-AP (INTS5 antibody) at dilution of 1:200 (under 40x lens). Heat mediated antigen retrieval with Tris-EDTA buffer (pH 9.0).



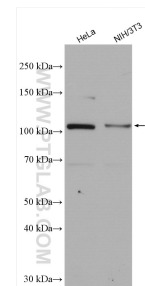
Various lysates were subjected to SDS PAGE followed by western blot with 14069-1-AP (INTS5 antibody) at dilution of 1:3000 incubated at room temperature for 1.5 hours.



IP Result of anti-INTS5 (IP:14069-1-AP, 4ug; Detection:14069-1-AP 1:1000) with HeLa cells lysate 2000ug.



Immunofluorescent analysis of (10% Formaldehyde) fixed HeLa cells using 14069-1-AP (INTS5 antibody) at dilution of 1:50 and Alexa Fluor 488-conjugated AffiniPure Goat Anti-Rabbit IgG(H+L).



Various lysates were subjected to SDS PAGE followed by western blot with 14069-1-AP (INTS5 antibody) at dilution of 1:2000 incubated at room temperature for 1.5 hours.