

À des fins de recherche uniquement

Anticorps Polyclonal de lapin anti-SRPK1



Numéro de catalogue: 14073-1-AP

4 Publications

Informations de base

Numéro de catalogue:

14073-1-AP

Taille:

150ul, Concentration: 500 µg/ml by Nanodrop and 267 µg/ml by Bradford method using BSA as the standard;

Hôte:

Lapin

Isotype:

IgG

Immunogen Catalog Number:

AG5149

Numéro d'acquisition GenBank:

BC038292

Identification du gène (NCBI):

6732

Nom complet:

SFRS protein kinase 1

MW calculé

92.4 kDa

MW observés:

72-95 kDa

Méthode de purification:

Purification par affinité contre l'antigène

Dilutions recommandées:

WB 1:500-1:3000

IP 0.5-4.0 ug par IP and 1:500-1:1000 for WB

IHC 1:20-1:200

IF 1:10-1:100

Applications

Applications testées:

FC, IF, IHC, IP, WB, ELISA

Demandes citées:

CoIP, IF, WB

Spécificité de l'espèce:

Humain, souris

Espèces citées:

Humain, souris

Contrôles positifs:

WB : cellules HeLa, cellules Jurkat, cellules L02, tissu testiculaire de souris

IP : tissu testiculaire de souris,

IHC : tissu de cancer du sein humain, tissu testiculaire humain

IF : cellules SH-SY5Y,

Remarque-IHC: il est suggéré de démasquer l'antigène avec un tampon de TE buffer pH 9.0; (*) A défaut, 'le démasquage de l'antigène peut être 'effectué avec un tampon citrate pH 6,0.

Informations générales

SRPK1 (serine-arginine protein kinase 1) is a protein kinase that specifically phosphorylates proteins containing serine-arginine-rich domains. Its substrates include a family of SR proteins that are key regulators of mRNA AS (alternative splicing). SRPK1 may be localized both in the cytoplasm and nucleus and translocates between these compartments under various conditions (e.g. cell cycle and stress). It is able to phosphorylate SR proteins both in cytoplasm and nucleus (the significance of which remains incompletely understood) and thus regulate the activity of these proteins by affecting their ability to bind other proteins and/or RNA as well as their intracellular localization.(PMID:22817743). This protein has 2 isoforms produced by alternative splicing.

Publications notables

Autrice	Pubmed ID	Journal	Application
Yufeng Li	34614409	Cell Metab	WB,CoIP
Guanghai Hu	32194790	J Cancer	WB
Li Wang	29503206	Cell Chem Biol	WB

Stockage

Stockage:

Stocker à -20°C. Stable pendant un an après l'expédition.

Tampon de stockage:

PBS avec azoture de sodium à 0,02 % et glycérol à 50 % pH 7,3

L'aliquotage n'est pas nécessaire pour le stockage à -20C

*** Les 20ul contiennent 0,1% de BSA.

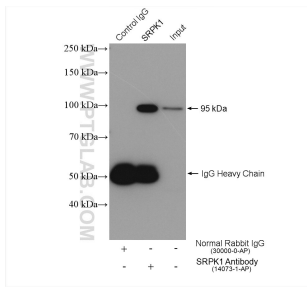
For technical support and original validation data for this product please contact:

T: 1 (888) 4PTGLAB (1-888-478-4522) (toll free in USA), or 1(312) 455-8498 (outside USA)

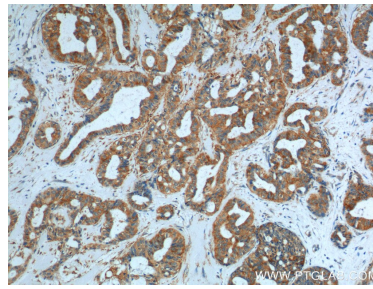
E: proteintech@ptglab.com
W: ptglab.com

This product is exclusively available under Proteintech Group brand and is not available to purchase from any other manufacturer.

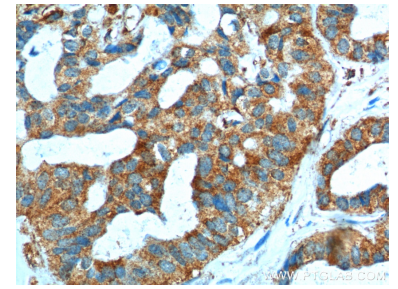
Données de validation sélectionnées



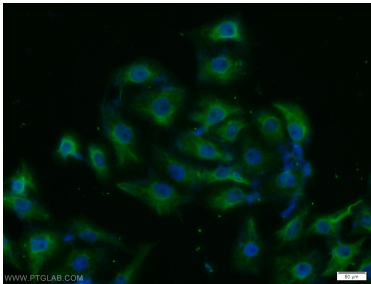
IP result of anti-SRPK1(IP:14073-1-AP, 4ug;
Detection:14073-1-AP 1:500) with mouse testis
tissue lysate 2040 ug.



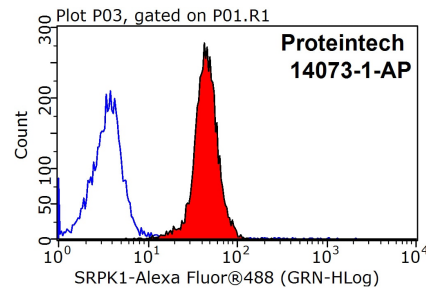
Immunohistochemical analysis of paraffin-
embedded human breast cancer tissue slide using
14073-1-AP (SRPK1 Antibody) at dilution of 1:200
(under 10x lens).



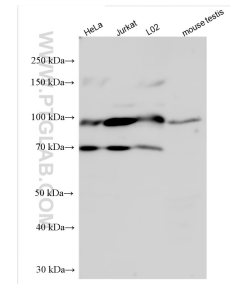
Immunohistochemical analysis of paraffin-
embedded human breast cancer tissue slide using
14073-1-AP (SRPK1 Antibody) at dilution of 1:200
(under 40x lens).



Immunofluorescent analysis of SH-SY5Y cells using
14073-1-AP (SRPK1 antibody) at dilution of 1:25
and Alexa Fluor 488-conjugated AffiniPure Goat
Anti-Rabbit IgG(H+L).



1X10⁶ MCF-7 cells were stained with 0.2ug SRPK1
antibody (14073-1-AP, red) and control antibody
(blue). Fixed with 90% MeOH blocked with 3% BSA
(30 min). Alexa Fluor 488-conjugated AffiniPure
Goat Anti-Rabbit IgG(H+L) with dilution 1:1500.



HeLa cells were subjected to SDS PAGE followed by
western blot with 14073-1-AP (SRPK1 antibody) at
dilution of 1:1500 incubated at room temperature
for 1.5 hours.