

À des fins de recherche uniquement

Anticorps Polyclonal de lapin anti- ASPH



Numéro de catalogue: 14116-1-AP

Phare

4 Publications

Informations de base

Numéro de catalogue:

14116-1-AP

Taille:

150ul, Concentration: 900 µg/ml by Nanodrop and 467 µg/ml by Bradford method using BSA as the standard;

Hôte:

Lapin

Isotype:

IgG

Immunogen Catalog Number:

AG5265

Numéro d'acquisition GenBank:

BC066929

Identification du gène (NCBI):

444

Nom complet:

aspartate beta-hydroxylase

MW calculé

86 kDa

MW observés:

26 kDa

Méthode de purification:

Purification par affinité contre l'antigène

Dilutions recommandées:

WB 1:200-1:1000

IHC 1:50-1:500

Applications

Applications testées:

IHC, WB, ELISA

Demandes citées:

IHC, WB

Spécificité de l'espèce:

Humain, souris

Espèces citées:

Humain, rat

Remarque-IHC: il est suggéré de démasquer l'antigène avec un tampon de TE buffer pH 9,0; (*) A défaut, 'le démasquage de l'antigène peut être 'effectué avec un tampon citrate pH 6,0.

Contrôles positifs:

WB : tissu cérébral de souris, cellules A549, tissu cérébral humain

IHC : tissu rénal humain,

Informations générales

Aspartate-β-hydroxylase (ASPH; termed AAH in older literature) has been implicated in the cross-talk among all of these signaling pathways. Correspondingly, ASPH is expressed at high levels in many malignant neoplasms of different histogeneses. It has the 86-141 kDa bands (native and phosphorylated forms), cleavage products of 35-56 and 22-26 kDa. (PMID:27981247/PMID: 10956665)

Publications notables

Autrice	Pubmed ID	Journal	Application
Yujiao Zhou	30116759	J Immunol Res	WB
Michael Babich	35252607	Heliyon	WB, IHC
Hongwu Meng	36758707	Biochem Pharmacol	WB

Stockage

Stockage:

Stocker à -20°C. Stable pendant un an après l'expédition.

Tampon de stockage:

PBS avec azoture de sodium à 0,02 % et glycérol à 50 % pH 7,3

L'aliquotage n'est pas nécessaire pour le stockage à -20C

***** Les 20ul contiennent 0,1% de BSA.**

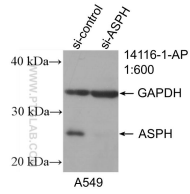
For technical support and original validation data for this product please contact:

T: 1 (888) 4PTGLAB (1-888-478-4522) (toll free in USA), or 1(312) 455-8498 (outside USA)

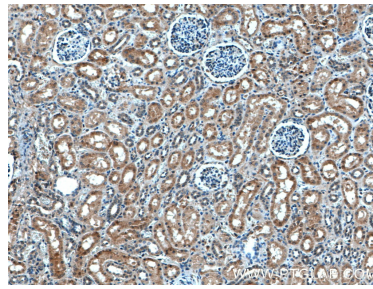
E: proteintech@ptglab.com
W: ptglab.com

This product is exclusively available under Proteintech Group brand and is not available to purchase from any other manufacturer.

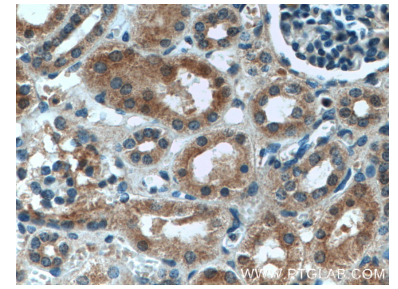
Données de validation sélectionnées



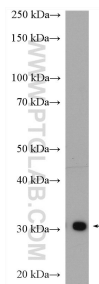
WB result of ASPH antibody (14116-1-AP; 1:600; incubated at room temperature for 1.5 hours) with sh-Control and sh-ASPH transfected A549 cells.



Immunohistochemical analysis of paraffin-embedded human kidney tissue slide using 14116-1-AP (ASPH antibody) at dilution of 1:200 (under 10x lens). Heat mediated antigen retrieval with Tris-EDTA buffer (pH 9.0).



Immunohistochemical analysis of paraffin-embedded human kidney tissue slide using 14116-1-AP (ASPH antibody) at dilution of 1:200 (under 40x lens). Heat mediated antigen retrieval with Tris-EDTA buffer (pH 9.0).



mouse brain tissue were subjected to SDS PAGE followed by western blot with 14116-1-AP (ASPH antibody) at dilution of 1:300 incubated at room temperature for 1.5 hours.