

À des fins de recherche uniquement

# Anticorps Polyclonal de lapin anti-TPPII



Numéro de catalogue: 14120-1-AP

Phare

5 Publications

## Informations de base

Numéro de catalogue:

14120-1-AP

Taille:

150ul, Concentration: 500 µg/ml by Nanodrop and 300 µg/ml by Bradford method using BSA as the standard;

Hôte:

Lapin

Isotype:

IgG

Immunogen Catalog Number:

AG5296

Numéro d'acquisition GenBank:

BC039905

Identification du gène (NCBI):

7174

Nom complet:

tripeptidyl peptidase II

MW calculé

1249 aa, 138 kDa

MW observés:

135-140 kDa

Méthode de purification:

Purification par affinité contre l'antigène

Dilutions recommandées:

WB 1:500-1:2000

IP 0.5-4.0 ug for IP and 1:500-1:1000 for WB

IHC 1:50-1:500

IF 1:20-1:200

## Applications

Applications testées:

FC, IF, IHC, IP, WB, ELISA

Demandes citées:

IF, WB

Spécificité de l'espèce:

Humain

Espèces citées:

Humain

**Remarque-IHC: il est suggéré de démasquer l'antigène avec un tampon de TE buffer pH 9,0; (\*) A défaut, 'le démasquage de l'antigène peut être 'effectué avec un tampon citrate pH 6,0.**

Contrôles positifs:

WB : cellules Jurkat, Jurkat

IP : cellules Jurkat,

IHC : tissu de gliome humain,

IF : cellules HepG2,

## Informations générales

TPPII (Tripeptidyl-peptidase 2) is an evolutionary conserved serine peptidase of the subtilisin family that removes tripeptides from the free NH<sub>2</sub> terminus of oligopeptides. The 138-kDa TPP2 polypeptide forms large oligomeric complexes of >1,000 kDa that are detected in the cytoplasm of all cell types. In addition, a membrane associated TPP 2 isoform is present in most cells (PMID:15735022).

## Publications notables

Autrice	Pubmed ID	Journal	Application
Stefan Duensing	21647238	Genes Cancer	WB, IF
Chia-Li Liao	35466366	J Cell Sci	WB
Jarmila Nahálková	26169984	Mol Cell Biochem	IF

## Stockage

Stockage:

Stocker à -20°C. Stable pendant un an après l'expédition.

Tampon de stockage:

PBS avec azoture de sodium à 0,02 % et glycérol à 50 % pH 7,3

L'aliquotage n'est pas nécessaire pour le stockage à -20C

**\*\*\* Les 20ul contiennent 0,1% de BSA.**

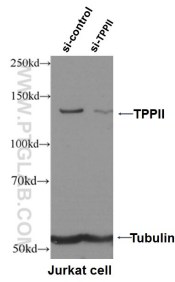
For technical support and original validation data for this product please contact:

T: 1 (888) 4PTGLAB (1-888-478-4522) (toll free in USA), or 1(312) 455-8498 (outside USA)

E: proteintech@ptglab.com  
W: ptglab.com

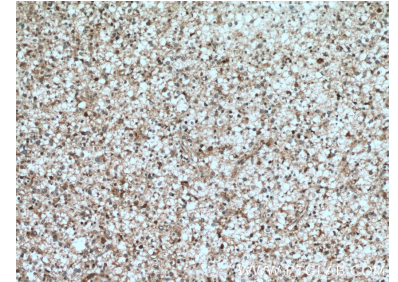
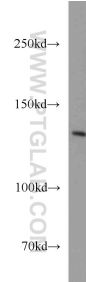
**This product is exclusively available under Proteintech Group brand and is not available to purchase from any other manufacturer.**

## Données de validation sélectionnées

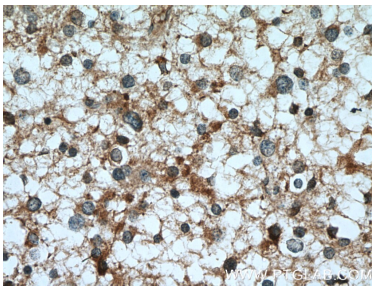


WB result of TPPII antibody (14120-1-AP, 1:1000) with si-control and si-TPPII transfected Jurkat cells.

Jurkat cells were subjected to SDS PAGE followed by western blot with 14120-1-AP (TPPII antibody) at dilution of 1:1000 incubated at room temperature for 1.5 hours.



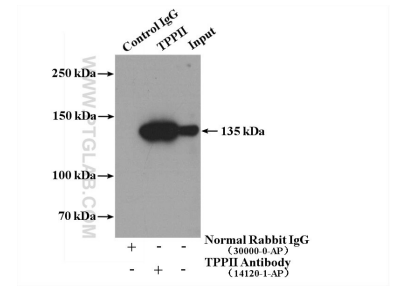
Immunohistochemical analysis of paraffin-embedded human gliomas tissue slide using 14120-1-AP (TPPII antibody) at dilution of 1:200 (under 10x lens. Heat mediated antigen retrieval with Tris-EDTA buffer (pH 9.0).



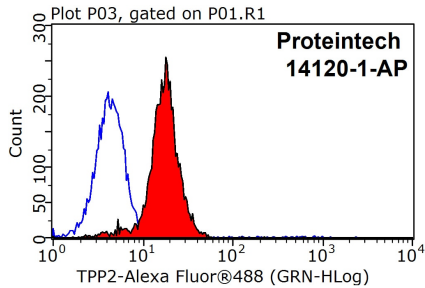
Immunohistochemical analysis of paraffin-embedded human gliomas tissue slide using 14120-1-AP (TPPII antibody) at dilution of 1:200 (under 40x lens. Heat mediated antigen retrieval with Tris-EDTA buffer (pH 9.0).



Immunofluorescent analysis of HepG2 cells, using TPP2 antibody 14120-1-AP at 1:50 dilution and Rhodamine-labeled goat anti-rabbit IgG (red). Blue pseudocolor = DAPI (fluorescent DNA dye).



IP Result of anti-TPPII (IP:14120-1-AP, 4ug; Detection:66017-1-Ig, 1:500) with Jurkat cells lysate 2400ug.



1X10<sup>6</sup> HepG2 cells were stained with 0.2ug TPPII antibody (14120-1-AP, red) and control antibody (blue). Fixed with 90% MeOH blocked with 3% BSA (30 min). Alexa Fluor 488-conjugated AffiniPure Goat Anti-Rabbit IgG(H+L) with dilution 1:1500.