

À des fins de recherche uniquement

Anticorps Polyclonal de lapin anti-RPS3A



Numéro de catalogue: 14123-1-AP

Phare

7 Publications

Informations de base

Numéro de catalogue:
14123-1-AP

Taille:
150ul, Concentration: 350 µg/ml by Nanodrop and 267 µg/ml by Bradford method using BSA as the standard;

Hôte:
Lapin

Isotype:
IgG

Immunogen Catalog Number:
AG5273

Numéro d'acquisition GenBank:
BC066926

Identification du gène (NCBI):
6189

Nom complet:
ribosomal protein S3A

MW calculé
30 kDa

MW observés:
35 kDa

Méthode de purification:
Purification par affinité contre l'antigène

Dilutions recommandées:
WB 1:1000-1:8000
IP 0.5-4.0 ug for IP and 1:500-1:1000 for WB
IHC 1:20-1:200

Applications

Applications testées:
FC, IHC, IP, WB, ELISA

Demandes citées:
IF, IHC, WB

Spécificité de l'espèce:
Humain, rat, souris

Espèces citées:
Humain, souris, xénope

Remarque-IHC: il est suggéré de démasquer l'antigène avec un tampon de TE buffer pH 9,0; (*) A défaut, 'le démasquage de l'antigène peut être 'effectué avec un tampon citrate pH 6,0.

Contrôles positifs:

WB : cellules HeLa, cellules A431, cellules A549, cellules HepG2, cellules Jurkat, cellules Raji

IP : cellules HepG2,

IHC : tissu de cancer du pancréas humain,

Informations générales

RPS3a, a component of the ribosomal small subunit (40S), is a member of the A20 family of the deubiquitinating cysteine proteases. RPS3a is an inducing factor for oncogenic cellular transformation of Rat-1 cells by v-fos, and is highly expressed in most tumors including hepatocellular carcinoma and other cancers. On the other hand, RPS3a has also been described as a regulator of apoptosis and transcription factors

Publications notables

Autrice	Pubmed ID	Journal	Application
Sipeng Li	34265469	Mol Cell Proteomics	WB
Jean-Michel Cioni	30612743	Cell	IF
Yan Tang	30131868	Cell Discov	WB,IHC,IF

Stockage

Stockage:

Stocker à -20°C. Stable pendant un an après l'expédition.

Tampon de stockage:

PBS avec azoture de sodium à 0,02 % et glycérol à 50 % pH 7,3

L'aliquotage n'est pas nécessaire pour le stockage à -20C

*** Les 20ul contiennent 0,1% de BSA.

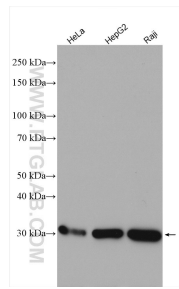
For technical support and original validation data for this product please contact:

T: 1 (888) 4PTGLAB (1-888-478-4522) (toll free in USA), or 1(312) 455-8498 (outside USA)

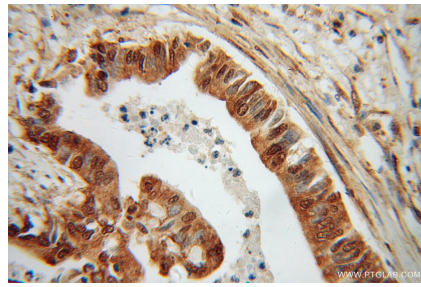
E: proteintech@ptglab.com
W: ptglab.com

This product is exclusively available under Proteintech Group brand and is not available to purchase from any other manufacturer.

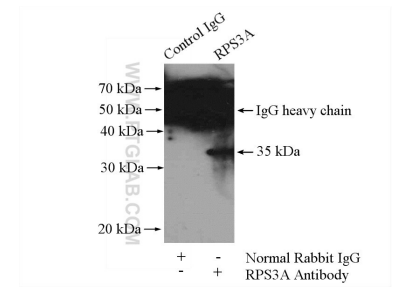
Données de validation sélectionnées



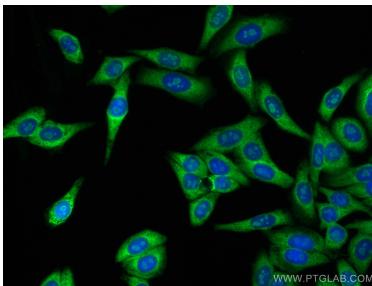
Various lysates were subjected to SDS PAGE followed by western blot with 14123-1-AP (RPS3A antibody) at dilution of 1:4000 incubated at room temperature for 1.5 hours.



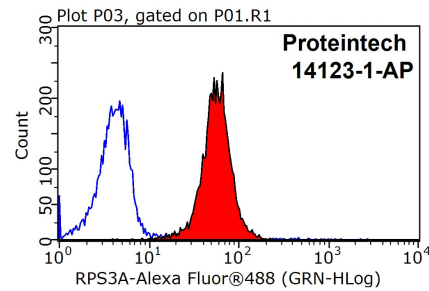
Immunohistochemical analysis of paraffin-embedded human pancreas cancer using 14123-1-AP (RPS3A antibody) at dilution of 1:100 (under 40x lens).



IP Result of anti-RPS3A (IP:14123-1-AP, 4ug; Detection:14123-1-AP 1:500) with HepG2 cells lysate 3600ug.



Immunofluorescent analysis of (4% PFA) fixed HepG2 cells using RPS3A antibody (14123-1-AP) at dilution of 1:200 and CoraLite@488-Conjugated AffiniPure Goat Anti-Rabbit IgG(H+L).



1X10⁶ HepG2 cells were stained with 0.2ug RPS3A antibody (14123-1-AP, red) and control antibody (blue). Fixed with 90% MeOH blocked with 3% BSA (30 min). Alexa Fluor 488-conjugated AffiniPure Goat Anti-Rabbit IgG(H+L) with dilution 1:1500.