

À des fins de recherche uniquement

Anticorps Polyclonal de lapin anti-MARCKSL1



Numéro de catalogue: 14124-1-AP

Informations de base

| | | |
|--|--|--|
| Numéro de catalogue: 14124-1-AP | Numéro d'acquisition GenBank: BC066915 | Méthode de purification: Purification par affinité contre l'antigène |
| Taille: 150ul , Concentration: 750 µg/ml by Nanodrop and 360 µg/ml by Bradford method using BSA as the standard; | Identification du gène (NCBI): 65108 | Dilutions recommandées: WB 1:500-1:1000 |
| Hôte: Lapin | Nom complet: MARCKS-like 1 | |
| Isotype: IgG | MW calculé: 20 kDa | |
| Immunogen Catalog Number: AG5274 | MW observés: 48 kDa | |

Applications

| | |
|---|---|
| Applications testées: WB, ELISA | Contrôles positifs: WB : tissu cérébral humain fœtal, tissu cérébral humain |
| Spécificité de l'espèce: Humain | |

Informations générales

MARCKS-like protein 1 (MARCKSL1) is widely expressed in nervous tissue, it is also named MARCKS-like protein (MLP) or MARCKS-related protein (MRP) and belongs to the MARCKS family, which is a highly acidic myristoylated family of PKC substrates widely distributed in diverse cell types including macrophages. The protein has a calculated molecular weight of 20 kDa and an apparent molecular weight of 42-48 kDa due to anomalous migration on SDS gels or phosphorylation. Genetic disruption of MARCKSL1 results in neural tube closure defects, events that depend on coordinated control of actin functions, cell shape, and cell migration. MARCKSL1 are thought to regulate the actin cytoskeleton and thereby participate in major cellular responses such as phagocytosis, secretion, motility, mitogenesis, and membrane trafficking.

Stockage

Stockage:
Stocker à -20°C. Stable pendant un an après l'expédition.
Tampon de stockage:
PBS avec azoture de sodium à 0,02 % et glycérol à 50 % pH 7,3
L'aliquotage n'est pas nécessaire pour le stockage à -20C

*** Les 20ul contiennent 0,1% de BSA.

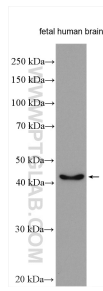
For technical support and original validation data for this product please contact:

T: 1 (888) 4PTGLAB (1-888-478-4522) (toll free in USA), or 1(312) 455-8498 (outside USA)

E: proteintech@ptglab.com
W: ptglab.com

This product is exclusively available under Proteintech Group brand and is not available to purchase from any other manufacturer.

Données de validation sélectionnées



Fetal human brain tissue were subjected to SDS PAGE followed by western blot with 14124-1-AP (MARC SL1 antibody) at dilution of 1:800 incubated at room temperature for 1.5 hours.