

À des fins de recherche uniquement

# Anticorps Polyclonal de lapin anti-CHST15



Numéro de catalogue: 14131-1-AP

## Informations de base

<b>Numéro de catalogue:</b> 14131-1-AP	<b>Numéro d'acquisition GenBank:</b> BC027908	<b>Méthode de purification:</b> Purification par affinité contre l'antigène
<b>Taille:</b> 150ul , Concentration: 350 µg/ml by Nanodrop and 367 µg/ml by Bradford method using BSA as the standard;	<b>Identification du gène (NCBI):</b> 51363	<b>Dilutions recommandées:</b> WB 1:500-1:3000
<b>Hôte:</b> Lapin	<b>Nom complet:</b> carbohydate (N-acetylgalactosamine 4-sulfate 6-O) sulfotransferase 15	
<b>Isotype:</b> IgG	<b>MW calculé</b> 65 kDa	
<b>Immunogen Catalog Number:</b> AG5258	<b>MW observés:</b> 55-58 kDa, 65-69 kDa	

## Applications

<b>Applications testées:</b> WB, ELISA	<b>Contrôles positifs:</b> WB : tissu cérébral de souris,
<b>Spécificité de l'espèce:</b> Humain, souris	

## Informations générales

Carbohydrate sulfotransferase 15, also known as CHST15, BRAG, GALNAC4S6ST and KIAA0598, is a single-pass type II membrane protein which belongs to the sulfotransferase 1 family. CHST15 is a sulfotransferase that transfers sulfate from 3'-phosphoadenosine 5'-phosphosulfate (PAPS) to the C-6 hydroxyl group of the GalNAc 4-sulfate residue of chondroitin sulfate A and forms chondroitin sulfate E containing GlcA-GalNAc(4,6-SO<sub>4</sub>) repeating units. It also transfers sulfate to a unique non-reducing terminal sequence, GalNAc(4SO<sub>4</sub>)-GlcA(2SO<sub>4</sub>)-GalNAc(6SO<sub>4</sub>), to yield a highly sulfated structure similar to the structure found in thrombomodulin chondroitin sulfate. CHST15 may also act as a B-cell receptor involved in BCR ligation-mediated early activation that mediate regulatory signals key to B-cell development and / or regulation of B-cell-specific RAG expression. CHST15 is expressed in B-cell-enriched tissues but not in fetal or adult thymus. It is expressed in fetal and adult spleen, lymph node, tonsil, bone marrow and peripheral leukocytes. It can be detected as 49 kDa and 69 kDa.

## Stockage

**Stockage:**  
Stocker à -20°C. Stable pendant un an après l'expédition.  
**Tampon de stockage:**  
PBS avec azoture de sodium à 0,02 % et glycérol à 50 % pH 7,3  
L'aliquotage n'est pas nécessaire pour le stockage à -20C

\*\*\* Les 20ul contiennent 0,1% de BSA.

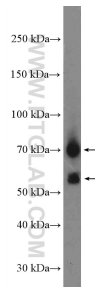
For technical support and original validation data for this product please contact:

T: 1 (888) 4PTGLAB (1-888-478-4522) (toll free in USA), or 1(312) 455-8498 (outside USA)

E: [proteintech@ptglab.com](mailto:proteintech@ptglab.com)  
W: [ptglab.com](http://ptglab.com)

This product is exclusively available under Proteintech Group brand and is not available to purchase from any other manufacturer.

## Données de validation sélectionnées



mouse brain tissue were subjected to SDS PAGE followed by western blot with 14131-1-AP (CHST15 Antibody) at dilution of 1:1500 incubated at room temperature for 1.5 hours.