

À des fins de recherche uniquement

# Anticorps Polyclonal de lapin anti-ADAM12



Numéro de catalogue: 14139-1-AP

Phare

39 Publications

## Informations de base

Numéro de catalogue:

14139-1-AP

Taille:

150ul, Concentration: 600 µg/ml by Nanodrop;

Hôte:

Lapin

Isotype:

IgG

Immunogen Catalog Number:

AG5206

Numéro d'acquisition GenBank:

BC060804

Identification du gène (NCBI):

8038

Nom complet:

ADAM metallopeptidase domain 12

MW calculé

100 kDa

MW observés:

90-100 kDa, 70-80 kDa

Méthode de purification:

Purification par affinité contre l'antigène

Dilutions recommandées:

WB 1:500-1:2000

IP 0.5-4.0 ug for IP and 1:200-1:1000 for WB

IHC 1:250-1:1000

IF 1:50-1:500

## Applications

Applications testées:

FC, IF, IHC, IP, WB, ELISA

Demandes citées:

FC, IF, IHC, IP, WB

Spécificité de l'espèce:

Humain, rat, souris

Espèces citées:

Humain, rat, souris

Contrôles positifs:

WB : tissu cérébral de souris, cellules HeLa, cellules MCF-7, tissu cardiaque de souris, tissu cérébral de rat

IP : cellules HeLa,

IHC : tissu placentaire humain, tissu de cancer du sein humain

IF : cellules HepG2,

**Remarque-IHC: il est suggéré de démasquer l'antigène avec un tampon de TE buffer pH 9,0; (\*) À défaut, 'le démasquage de l'antigène peut être effectué avec un tampon citrate pH 6,0.**

## Informations générales

ADAM12, also named as MLTN and Meltrin-alpha, is involved in skeletal muscle regeneration, specifically at the onset of cell fusion. It is also involved in macrophage-derived giant cells (MGC) and osteoclast formation from mononuclear precursors. ADAM12 is expressed in human malignant tumors (PMID:17355265). ADAM12's ability to degrade extracellular matrix components likely allows it to detach cancer cells from the basement membrane and assist them on their route to metastasis. But the protein's role not just as a biomarker of breast cancer but as a gateway to cancer cell migration is only now being understood. ADAM12 has 2 isoforms with the calculated molecular mass of 100 and 80 kDa, and this antibody can recognize all isoforms of ADAM12. ADAM12 has 4 forms: 120kDa full-length form, 90kd mature (processed form that lack the prodomain), 50-68kDa degradation product and 27kDa prodomain.

## Publications notables

Autrice	Pubmed ID	Journal	Application
Michal Sobbecki	36113462	Cell Stem Cell	IF
Zhuo Zhang	33030286	FEBS Open Bio	WB
Michelle Van Sinderen	26616664	Reprod Fertil Dev	

## Stockage

Stockage:

Stocker à -20°C. Stable pendant un an après l'expédition.

Tampon de stockage:

PBS avec azoture de sodium à 0,02 % et glycérol à 50 % pH 7,3

L'aliquotage n'est pas nécessaire pour le stockage à -20C

\*\*\* Les 20ul contiennent 0,1% de BSA.

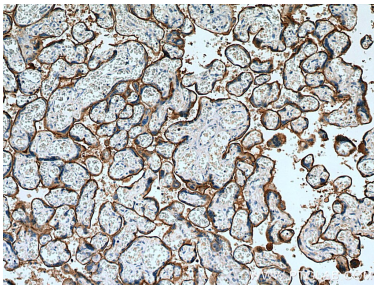
For technical support and original validation data for this product please contact:

T: 1 (888) 4PTGLAB (1-888-478-4522) (toll free in USA), or 1(312) 455-8498 (outside USA)

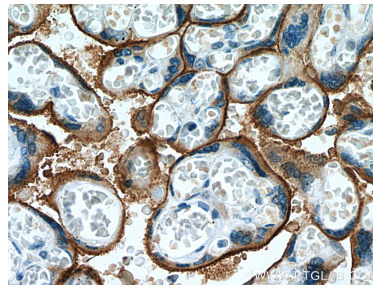
E: proteintech@ptglab.com  
W: ptglab.com

This product is exclusively available under Proteintech Group brand and is not available to purchase from any other manufacturer.

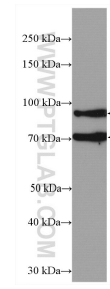
## Données de validation sélectionnées



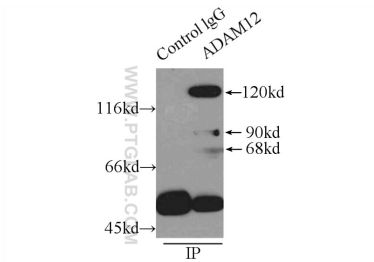
Immunohistochemical analysis of paraffin-embedded human placenta tissue slide using 14139-1-AP (ADAM12 antibody) at dilution of 1:500 (under 10x lens). Heat mediated antigen retrieval with Tris-EDTA buffer (pH 9.0).



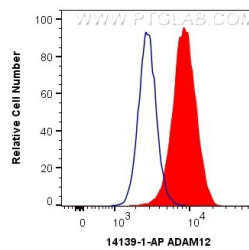
Immunohistochemical analysis of paraffin-embedded human placenta tissue slide using 14139-1-AP (ADAM12 antibody) at dilution of 1:500 (under 40x lens). Heat mediated antigen retrieval with Tris-EDTA buffer (pH 9.0).



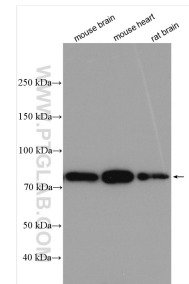
mouse brain tissue were subjected to SDS PAGE followed by western blot with 14139-1-AP (ADAM12 antibody) at dilution of 1:1000 incubated at room temperature for 1.5 hours.



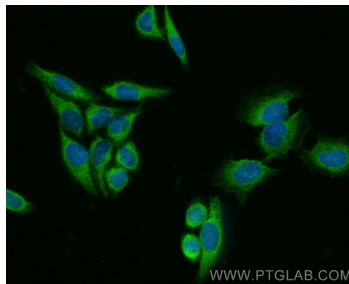
IP Result of anti-ADAM12 (IP:14139-1-AP, 4ug; Detection:14139-1-AP 1:300) with HeLa cells lysate 4650ug.



1x10<sup>6</sup> HeLa cells were intracellularly stained with 0.4 ug Anti-Human ADAM12 (14139-1-AP) and CoraLite®488-Conjugated AffiniPure Goat Anti-Rabbit IgG(H+L) at dilution 1:1000 (red), or 0.4 ug Control Antibody. Cells were fixed with 4% PFA and permeabilized with Flow Cytometry Perm Buffer (PF00011-C).



Various lysates were subjected to SDS PAGE followed by western blot with 14139-1-AP (ADAM12 antibody) at dilution of 1:1000 incubated at room temperature for 1.5 hours.



Immunofluorescent analysis of (-20°C Methanol) fixed HepG2 cells using ADAM12 antibody (14139-1-AP) at dilution of 1:100 and CoraLite®488-Conjugated AffiniPure Goat Anti-Rabbit IgG(H+L).