

À des fins de recherche uniquement

Anticorps Polyclonal de lapin anti-KRAP/SSFA2



Numéro de catalogue: 14157-1-AP

Phare

5 Publications

Informations de base

Numéro de catalogue:

14157-1-AP

Taille:

150ul, Concentration: 800 µg/ml by Nanodrop;

Hôte:

Lapin

Isotype:

IgG

Immunogen Catalog Number:

AG5339

Numéro d'acquisition GenBank:

BC028706

Identification du gène (NCBI):

6744

Nom complet:

sperm specific antigen 2

MW calculé

138 kDa

MW observés:

180 kDa

Méthode de purification:

Purification par affinité contre l'antigène

Dilutions recommandées:

WB 1:500-1:1000

IP 0.5-4.0 ug for IP and 1:500-1:1000 for WB

IF 1:200-1:800

Applications

Applications testées:

IF, IP, WB, ELISA

Demandes citées:

CoIP, IF, IHC, WB

Spécificité de l'espèce:

Humain, rat, souris

Espèces citées:

canin, Humain

Contrôles positifs:

WB : tissu pulmonaire de souris, tissu pulmonaire de rat, tissu testiculaire de souris

IP : tissu testiculaire de souris,

IF : tissu pancréatique de souris,

Informations générales

KRAP (Ki-ras-induced actin-interacting protein), also known as SSFA2, CS1 or SPAG13, is a 1,259 amino acid cytoplasmic protein associated with filamentous-actin (F-actin). KRAP is strongly expressed in pancreas and testis. It is also present in colon cancer cell lines, and the expression is up-regulated by activated K-Ras. KRAP-deficient (KO) mice display decreased adiposity and improved glucose metabolism, implicating KRAP as a potential target for the prevention or treatment of obesity and related diseases. KRAP has also been suggested to be a potential target for cancer. This antibody recognizes endogenous KRAP, which migrates with an apparent molecular mass of 180 kDa in SDS-PAGE. (PMID: 14673706; 21501587; 21873152)

Publications notables

Autrice	Pubmed ID	Journal	Application
Dingli Florent F	22946050	J Cell Sci	WB, IF
Akiko Okayama	26947549	J Proteomics	WB, IHC
Nagendra Babu Thillaiappan	34301929	Nat Commun	WB, IHC

Stockage

Stockage:

Stocker à -20°C. Stable pendant un an après l'expédition.

Tampon de stockage:

PBS avec azoture de sodium à 0,02 % et glycérol à 50 % pH 7,3

L'aliquotage n'est pas nécessaire pour le stockage à -20C

*** Les 20ul contiennent 0,1% de BSA.

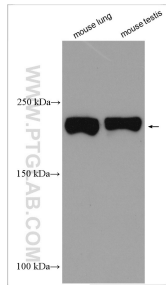
For technical support and original validation data for this product please contact:

T: 1 (888) 4PTGLAB (1-888-478-4522) (toll free in USA), or 1(312) 455-8498 (outside USA)

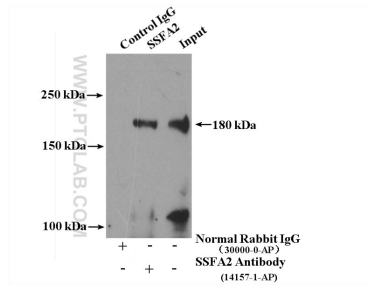
E: proteintech@ptglab.com
W: ptglab.com

This product is exclusively available under Proteintech Group brand and is not available to purchase from any other manufacturer.

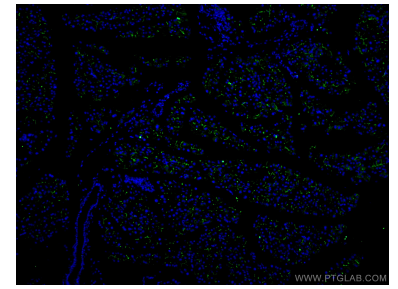
Données de validation sélectionnées



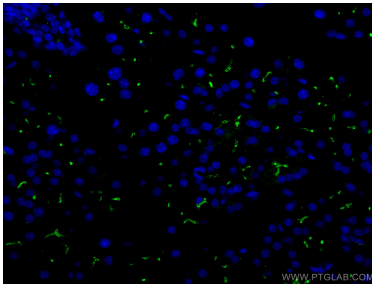
Various lysates were subjected to SDS PAGE followed by western blot with 14157-1-AP (KRAP/SSFA2 antibody) at dilution of 1:600 incubated at room temperature for 1.5 hours.



IP Result of anti-KRAP, SSFA2 (IP:14157-1-AP, 4ug; Detection:14157-1-AP 1:500) with mouse testis tissue lysate 4000ug.



Immunofluorescent analysis of (4% PFA) fixed mouse pancreas tissue using KRAP/SSFA2 antibody (14157-1-AP) at dilution of 1:400 and CoraLite®488-Conjugated AffiniPure Goat Anti-Rabbit IgG(H+L).



Immunofluorescent analysis of (4% PFA) fixed mouse pancreas tissue using KRAP/SSFA2 antibody (14157-1-AP) at dilution of 1:400 and CoraLite®488-Conjugated AffiniPure Goat Anti-Rabbit IgG(H+L).