

À des fins de recherche uniquement

Anticorps Polyclonal de lapin anti-Liprin Alpha 1



Numéro de catalogue: 14175-1-AP

Phare

25 Publications

Informations de base

Numéro de catalogue:
14175-1-AP

Taille:
150ul, Concentration: 500 µg/ml by Nanodrop and 293 µg/ml by Bradford method using BSA as the standard;

Hôte:
Lapin

Isotype:
IgG

Immunogen Catalog Number:
AG5381

Numéro d'acquisition GenBank:
BC034046

Identification du gène (NCBI):
8500

Nom complet:
protein tyrosine phosphatase, receptor type, f polypeptide (PTPRF), interacting protein (liprin), alpha 1

MW calculé
1202 aa, 136 kDa

MW observés:
160 kDa

Méthode de purification:
Purification par affinité contre l'antigène

Dilutions recommandées:
WB 1:500-1:1000
IP 0.5-4.0 ug for IP and 1:500-1:1000 for WB
IHC 1:50-1:500
IF 1:20-1:200

Applications

Applications testées:
FC, IF, IHC, IP, WB, ELISA

Demandes citées:
IF, IHC, WB

Spécificité de l'espèce:
Humain, rat, souris

Espèces citées:
Humain, singe, souris

Remarque-IHC: il est suggéré de démasquer l'antigène avec un tampon de TE buffer pH 9,0; (*) A défaut, le démasquage de l'antigène peut être effectué avec un tampon citrate pH 6,0.

Contrôles positifs:

WB : cellules HeLa, cellules MCF-7

IP : cellules MCF-7,

IHC : tissu de cancer de la prostate humain,

IF : cellules HepG2,

Informations générales

Liprin alpha 1, encoded by the PPF1A1 gene, is a member of the LAR protein-tyrosine phosphatase-interacting protein (liprin) family. Liprins interact with members of LAR family of transmembrane protein tyrosine phosphatases, which are known to be important for axon guidance and mammary gland development. Liprin alpha 1 may regulate the disassembly of focal adhesions and thus help orchestrate cell-matrix interactions (PMID: 7796809). Alternatively spliced transcript variants encoding distinct isoforms have been described.

Publications notables

| Autrice | Pubmed ID | Journal | Application |
|-----------------|-----------|-------------|-------------|
| Marta Ripamonti | 36171301 | Commun Biol | WB,IF |
| Veronica Astro | 27659488 | Sci Rep | WB,IF |
| Kristyna Sala | 31537859 | Sci Rep | IF |

Stockage

Stockage:

Stocker à -20°C. Stable pendant un an après l'expédition.

Tampon de stockage:

PBS avec azoture de sodium à 0,02 % et glycérol à 50 % pH 7,3

L'aliquotage n'est pas nécessaire pour le stockage à -20C

*** Les 20ul contiennent 0,1% de BSA.

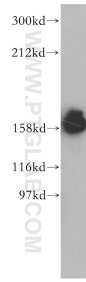
For technical support and original validation data for this product please contact:

T: 1 (888) 4PTGLAB (1-888-478-4522) (toll free in USA), or 1(312) 455-8498 (outside USA)

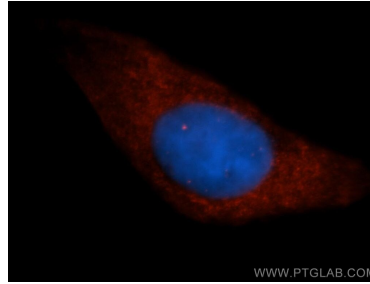
E: proteintech@ptglab.com
W: ptglab.com

This product is exclusively available under Proteintech Group brand and is not available to purchase from any other manufacturer.

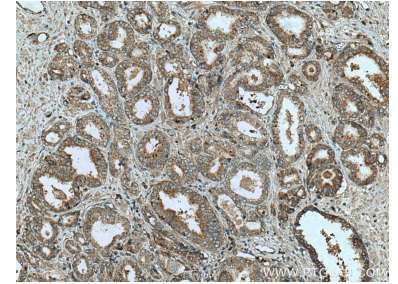
Données de validation sélectionnées



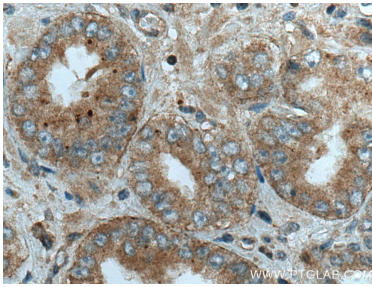
HeLa cells were subjected to SDS PAGE followed by western blot with 14175-1-AP (Liprin alpha 1 antibody) at dilution of 1:500 incubated at room temperature for 1.5 hours.



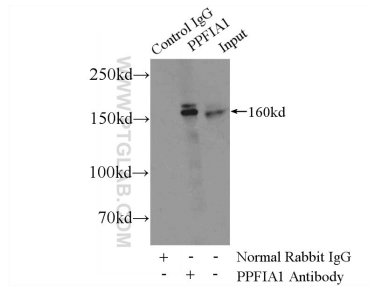
Immunofluorescent analysis of HepG2 cells, using PPFIA1 antibody 14175-1-AP at 1:50 dilution and Rhodamine-labeled goat anti-rabbit IgG (red). Blue pseudocolor = DAPI (fluorescent DNA dye).



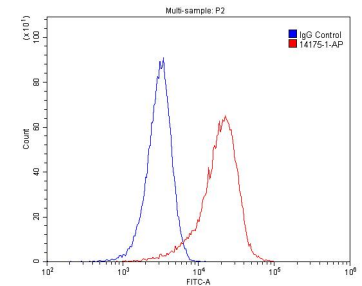
Immunohistochemical analysis of paraffin-embedded human prostate cancer tissue slide using 14175-1-AP (Liprin alpha 1 antibody) at dilution of 1:200 (under 10x lens). Heat mediated antigen retrieval with Tris-EDTA buffer (pH 9.0).



Immunohistochemical analysis of paraffin-embedded human prostate cancer tissue slide using 14175-1-AP (Liprin alpha 1 antibody) at dilution of 1:200 (under 40x lens). Heat mediated antigen retrieval with Tris-EDTA buffer (pH 9.0).



IP Result of anti-Liprin alpha 1 (IP:14175-1-AP, 4ug; Detection:14175-1-AP 1:500) with MCF-7 cells lysate 3200ug.



1×10^6 HeLa cells were stained with 0.2ug Liprin alpha 1 antibody (14175-1-AP, red) and control antibody (blue). Cells were fixed with 4% PFA and permeabilized with 0.1% Triton X-100. Alexa Fluor 488-conjugated AffiniPure Goat Anti-Rabbit IgG(H+L) with dilution 1:1500.